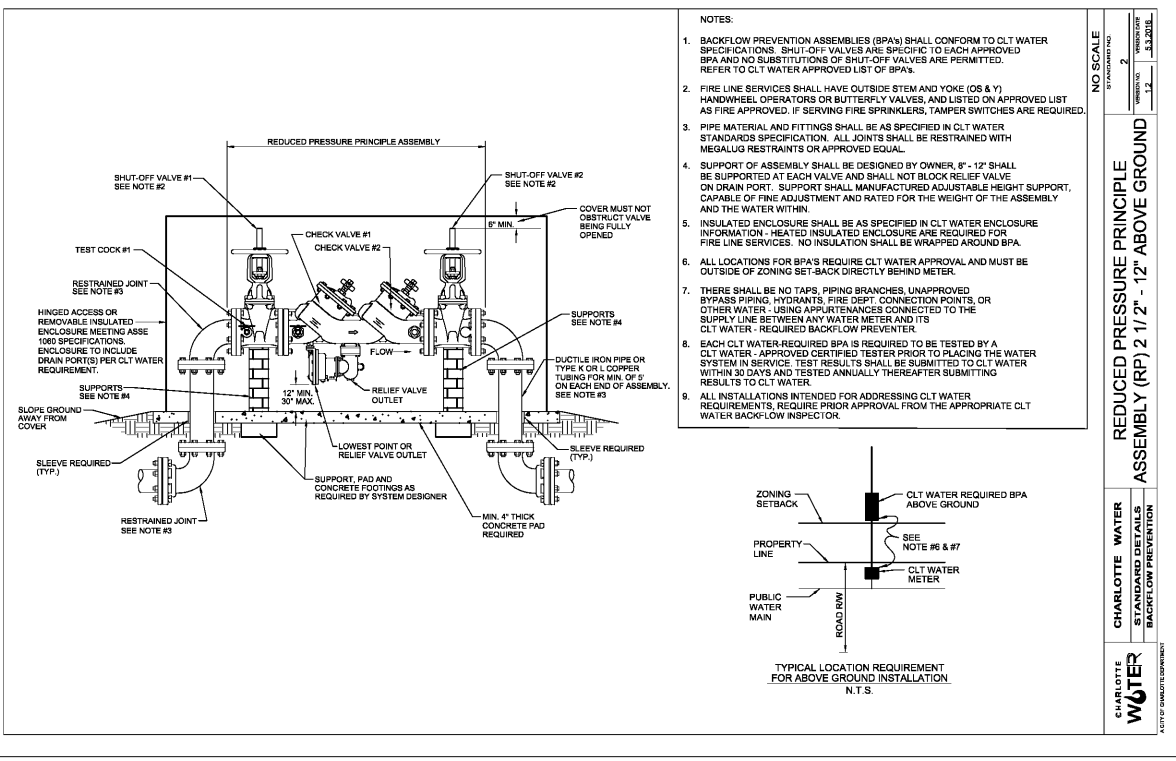
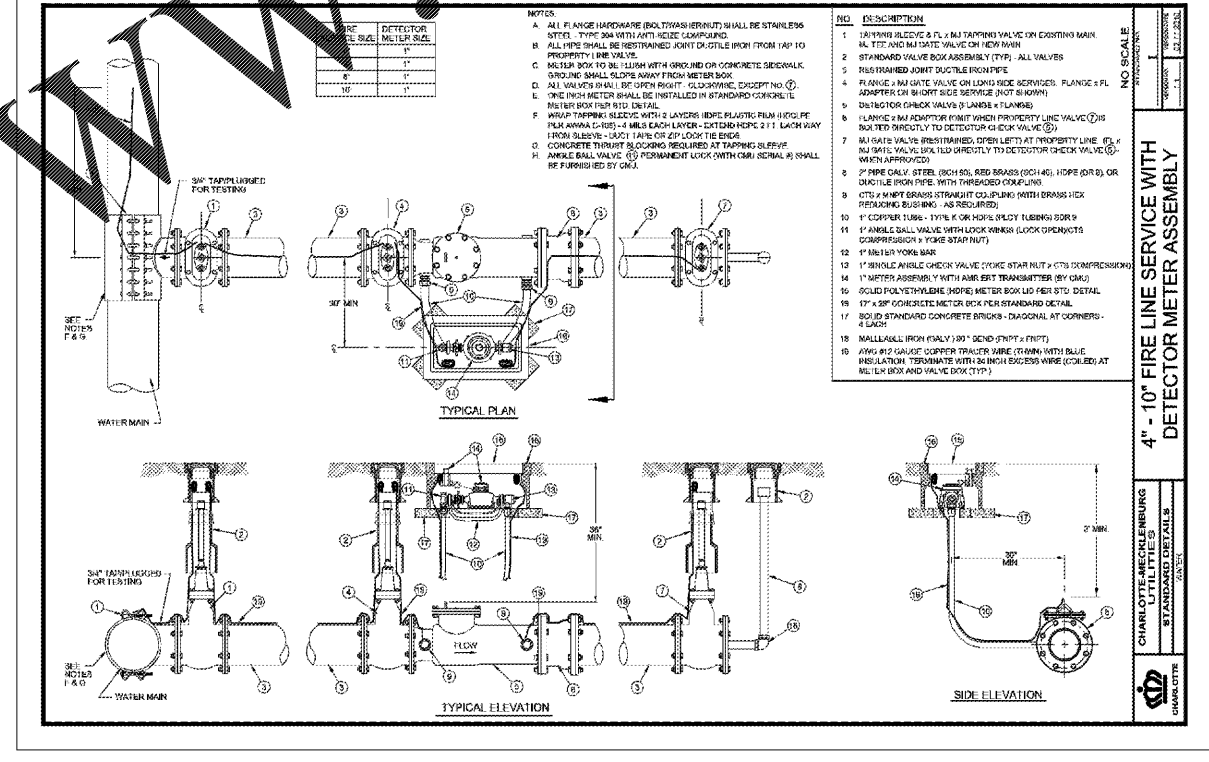
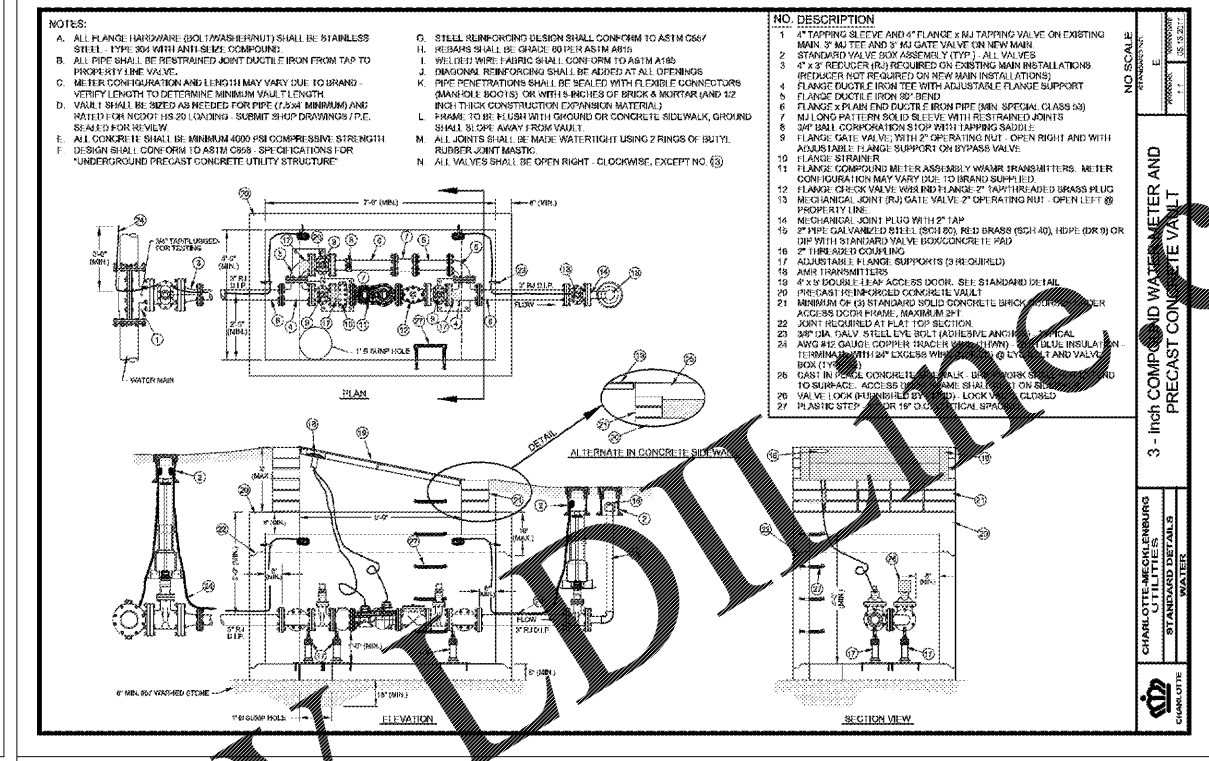


Order Plans @

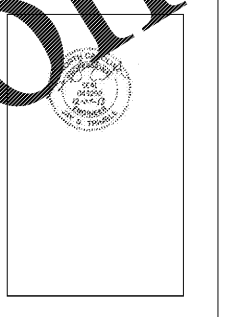


- NOTES:
- BACKFLOW PREVENTION ASSEMBLIES (BPAs) SHALL CONFORM TO CLT WATER SPECIFICATIONS. SHUT-OFF VALVES ARE SPECIFIC TO EACH APPROVED BPA AND NO SUBSTITUTIONS OF SHUT-OFF VALVES ARE PERMITTED. REFER TO CLT WATER APPROVED LIST OF BPAs.
 - FIRE LINE SERVICES SHALL HAVE OUTSIDE STEM AND YONE (OS & Y) HANDWHEEL OPERATORS OR BUTTERFLY VALVES, AND LISTED ON APPROVED LIST AS FIRE APPROVED. IF SERVING FIRE SPRINKLERS, TAMPER SWITCHES ARE REQUIRED.
 - PIPE MATERIAL AND FITTINGS SHALL BE AS SPECIFIED IN CLT WATER STANDARD SPECIFICATION. ALL JOINTS SHALL BE RESTRAINED WITH METALLIC RESTRAINTS OR APPROVED EQUAL.
 - SUPPORT OF ASSEMBLY SHALL BE DESIGNED BY OWNER. 8" - 12" SHALL BE SUPPORTED AT EACH VALVE AND SHALL NOT BLOCK RELIEF VALVE ON DRAIN PORT. SUPPORT SHALL MANUFACTURED ADJUSTABLE HEIGHT SUPPORT, CAPABLE OF FINE ADJUSTMENT AND RATED FOR THE WEIGHT OF THE ASSEMBLY AND THE WATER WITHIN.
 - INSULATED ENCLOSURE SHALL BE AS SPECIFIED IN CLT WATER ENCLOSURE INFORMATION. HEATED INSULATED ENCLOSURE ARE REQUIRED FOR FIRE LINE SERVICES. NO INSULATION SHALL BE WRAPPED AROUND BPA.
 - ALL LOCATIONS FOR BPAs REQUIRE CLT WATER APPROVAL AND MUST BE OUTSIDE OF ZONING SET-BACK DIRECTLY BEHIND METER.
 - THERE SHALL BE NO TAPS, PIPING BRANCHES UNAPPROVED BYPASS PIPING, HYDRANTS, FIRE DRIFT, CONNECTION POINTS, OR OTHER WATER USING APPURTENANCES CONNECTED TO THE SUPPLY LINE BETWEEN ANY WATER METER AND ITS CLT WATER - REQUIRED BACKFLOW PREVENTER.
 - EACH CLT WATER REQUIRED BPA IS REQUIRED TO BE TESTED BY A CLT WATER APPROVED CERTIFIED TESTER PRIOR TO PLACING THE WATER SYSTEM IN SERVICE. TEST RESULTS SHALL BE SUBMITTED TO CLT WATER WITHIN 30 DAYS AND TESTED ANNUALLY THEREAFTER SUBMITTING RESULTS TO CLT WATER.
 - ALL INSTALLATIONS INTENDED FOR ADDRESSING CLT WATER REQUIREMENTS, REQUIRE PRIOR APPROVAL FROM THE APPROPRIATE CLT WATER BACKFLOW INSPECTOR.
- ZONING SETBACK
- CLT WATER REQUIRED BPA ABOVE GROUND
- SEE NOTE #6 & #7
- CLT WATER METER
- TYPICAL LOCATION REQUIREMENT FOR ABOVE GROUND INSTALLATION N.T.S.



WILSON AIR CENTER

NORTH TERMINAL
CHARLOTTE OFFICE
INTERNATIONAL AIRPORT
5327 WINDFIS FIELD DRIVE
CHARLOTTE, NC 28208



ARCHITECT

W

THE WILSON GROUP

P O BOX 5510
CHARLOTTE, NC 28299
(704) 331-8747

CIVIL ENGINEER
TALBERT, BRIGHT & ELLINGTON

3525 WHITEHALL PARK DRIVE, SUITE 210
CHARLOTTE, NC 28273
(704) 426-6070 FIRM NO. C-1163

STRUCTURAL ENGINEER
STEWART

101 N. TRYON ST., SUITE 1400
CHARLOTTE, NC 28202
(704) 909-3523 FIRM NO. C-1051

MECHANICAL, ELECTRICAL, PLUMBING & FIRE PROTECTION ENGINEER
SABER ENGINEERING

2923 S. TRYON ST., SUITE 200
CHARLOTTE, NC 28203
(704) 373-0068 FIRM NO. C-2130

LANDSCAPE ARCHITECT
URBAN DESIGN PARTNERS

1318-E CENTRAL AVENUE
CHARLOTTE, NC 28205
(704) 334-3303 FIRM NO. C-TBD

COMMUNICATIONS INFRASTRUCTURE
DB CONSULTING

246 LOVES FARM ROAD
BLACKSBURG, SC 29702
(704) 497-7229 FIRM NO. C-TBD

DATE DECEMBER 7, 2018
PROJECT NUMBER 9197-000

SHEET TITLE
MISCELLANEOUS DETAILS

SHEET NUMBER
C-606