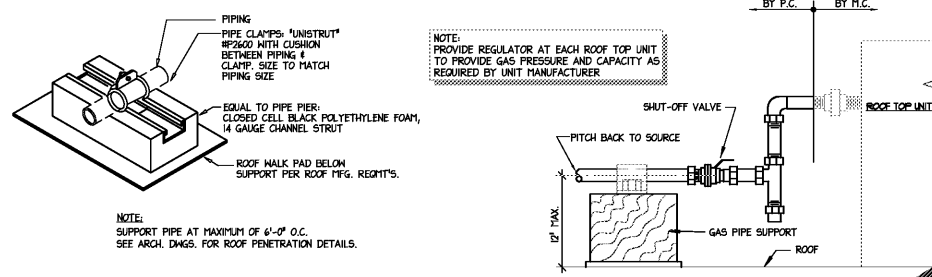
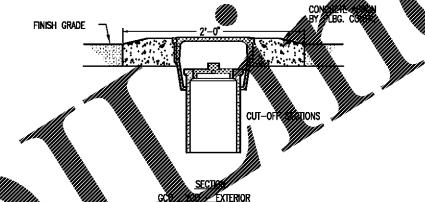


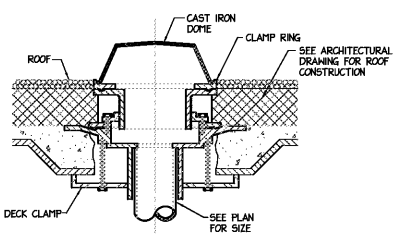
**1 WALL CLEANOUT DETAIL**  
 NO SCALE (WCO)



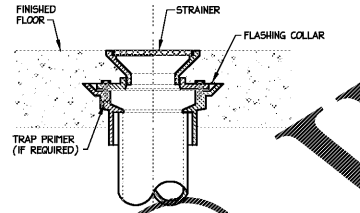
**2 GAS PIPING DETAIL**  
 NO SCALE



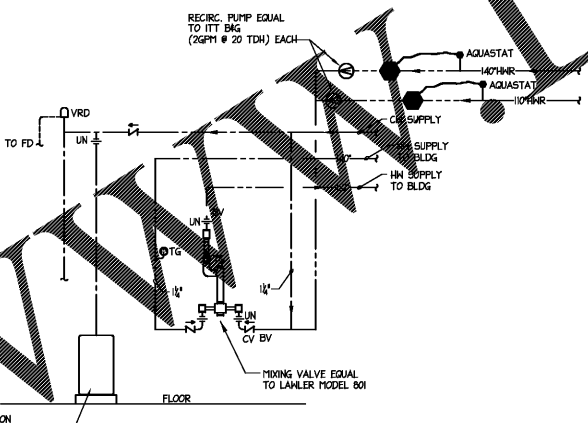
**3 EXTERIOR CLEANOUT DETAIL**  
 NO SCALE (GCO)



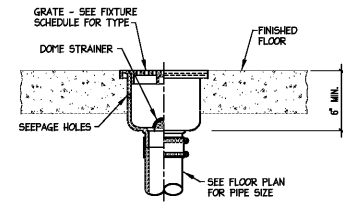
**4 ROOF DRAIN DETAIL**  
 NO SCALE



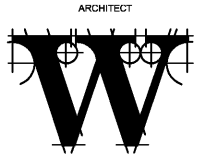
**5 FLOOR DRAIN DETAIL**  
 NO SCALE (FD)



**6 MIXING VALVE/RECIRC DETAIL**  
 NO SCALE  
 INSTALL WATER HEATER AND MIXING VALVE PER MANUFACTURER RECOMMENDATION.



**7 FLOOR SINK DETAIL**  
 NO SCALE (FS)



ARCHITECT  
**THE WILSON GROUP**  
 P O BOX 5510  
 CHARLOTTE, NC 28299  
 (704) 331-9747

CIVIL ENGINEER  
**TALBERT, BRIGHT & ELLINGTON**  
 3525 WHITEHALL PARK DRIVE, SUITE 210  
 CHARLOTTE, NC 28273  
 (704) 426-8070 FIRM NO. C-1163

STRUCTURAL ENGINEER  
**STEWART**  
 101 N TRYON ST., SUITE 1400  
 CHARLOTTE, NC 28202  
 (704) 909-3523 FIRM NO. C-1051

MECHANICAL, ELECTRICAL, PLUMBING & FIRE PROTECTION ENGINEER  
**SABER ENGINEERING**  
 2923 S. TRYON ST., SUITE 280  
 CHARLOTTE, NC 28205  
 (704) 373-0088 FIRM NO. C-2130

LANDSCAPE ARCHITECT  
**URBAN DESIGN PARTNERS**  
 1318-E8 CENTRAL AVENUE  
 CHARLOTTE, NC 28205  
 (704) 334-3303 FIRM NO. C-150

COMMUNICATIONS INFRASTRUCTURE  
**DB CONSULTING**  
 346 LYLES FARM ROAD  
 BLACKSBURG, SC 29702  
 (704) 497-7228 FIRM NO. C-150

REVISIONS

|  |  |
|--|--|
|  |  |
|  |  |
|  |  |
|  |  |
|  |  |

DATE DECEMBER 7, 2018  
 PROJECT NUMBER 9197-000

SHEET TITLE  
**PLUMBING DETAILS**

SHEET NUMBER  
**P-002**

Order Plans @