

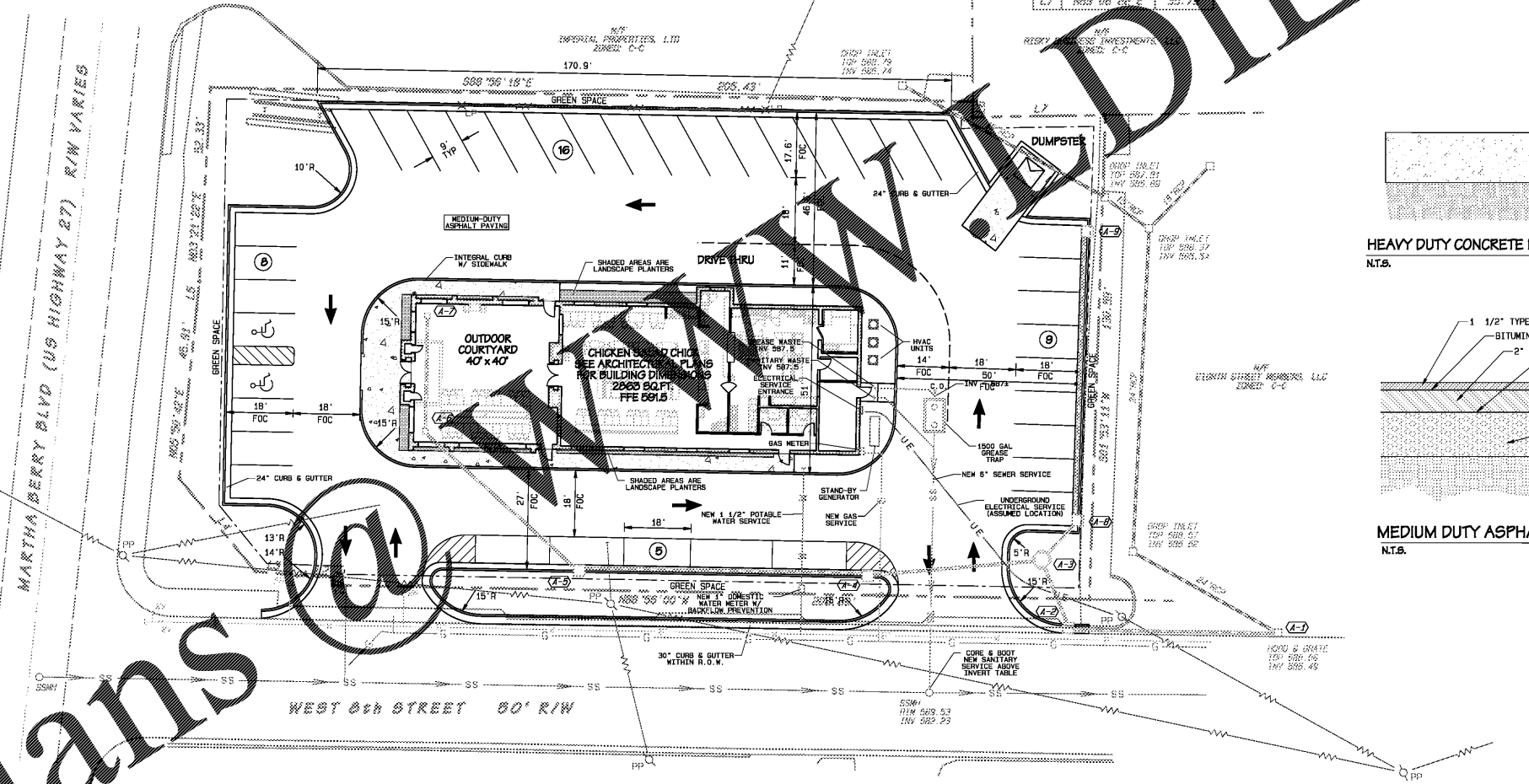
UTILITY NOTES:
 THE CITY OF ROME WATER AND SEWER DIVISION WILL BE RESPONSIBLE FOR CONNECTION TO THE EXISTING SEWER MAIN IN SHORTER AVENUE AND THE INSTALLATION OF A CLEAN OUT IN COMPLIANCE WITH THE CITY OF ROME STANDARD SANITARY SEWER CONNECTION DETAIL. APPLICATION FOR THIS CONNECTION IS TO BE MADE WITH MR. JEFF WENZEL AT THE CITY OF ROME WATER AND SEWER DIVISION LOCATED AT 200 VAUGHN ROAD. JEFF CAN BE CONTACTED BY PHONE AT 706-252-4567. COST FOR SAID CONNECTION SHALL BE ESTABLISHED BY THE CITY OF ROME. QUESTIONS RELATED TO THIS CONNECTION SHALL BE DIRECTED TO MR. TIM BRUNSON, WITH THE CITY OF ROME WATER AND SEWER DIVISION AT 706-252-1876.

THE CITY OF ROME WATER AND SEWER DIVISION WILL BE RESPONSIBLE FOR CONNECTION (S) TO EXISTING WATER MAIN ON SHORTER AVENUE AND THE INSTALLATION OF THE DOMESTIC WATER METER IN COMPLIANCE WITH THE CITY OF ROME TYPICAL WATER SERVICE CONNECTION STANDARD DETAIL (COMMERCIAL). APPLICATION FOR THIS CONNECTION IS TO BE MADE WITH MR. JEFF WENZEL AT THE CITY OF ROME WATER AND SEWER DIVISION LOCATED AT 200 VAUGHN ROAD. JEFF CAN BE CONTACTED BY PHONE AT 706-252-4567. COST FOR SAID CONNECTION SHALL BE ESTABLISHED BY THE CITY OF ROME. QUESTIONS RELATED TO THIS CONNECTION SHALL BE DIRECTED TO MR. TIM BRUNSON, WITH THE CITY OF ROME WATER AND SEWER DIVISION AT 706-252-1876.

SHOULD COMMERCIAL COOKING COMPONENTS (COMMERCIAL DISHWASHER, FRYER, ETC.) BE INSTALLED INITIALLY OR AFTER INITIAL CONSTRUCTION, THE INSTALLATION OF A GREASE TRAP IN FULL AND COMPLETE COMPLIANCE WITH CURRENT STANDARDS SHALL BE REQUIRED AT THE SOLE EXPENSE OF THE OWNER. THE GREASE TRAP SHALL BE INSPECTED BY MR. JEFF WENZEL, CITY OF ROME SYSTEMS INSPECTOR PRIOR TO THE INSTALLATION OF THE LID. FAILURE TO OBTAIN THE REQUIRED INSPECTION OF THE GREASE TRAP PRIOR TO THE INSTALLATION OF THE LID SHALL REQUIRE THE CONTRACTOR TO REMOVE THE LID FOR THE REQUIRED INSPECTION. ALL COST RELATED TO THE REMOVAL OF THE LID FOR THIS INSPECTION SHALL BE THE FILL AND COMPLETE RESPONSIBILITY OF THE OWNER. MR. WENZEL MAY BE CONTACTED AT 706-252-4558.

LINE TABLE

LINE NO.	DESCRIPTION	LENGTH
L.1	NGP 10" 54" E	2.21
L.2	NGP 10" 54" E	9.80
L.3	NGP 10" 54" E	11.51
L.4	NGP 10" 54" E	32.52
L.5	NGP 10" 54" E	35.53
L.6	SDS 12" 30" N	4.00
L.7	NGP 10" 54" E	35.53



811
 Know what's below.
 Call before you dig.

24 HOUR CONTACT:
KING BRASWELL
 (351) 319-1381

- LEGEND**
- Stream / Water
 - Fence Line
 - Wood Fence
 - Graindrill
 - Sign
 - Benchmark
 - Utility Pole
 - Valve
 - Fire Hydrant
 - Single Wing C.B.
 - Double Wing C.B.
 - Drop (Grate) Inlet
 - Area Inlet
 - Combustion Inlet
 - Headwall
 - Flared End Sec'n
 - Storm Drain
 - Manhole / J.B.
 - Sanitary Sewer
 - Marsh / Wetland

17 OCT 2018: ADDED UPDATED BUILDING FOOTPRINT
 26 OCT 2018: CONCEPTUAL GRADING PLAN
 05 DEC 2018: REVISION FOR AGENCY REVIEW

CIVIL SOUTH
 INCORPORATED
 Civil & Structural Engineers
 416 Shiloh Avenue
 Rome, Georgia 30165
 (770) 546-1929

GEORGIA REGISTERED PROFESSIONAL ENGINEER
 NO. 12574
 MARK R. SHAMBLIN
 GWCC LEVEL II CERT #11595

DATE: 02 OCT 2018
 SCALE: 1" = 20'
 DRAWN: MS
 CHECKED: MS
 PROJECT NO.: 210

COMMERCIAL DEVELOPMENT PLANS
CHICKEN SALAD CHICK
 800 MARtha BERRY BLVD
 LAND LOT 237, 238th DISTRICT, 5th SECTION
 4th WARD OF THE CITY OF ROME
 15212 SQUARE FEET, GEORGIA

SITE, LAYOUT & UTILITY PLAN
 C-2

