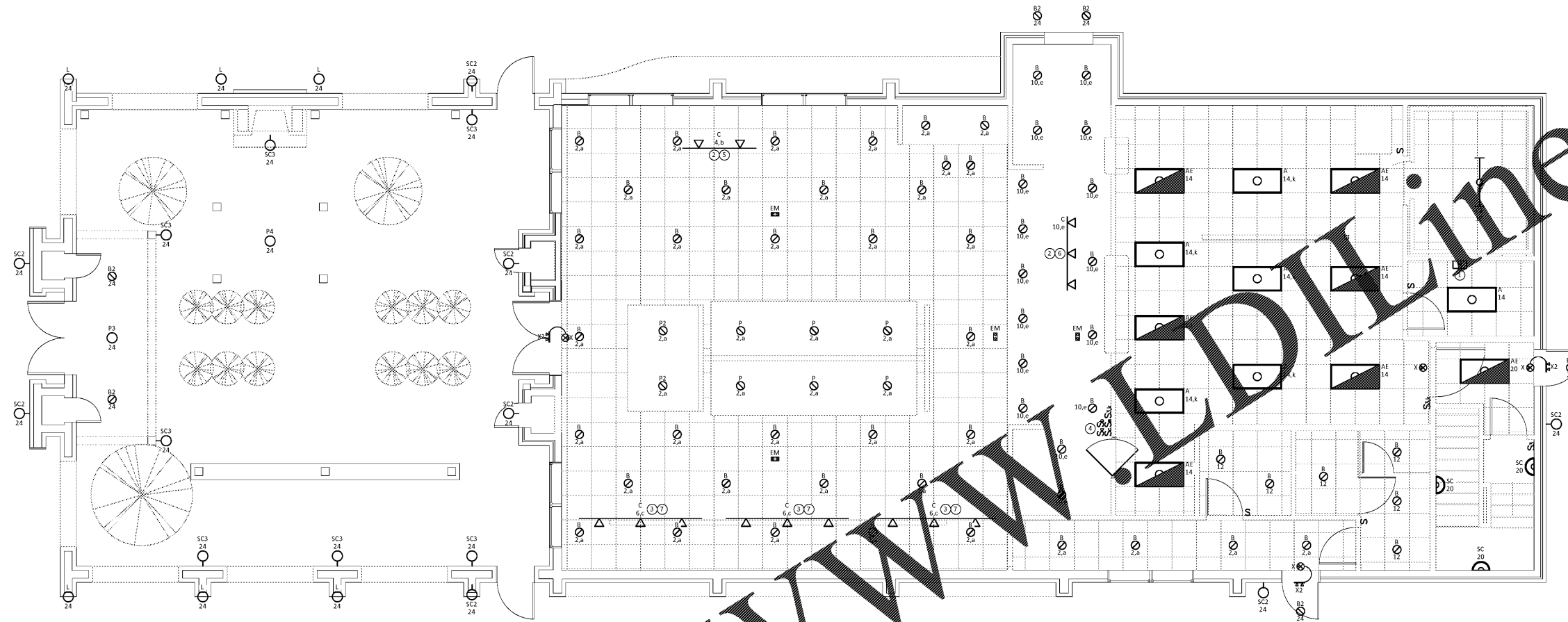




jb A
jared bussey
 architect
 1604 28th Ave South
 Birmingham, AL 35209
 205.533.3563



dlb associates
 CONSULTING ENGINEERS, P.C.
 3290 Cumberland Club Drive, Suite 300
 Atlanta, GA 30339
 Questions For dlb Call: Andrew Bior
 dlb Project ID: 26372 Phone: (770) 927-5033



FLOOR PLAN Scale: 1/4"=1'-0" Drawing: E2.1
 1' 2' 4' 8' Detail: 01

KEY NOTES (SYMBOLS ①, ②, ETC.)

1. Astronomical Mechanical Time Clock Mounted Near Power Panel Below Ceiling For Control Of Signage.
2. 6 Foot Track. Refer To Architect's Reflected Ceiling Plan For Exact Location.
3. 8 Foot Track. Refer To Architect's Reflected Ceiling Plan For Exact Location.
4. Lighting Switch Bank. Coordinate Exact Location In Field With Owner.
5. The One Track Section On Circuit PP1-4 Shall Be Fed From RCLF11 WH Current Limiting End Feed With TCLCB 1A WHT Current Limiting Circuit Breaker.
6. The One Track Section On Circuit PP1-10 Shall Be Fed From RCLF11 WH Current Limiting End Feed With TCLCB 1A WHT Current Limiting Circuit Breaker.
7. The Three Track Sections On Circuit PP1-6 Shall Be Fed From One RCLF11 WH Current Limiting End Feed With TCLCB 3A WHT Current Limiting Circuit Breaker. Provide R38 End Feed Connectors To Daisy Chain Track Sections On Same Circuit.

GENERAL NOTES

1. Lighting Fixture Locations Shown Are Approximate. Coordinate The Final Lighting Fixture Locations And Trim Type With The Architectural Reflected Ceiling Plans.
2. Refer To The Lighting Fixture Schedule For Detailed Information About Each Lighting Fixture.
3. Lighting Fixtures That Provide Illumination During Normal And Emergency Operating Conditions Have Been Shown Half Shaded And Shall Include An Integral, Emergency Battery Pack Or Remote Inverter Connected To The Lighting Circuit Serving The Same Fixture, Room Or Area Ahead Of All Local Switching.
4. Exit Signs Shall Be Connected To The Lighting Circuit Serving The Same Room Or Area And Ahead Of All Local Switching.
5. Lighting Fixture Circuit Numbers Shown On This Drawing Shall Be Connected To Panel 'PP1'.
6. Provide Through-Penetration Firestopping At All Fire-Rated Wall / Floor Assembly Penetrations.

Chicken Salad Chick
 Rome, Georgia
 800 Martha Berry Blvd,
 Rome, GA 30165

No.	Name	Date

Client:
 KSB, LLC
 Project Location:
 800 Martha Berry Blvd,
 Rome, GA 30165

DATE: December 14, 2019
 DRAWING TITLE:
 Lighting Plan - First Floor
 PROJECT NUMBER: 78-17
 FILE NUMBER: 78-17 CSC Rome.rvt
 SHEET of
 DRAWING NUMBER
E2.1

Order Plans @