



jb A

jared bussey
architect

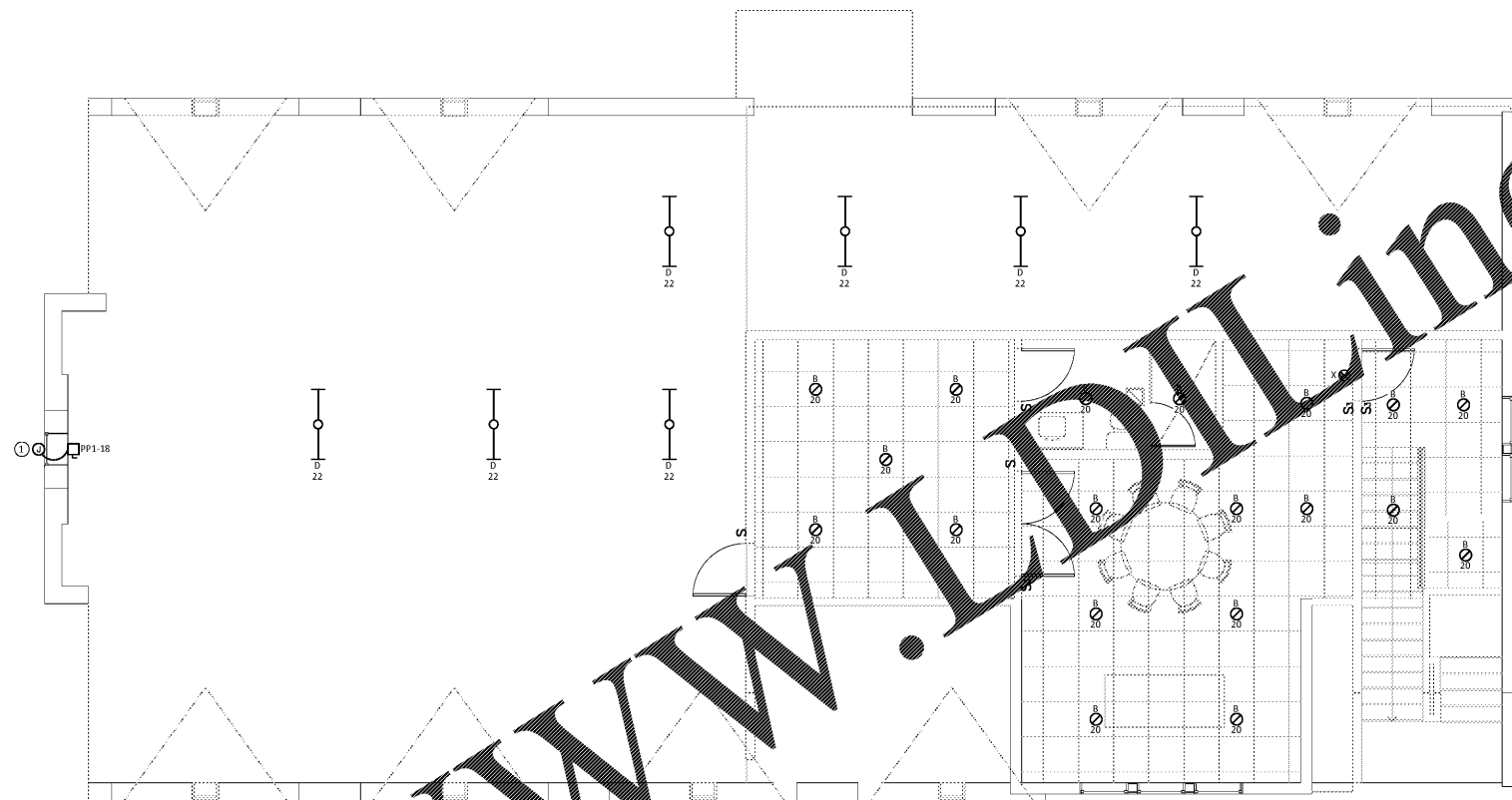
1604 28th Ave South
Birmingham, AL 35209
205.533.3563



12/31/14

dlb associates
CONSULTING ENGINEERS, P.C.

3290 Cumberland Club Drive, Suite 300
Atlanta, GA 30338
Questions For dlb Call: Andrew Bier
DLB Project ID: 26372 Phone: (770) 927-5023



FLOOR PLAN Scale: 1/4"=1'-0" Drawing: E2.2
1' 2' 4' 8' Detail: 01

KEY NOTES (SYMBOLS ①, ②, ETC.)

1. Disconnect Switch And Junction Box For Signage; Coordinate Exact Location In Field With Owner And Architect. Circuit #18 Shall Be Controlled Via Tenant's Timeclock. Disconnect Switch To Be Mounted Above Suspended Ceiling.

GENERAL NOTES

1. Lighting Fixture Locations Shown Are Approximate. Coordinate The Final Lighting Fixture Locations And Trim Type With The Architectural Reflected Ceiling Plans.
2. Refer To The Lighting Fixture Schedule For Detailed Information About Each Lighting Fixture.
3. Lighting Fixtures That Provide Illumination During Normal And Emergency Operating Conditions Have Been Shown Half Shaded And Shall Include An Integral, Emergency Battery Pack Or Remote Inverter Connected To The Lighting Circuit Serving The Same Fixture, Room Or Area Ahead Of All Local Switching.
4. Exit Signs Shall Be Connected To The Lighting Circuit Serving The Same Room Or Area Ahead Of All Local Switching.
5. Lighting Fixture Circuit Numbers Shown On This Drawing Shall Be Connected To Panel 'PP1'.
6. Provide Through-Penetration Firestopping At All Fire-Rated Wall / Floor Assembly Penetrations.

Chicken Salad Chick
Rome, Georgia
800 Martha Berry Blvd,
Rome, GA 30165

| No. | Name | Date |
|-----|------|------|
| | | |
| | | |
| | | |
| | | |

Client:
KSB, LLC
Project Location:
800 Martha Berry Blvd,
Rome, GA 30165

DATE: December 14, 2019
DRAWING TITLE: Lighting Plan - Second Floor
PROJECT NUMBER: 78-17
FILE NUMBER: 78-17 CSC Rome.rvt
SHEET of
DRAWING NUMBER
E2.2

Order Plans @

www.LDOnline.com