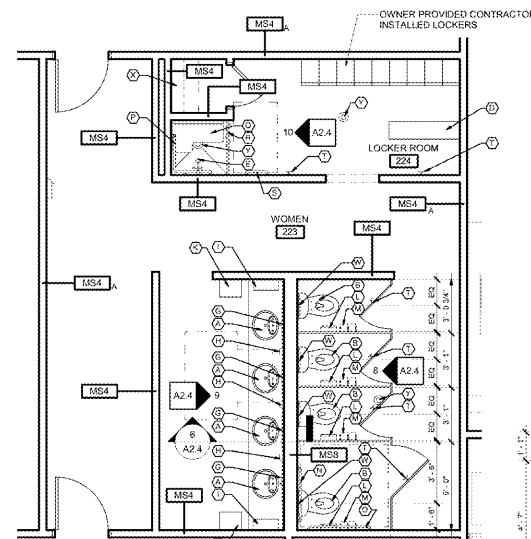
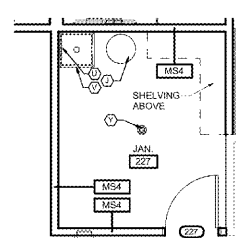


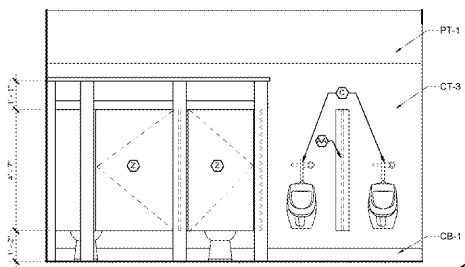
1 Enlarged Restroom Plan - 214  
A2.4 1/4" = 1'-0"



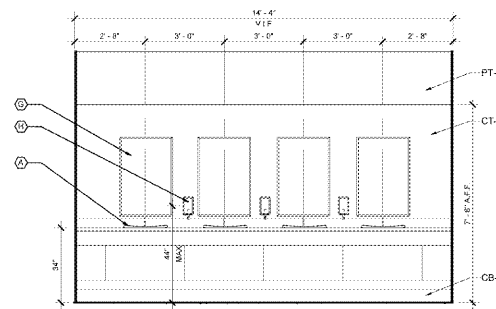
2 Enlarged Restroom Plan - 223  
A2.4 1/4" = 1'-0"



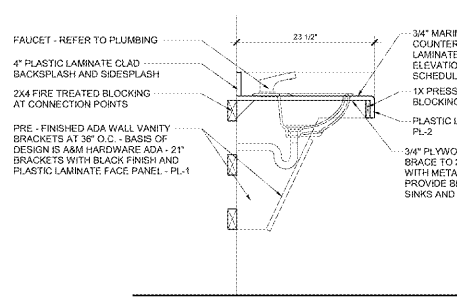
3 Enlarged Plan - 227  
A2.4 1/4" = 1'-0"



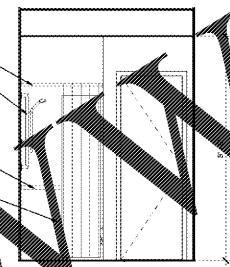
4 Mens 214  
A2.4 3/8" = 1'-0"



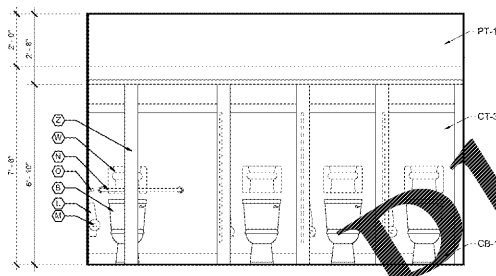
5 Mens 214  
A2.4 3/8" = 1'-0"



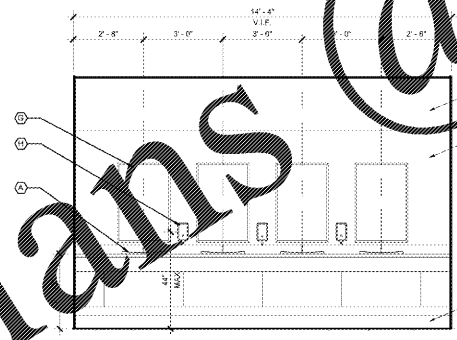
6 Laboratory Section  
A2.4 1" = 1'-0"



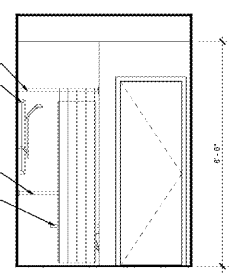
7 Locker Room 215  
A2.4 3/8" = 1'-0"



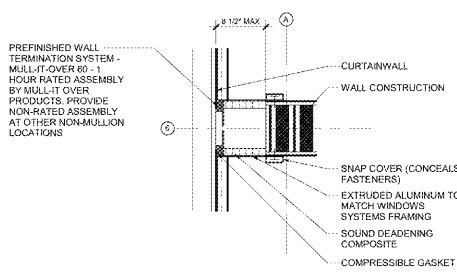
8 Women 223  
A2.4 3/8" = 1'-0"



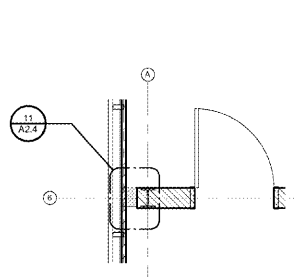
9 Women 223  
A2.4 3/8" = 1'-0"



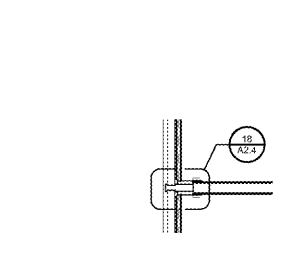
10 Locker Room 224  
A2.4 3/8" = 1'-0"



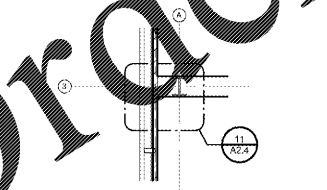
11 Wall Termination Detail  
A2.4 1" = 1'-0"



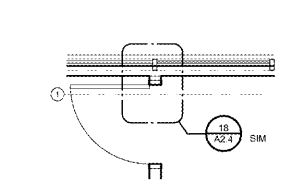
12 Enlarged Plan Detail  
A2.4 3/8" = 1'-0"



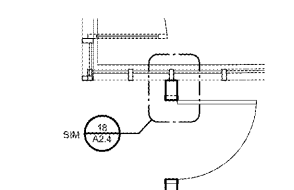
13 Enlarged Plan Detail  
A2.4 3/8" = 1'-0"



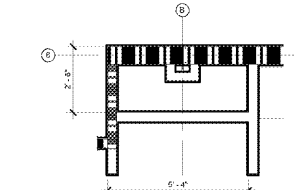
14 Enlarged Plan Detail  
A2.4 3/8" = 1'-0"



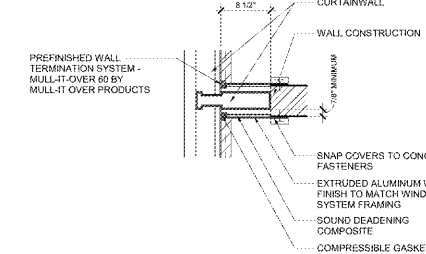
15 Enlarged Plan Detail  
A2.4 3/8" = 1'-0"



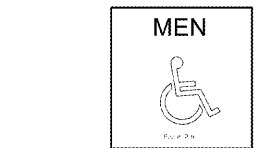
16 Enlarged Plan Detail  
A2.4 3/8" = 1'-0"



17 Existing Operable Partition  
A2.4 3/8" = 1'-0"



18 Wall Termination Detail  
A2.4 1" = 1'-0"



19 Ada Restroom Sign  
A2.4 3" = 1'-0"

### Toilet Accessories Legend, Keynotes & Notes

**Keynote Legend**

- (A) LAVATORY - REFER TO PLUMBING
- (B) WATER CLOSING FLOOR VALVE - REFER TO PLUMBING
- (C) URINAL - WALL MOUNTED - REFER TO PLUMBING
- (D) 12 x 48" PLASTIC PEDESTAL
- (E) SHOWER CONTROLS - ADA COMPLIANT - REFER TO PLUMBING
- (F) DRINKING FOUNTAIN WATER CLOSING - ADA COMPLIANT HIGH LOW WALL MOUNTED - REFER TO PLUMBING
- (G) MIRROR - WALL MOUNTED 24" WIDE FIXED FRAME MIRROR CENTERED OVER LAVATORY
- (H) FOAMING SOAP DISPENSER - WALL MOUNTED
- (I) TOWEL DISPENSER - SURFACE MOUNTED AUTOMATED ROLL TOWEL DISPENSER HEATER ON CONCRETE PAD - REFER TO PLUMBING
- (J) WASTE RECEPTACLE - FREE STANDING STAINLESS STEEL 13 GALLON WASTE RECEPTACLE WITHOUT SWING TOP
- (K) SANITARY NAPKIN DISPOSAL - SURFACE MOUNTED
- (L) TOILET TISSUE DISPENSER - DUAL ROLL
- (M) GRAB BAR - 36" STAINLESS STEEL GRAB BAR WITH SAFETY-GRIP FINISH
- (N) GRAB BAR - 42" STAINLESS STEEL GRAB BAR WITH SAFETY-GRIP FINISH
- (O) GRAB BAR - 24" X 24" X 34" STAINLESS STEEL ADA COMPLIANT SHOWER GRAB BAR WITH SAFETY-GRIP FINISH
- (P) SHOWER SEAT - WALL MOUNTED PHENOLIC ADA COMPLIANT FOLD DOWN SHOWER SEAT
- (Q) SHOWER CURTAIN ASSEMBLY - 36" STAINLESS STEEL CURTAIN ROD WITH 42" X 12" ANTI-MICROBIAL SHOWER CURTAIN AND STAINLESS STEEL CURTAIN HOOKS
- (R) TOWEL BAR - WALL MOUNTED 24" X 8" STAINLESS STEEL TOWEL BAR
- (S) COAT HOOK - WALL MOUNTED
- (T) MOP HOLDER - REFER TO SPECIFICATIONS
- (U) MOP SINK - REFER TO PLUMBING
- (V) TOILET SEAT COVER DISPENSER - SURFACE MOUNTED
- (W) WIRE SHELVING AT 2'-0", 4'-0", AND 6'-0" A.F.F.
- (X) FLOOR DRAIN - SLOPE TO DRAIN AT SHOWER LOCATIONS.
- (Y) SOLID PLASTIC TOILET PARTITION
- (Z) SOLID PLASTIC URINAL SCREEN - WALL MOUNTED

**General Notes**

- ALL EXPOSED PIPING (UNDER LAVATORIES) TO BE INSULATED OR PROTECTED.
- PROVIDE BLOCKING IN WALLS FOR GRAB BARS AND TOILET ACCESSORIES. GRAB BARS SHALL WITHSTAND A LOAD OF 250 LBS. APPLIED IN ANY DIRECTION.
- FIXTURE ELEVATIONS ARE FOR REFERENCE ONLY. REFER TO PLUMBING FOR ACTUAL FIXTURE TYPES.
- ALL ACCESSORIES SHALL BE KEYPED ALIKE.
- ACCESSORIES SHALL BE THE PRODUCTS OF A SINGLE MANUFACTURER - UNLESS SPECIFIED OTHERWISE.
- CONTROLS AND OPERATING MECHANISMS SHALL BE OPERABLE WITH ONE HAND AND SHALL NOT REQUIRE TIGHT GRASPING, PINCHING, OR TWISTING OF THE WRIST. THE FORCE REQUIRED TO ACTIVATE CONTROLS SHALL BE NO GREATER THAN 5 LBS.F.
- CONTROLS FOR FLUSH VALVES SHALL BE MOUNTED ON THE WIDE SIDE OF TOILET AREAS NO MORE THAN 44" ABOVE FINISH FLOOR.
- MODEL NUMBERS LISTED IN SPECIFICATIONS FOR TOILET ROOM ACCESSORIES ARE MANUFACTURED BY BRADLEY CORPORATION ARE LISTED TO ESTABLISH A STANDARD OF QUALITY FOR DESIGN, FUNCTION, MATERIALS, WORKMANSHIP AND APPEARANCE. OTHER MANUFACTURERS MAY BE SUBMITTED FOR EVALUATION BY THE OWNER.

PRECISION Planning Inc. **planners • engineers • architects • surveyors**  
400 Park Boulevard, Lawrenceville, GA 30046  
770.333.8300 • www.ppi.com

3587 PARKWAY LANE INTERIOR OFFICE RENOVATION  
3587 PARKWAY LANE NORCROSS, GA 30092

ENLARGED PLANS AND DETAILS  
DESIGN: PPI  
DRAWING: KSS  
CHECKED: JD

SHEET TITLE  
RELEASE

DATE: 12/17/2018 10:31:13 AM  
PROJECT NUMBER: A18-101G5B  
FILE NAME: A18-101G5B  
FILE NUMBER: A2.4

C:\Users\874\Documents\A18-101 MODEL\_detached\_874\lb.vrt  
12/17/2018 10:31:13 AM  
A18-101G5B

Order Plans @ WWW.DIYLINE.COM