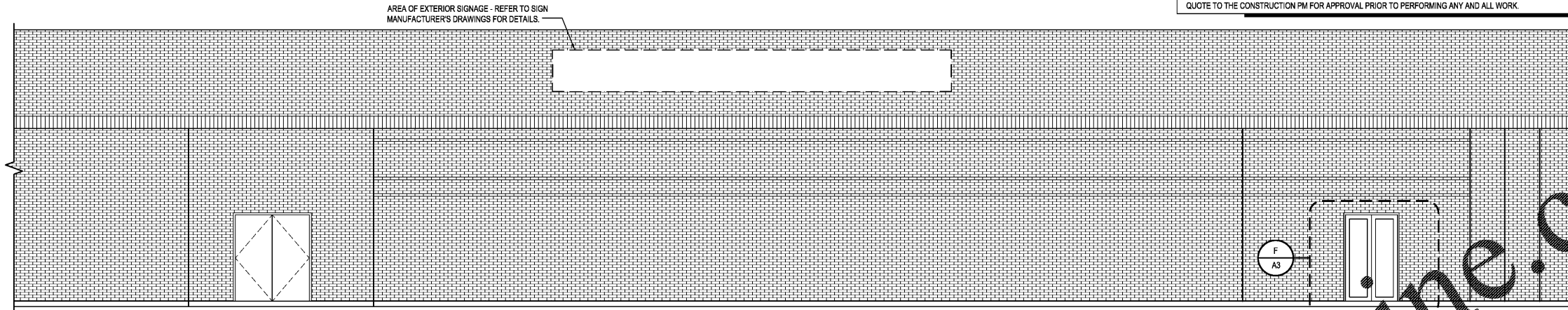
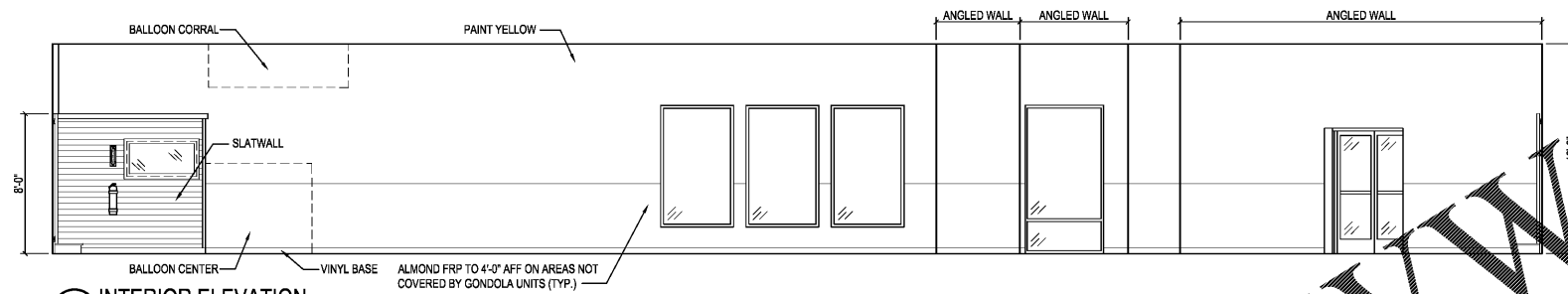


NOTE:
SIGNS, LOCATION, NUMBER AND SIZE ARE NOT APPROVED UNDER THIS BUILDING PERMIT. A SEPARATE SIGN LOCATION PERMIT IS REQUIRED FOR EACH SIGN.

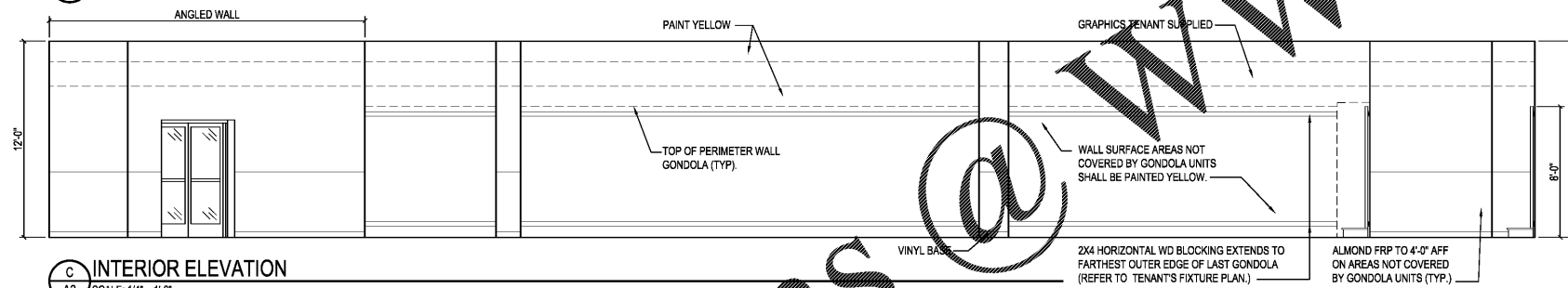
NOTES: CONTRACTOR SHALL REMOVE AND DISPOSE OF ANY AND ALL PREVIOUS TENANT'S EXTERIOR SIGNAGE LEFT BEHIND. ALL EXISTING MATERIALS TO REMAIN WHICH ARE DAMAGED OR OTHERWISE DISTURBED BY REMOVAL OF PREVIOUS TENANT SIGNAGE SHALL BE PATCHED OR REPAIRED AND PAINTED TO MATCH EXISTING ADJACENT MATERIALS SO THAT THE REPAIR IS IMPERCEPTIBLE. CONTRACTORS SHALL NOT INCLUDE THIS SCOPE OF WORK IN THEIR BID AND WILL BE HANDLED VIA CHANGE ORDER AFTER SITE EVALUATION IS DONE BY WINNING BIDDER. CONTRACTOR SHALL FORWARD THE EVALUATION AND PRICE QUOTE TO THE CONSTRUCTION PM FOR APPROVAL PRIOR TO PERFORMING ANY AND ALL WORK.



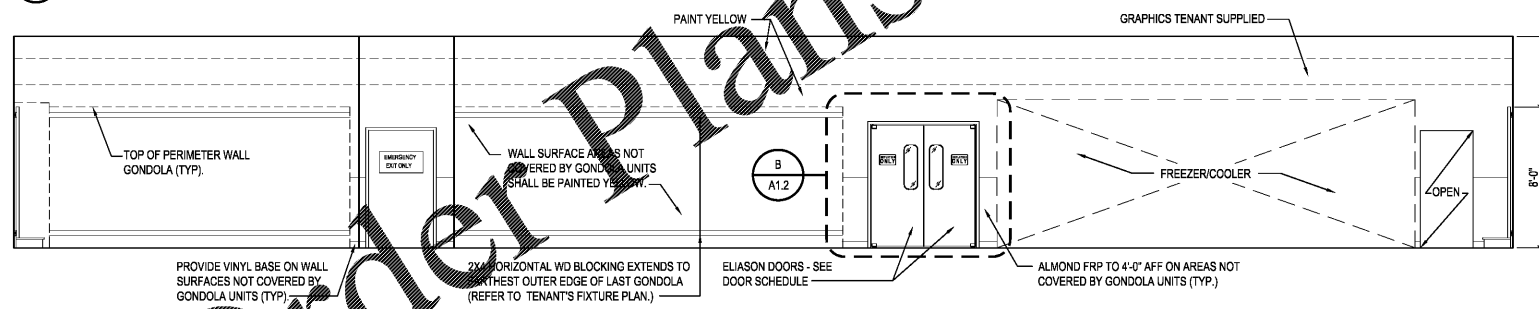
A EXTERIOR ELEVATION
A3 SCALE: 1/4" = 1'-0"



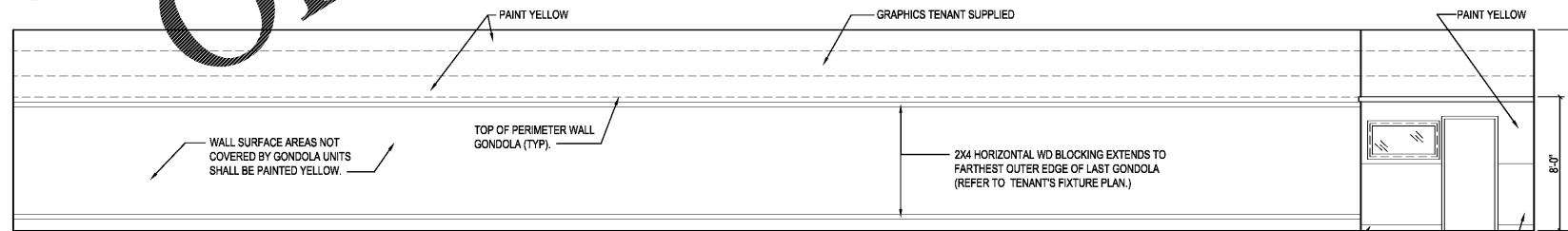
B INTERIOR ELEVATION
A3 SCALE: 1/4" = 1'-0"



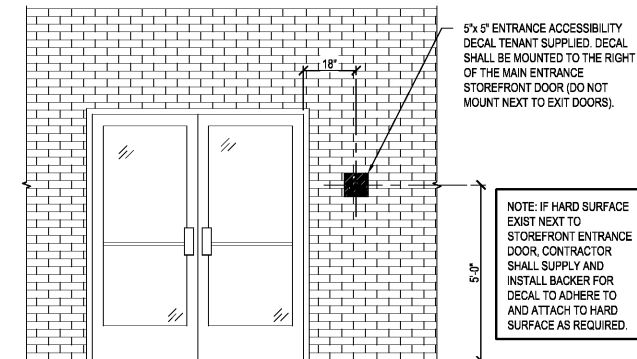
C INTERIOR ELEVATION
A3 SCALE: 1/4" = 1'-0"



D INTERIOR ELEVATION
A3 SCALE: 1/4" = 1'-0"



E INTERIOR ELEVATION
A3 SCALE: 1/4" = 1'-0"



F ACCESSIBILITY DECAL AT STOREFRONT ENTRANCE
A3 SCALE: 1/2" = 1'-0"

--	--	--	--	--	--



RRMM
ARCHITECTS, PC
Donna A Elliott, Architect

1317 Executive Blvd, Suite 200
Chesapeake, VA 23320
(757)622-2828 / fax (757)622-6883

--	--	--	--	--	--

--	--	--	--	--	--

DOLLAR TREE
MIDDLESBORO MALL, DEAL #11346
MIDDLESBORO, KENTUCKY
ELEVATIONS

--	--	--	--	--	--