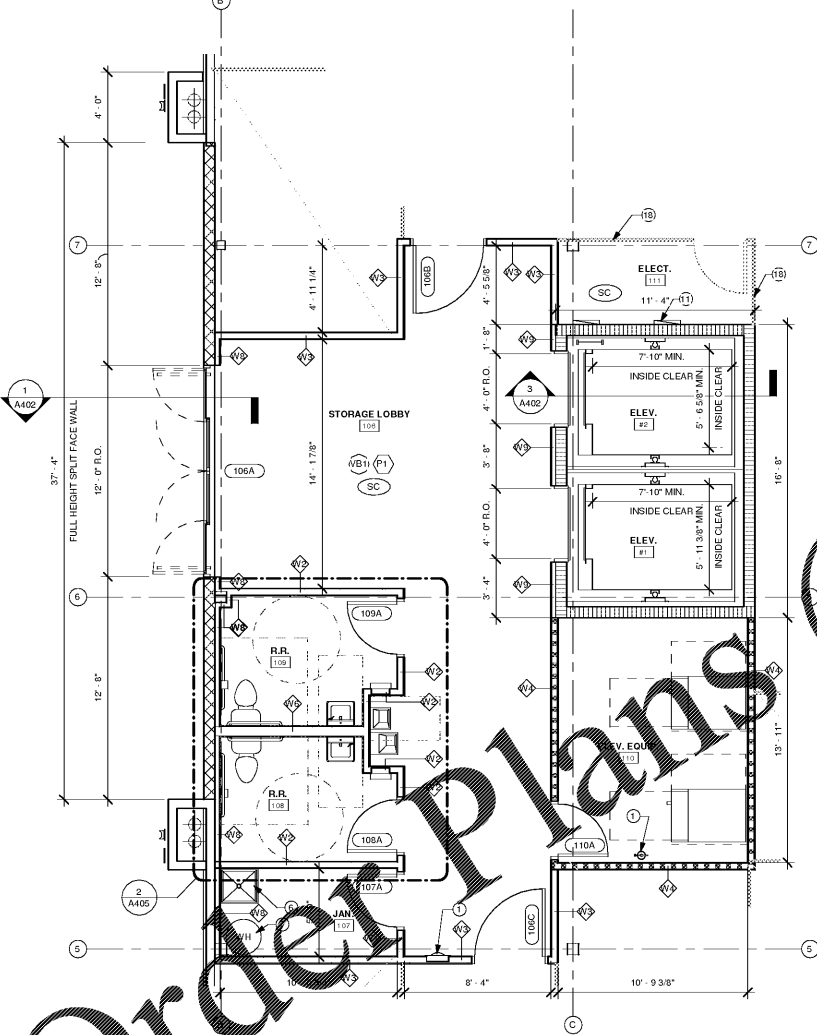
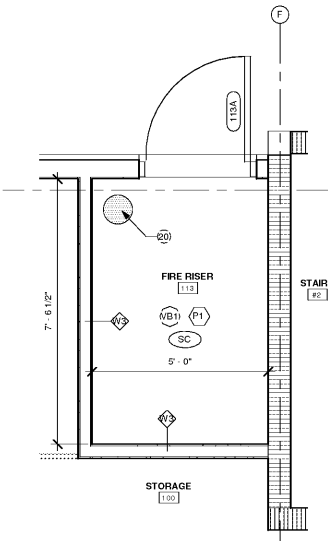


Order Plans @

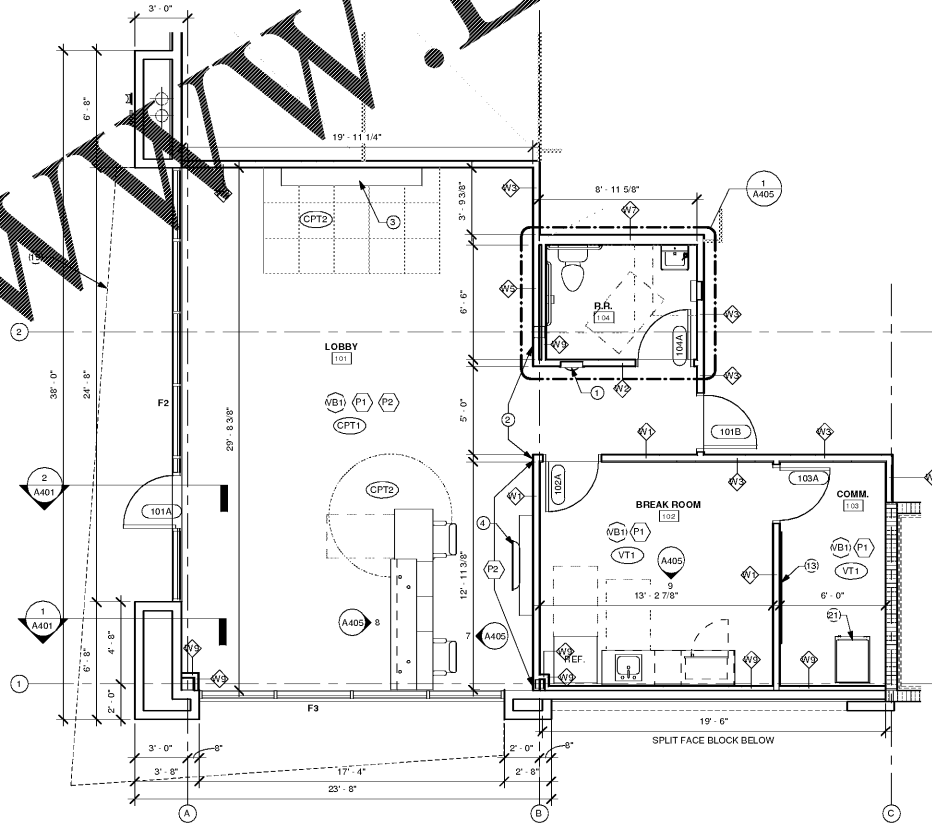
WWW.LDILINE.COM



2 ENLARGED STORAGE LOBBY FLOOR PLAN  
SCALE: 1/4" = 1'-0"



3 LEVEL 1 - FIRE RISER  
SCALE: 1/2" = 1'-0"



1 ENLARGED OFFICE FLOOR PLAN  
SCALE: 1/4" = 1'-0"

FINISH SPECIFICATIONS

- FLOOR FINISHES**
- CT1 MATERIAL: CERAMIC TILE  
MFG: DALLIE PORCELATO  
STYLE: PEPE GRIGIO TEXTURED  
COLOR: 12X12"  
GROUT: LATICRETE #89 SMOKE GRAY
  - SC MATERIAL: CONCRETE - SEALED  
MFG: N/A  
STYLE: SMOOTH  
SIZE: N/A
  - CPT1 MATERIAL: CARPET TILE  
MFG: INTERPLAN  
STYLE: PLAN HEAVE - 10395 RUSTIC  
SIZE: 24X24" LAID NON DIRECTIONALLY
  - CPT2 MATERIAL: CARPET TILE  
MFG: INTERPLAN  
STYLE: EQUUSIRUM 10103  
SIZE: ACCORDANCE  
DIRECTIONALLY
  - VT1 MATERIAL: VINYL TILE  
MFG: ARMSTRONG  
STYLE: 5194 POLAR WHITE  
SIZE: 12X12"
- BASE FINISHES**
- MB1 MATERIAL: VINYL BASE  
MFG: BERKEMER  
STYLE: THUNDER  
COLOR: COVE  
SIZE: 4"
  - TB1 MATERIAL: CERAMIC TILE BASE  
MFG: DALLIE PORCELATO  
STYLE: PEPE GRIGIO CD41  
LOCATION: BALUNES & TOP WET WALL  
SIZE: 4X12"
- WALL FINISHES**
- P1 MATERIAL: PAINT  
MFG: SHERWIN WILLIAMS  
COLOR: SW704 SNOWBOUND  
FINISH: EGGSHELL  
LOCATION: FIELD COLOR
  - P2 MATERIAL: PAINT  
MFG: SHERWIN WILLIAMS  
COLOR: SW655 REAL RED  
FINISH: EGGSHELL  
LOCATION: ACCENT COLOR
  - P3 MATERIAL: PAINT  
MFG: SHERWIN WILLIAMS  
COLOR: SW705 GRAY MATTERS  
FINISH: SEMI-GLOSS ENAMEL  
LOCATION: STAIR RAILINGS AND ROOF ACCESS LADDER
  - WT1 MATERIAL: CERAMIC TILE  
MFG: DALLIE PORCELATO  
COLOR: PEPE GRIGIO UNPOLISHED  
SIZE: 12X12" (4X12" CD41 BALUNES  
LOCATION: AT TOP OF WALL  
GROUT: WET WALLS OF RR, TO 4" A.F.F. LATICRETE #89 SMOKE GRAY
- MILLWORK**
- PL-1 MATERIAL: PLASTIC LAMINATE  
MFG: WILSONART  
COLOR: PROSTY WHITE  
LOCATION: CABINETS
  - PL-2 MATERIAL: PLASTIC LAMINATE  
MFG: WILSONART  
COLOR: 1936 BLACK  
LOCATION: BREAK ROOM COUNTER
  - SS-1 MATERIAL: QUARTZ COUNTER-TOP  
MFG: WILSONART  
COLOR: WHITE PLAY  
LOCATION: LOBBY

GENERAL NOTES

- ALL DIMENSIONS ARE FROM FACE OF FINISH WALL TO FACE OF WALL OR FINISH WALL UNLESS NOTED OR SHOWN OTHERWISE. ANY DIMENSIONS NOT SHOWN OR DEDUCED QUESTIONABLE ARE TO BE VERIFIED BY ARCHITECT. DO NOT SCALE DRAWINGS.
- PROVIDE WOOD BLOCKING SUPPORTS AS REQUIRED FOR ALL SURFACE MOUNTED ITEMS.
- COORDINATE WORK OF THIS TRADE WITH OTHER TRADES.
- NEW DOOR AND FRAME NUMBERS CORRESPOND TO ROOM NUMBERS. WHERE MORE THAN ONE DOOR OCCURS IN A ROOM, A SCHEDULE HAS BEEN ADDED (E.G. 103A).
- PROVIDE MISCELLANEOUS METAL SUPPORT FOR ALL CEILING SUSPENDED ITEMS.
- APPLY SEALANT AT ALL JUNCTURES BETWEEN DIFFERENT MATERIALS (E.G. STOREFRONT AND GYPSUM BOARD).
- APPLY SEALANT AT ALL PLUMBING FITURES AT JUNCTURE WITH WALL.
- APPLY SEALANT AT ALL COULVERTOPS AND BACK SPLASHES AT JUNCTURE WITH WALL.
- ALL STEEL STUDS ARE TO BE BRACED ACCORDING TO MANUFACTURERS LIMITING HEIGHT LIST.
- ALL INTERIOR WALLS SHALL BE MARKED IN PLACE PRIOR TO FRAMING FOR ARCHITECT TO REVIEW.
- ALL DOORS MUST BE INSTALLED WITH AT LEAST THE MINIMUM MANEUVERING CLEARANCE AT THE DOOR APPROACH PER THE MOST CURRENT AMERICANS WITH DISABILITIES ACT AND INTERNATIONAL BUILDING CODE.
- FLOOR SHALL BE SLOPED SMOOGLY TO DRAIN FOR INSTALLATION OF NEW FLOOR FINISHES AS SHOWN.
- ALL FURNITURE & WORK SHALL BE PROVIDED & INSTALLED BY TENANT.
- PROVIDE GYPSUM BOARD, FRAMING AND INSULATION ON EXTERIOR WALL IN ALL CONDITIONS.
- EXTENDING DOWN IN ALL CASES. CONTRACTOR TO OBTAIN NECESSARY PERMITS AND LOCATIONS. CONTRACTOR TO OBTAIN NECESSARY PERMITS AND LOCATIONS. CONTRACTOR TO OBTAIN NECESSARY PERMITS AND LOCATIONS.
- PROVIDE SEPARATE TRAYS TO BUILDING FOR CABLE, TV & TELEPHONE. COORDINATE WITH OWNER.
- MECHANICAL EQUIPMENT IN ROOF WILL NOT BE VISIBLE FROM STREET. IN CASE IT IS VISIBLE, PREMANUFACTURED SCREENING WILL BE INSTALLED PER MANUFACTURERS STANDARDS.

PLAN NOTES

- KEY
- | DESCRIPTION   | DESCRIPTION  |
|---|--|
| 1 WALL MOUNTED OR SEMI-RECESSED FIRE EXTINGUISHER CABINET AND FIRE EXTINGUISHER MOUNT TO P1 AT 45" A.F.F. FIRE EXTINGUISHER TO HAVE MIN. RATING OF 2A100 FOR EVERY 100 SQ. FT. OF FLOOR AREA. TRAVEL DISTANCE TO AN EXTINGUISHER SHALL NOT EXCEED 75 FEET. ALL EXTINGUISHERS SHALL BE CONSPICUOUSLY LOCATED AND READILY ACCESSIBLE. THE TOP OF THE EXTINGUISHER SHALL NOT BE MORE THAN 6'0" ABOVE THE FLOOR AND THE BOTTOM OF THE EXTINGUISHER SHALL NOT BE LESS THAN 4" ABOVE THE FLOOR. | 11 ELECTRICAL PANEL LOCATION. SEE ELECTRICAL DRAWINGS.   |
| 2 ALIGN WALLS.  | 12 WALL PADK. SEE ELECTRICAL DRAWINGS.   |
| 3 MERCHANDISE AREA, PROVIDED BY OWNER.  | 13 48X96" PLYWOOD FIRE-TREATED PHONE BOARD. PAINT ALL 6 SIDES TO MATCH ADJACENT WALL. SEE ELECTRICAL DRAWINGS. |
| 4 SECURITY MONITOR, PROVIDED BY OWNER.  | 14 ROOF HATCH - 30X30" BY 8" O.C. ALIGN WITH CMU BELOW. COORDINATE WITH STRUCTURAL DRAWINGS. SEE DETAIL A402.  |
| 5 6" DIA. CONCRETE FILLED PIPE BOLLARD 4'0" TALL W/ ROUNDED CAP AND PAINTED SAFETY YELLOW. SEE DETAIL ON SHEET FRAMA.   | 15 ROOFTOP CONDENSING UNITS. SEE MECHANICAL DRAWINGS.  |
| 6 JANITOR SINK OR WALL CONTRACTOR TO PROVIDE FIBERGLASS REINFORCED PANEL FROM TOP OF SINK TO BOTTOM OF FAUCET ON BOTH WALLS ADJACENT TO SINK. PROVIDE 3/4" LONG FLEXIBLE HOSE AND HOSE CLAMP. SEE PLUMBING DRAWINGS FOR ADDITIONAL INFORMATION.   | 16 TAPERED INSULATION CRICKET TO ACHIEVE POSITIVE DRAINAGE.  |
| 7 WATER HEATER LOCATION. SEE PLUMBING DRAWINGS.   | 17 COMBINATION ROOF AND OVERFLOW DRAIN. INSTALL PER MANUFACTURERS INSTRUCTIONS. SEE PLUMBING DRAWINGS.         |
| 8 H2O DRINKING FOUNTAINS. SEE PLUMBING DRAWINGS.  | 18 GALVALLUM PANEL PER STORAGE UNIT MANUFACTURER.  |
| 9 ROOF ACCESS LADDER - GALVANIZED PAINTED PULP VERTICAL LADDER W/ 1/2" ZIP" FLAT BAR RAILS 20" APART W/ 1/2" X 1/2" WELDED BRACES AT 12" O.C. AT LEAST 7' CLEAR FROM THE WALL. ANCHOR WITH W/ 1/2" X 2 1/2" L-SHAPED FLAT BAR AT 4" O.C. MAXIMUM. GALVANIZED.   | 19 PRE-ENGINEERED PREFINISHED ALUMINUM CANOPY.   |
| 10 2X2 OR ROLLED WALKWAY PROTECTION, LAYOUT TO AND AROUND ROOFTOP EQUIPMENT. SEE DETAIL A242.   | 20 PROPOSED FIRE RISER LOCATION.   |
| 11 ELECTRICAL PANEL LOCATION. SEE ELECTRICAL DRAWINGS.  | 21 SERVER DATA LOCATION. PROVIDED BY OWNER.  |
| 12 WALL PADK. SEE ELECTRICAL DRAWINGS.  | 22 PROPOSED SIGN LOCATION. TO BE PERMITTED SEPARATELY.   |
| 13 48X96" PLYWOOD FIRE-TREATED PHONE BOARD. PAINT ALL 6 SIDES TO MATCH ADJACENT WALL. SEE ELECTRICAL DRAWINGS.  | 23 ROOF DRAIN OVER-LOW LAMBS TONGUE. LOCATE MIN. 12" ABOVE GRADE. SEE PLUMBING DRAWINGS.                       |
| 14 ROOF HATCH - 30X30" BY 8" O.C. ALIGN WITH CMU BELOW. COORDINATE WITH STRUCTURAL DRAWINGS. SEE DETAIL A402.   | 24 ROOF DRAIN CLEANOUT ACCESS COVER. LOCATE MIN. 12" ABOVE GRADE. SEE PLUMBING DRAWINGS.                       |
| 15 ROOFTOP CONDENSING UNITS. SEE MECHANICAL DRAWINGS.   | 25 WALL COVER OR EXHAUST FAN. SEE MECHANICAL DRAWINGS.   |
| 16 TAPERED INSULATION CRICKET TO ACHIEVE POSITIVE DRAINAGE.   | 26 2" REVERSAL.  |
| 17 COMBINATION ROOF AND OVERFLOW DRAIN. INSTALL PER MANUFACTURERS INSTRUCTIONS. SEE PLUMBING DRAWINGS.  | 27 MASONRY CONTROL JOINT. SEE STRUCTURAL DRAWINGS.   |

WALL TYPES

- NOTES:
- WALL TYPE #
  - STORAGE METAL PARTITION BY OTHERS
  - STANDARD CMU. SEE WALL SECTIONS
  - SPLIT FACE CMU. SEE WALL SECTIONS
- ALL WALLS TO EXTEND 6" ABOVE CEILING HEIGHT, UNLESS OTHERWISE NOTED.
  - PROVIDE MOISTURE RESISTANT GYPSUM WALL BOARD IN ALL WET AREAS.
  - CONSTRUCT ALL STUD WALL FRAMING TO MEET MANUFACTURERS MINIMUM REQUIREMENTS FOR FLOOR AND CEILING ATTACHMENT BASED ON PER LATERAL LOADING AND LOAD DEFLECTION, UNLESS OTHERWISE APPROVED. IN NO CASE SHALL THE ATTACHMENT BE LESS THAN THE FOLLOWING:
- A. ALL STEEL STUD RUNNER CHANNELS ATTACHED TO CONCRETE FLOOR SHALL BE FASTENED WITH CONCRETE STUD WALLS, EXPANSION ANCHORS, SH BLOED SCREWS, OR POWERDRIVEN FASTENERS NOT EXCEEDING 24" O.C. AND NO MORE THAN 2" FROM EACH END.
- B. FASTEN STUD PLACES TO RUNNER TRACK WITH ONE 3/8" TYPE 8 PAN HEAD SCREWS ON BOTH SIDES OF STUD FLANGE.
- C. ALL STEEL STUD RUNNER CHANNELS ATTACHED TO SUSPENDED CEILING SHALL BE FASTENED WITH "MOLL"-TYPE EXPANDABLE FASTENERS, TOGGLE BOLTS, CLAMPS, OR SCREWS INTO CHANNELS, SPLINES, "T" RUNNERS, OR OTHER MEMBERS AT A MAXIMUM SPACING OF 48" OR LESS TO MATCH CEILING GRID.
- D. PROVIDE LEVEL 4 FINISH PER ASTM C540 IN OFFICE. PROVIDE LEVEL 3 IN WAREHOUSE AREAS.
- | W1  | W2  | W3  | W4   | W5   | W6   | W7  | W8   | W9   |
|---|---|---|--|--|--|---|--|--|
| 3 5/8" 25 GA. METAL STUDS @ 24" O.C. WITH 5/8" GYPSUM BOARD EACH SIDE. SEE 1A404. | 3 5/8" 25 GA. METAL STUDS @ 24" O.C. WITH 5/8" GYP. BOARD EACH SIDE & ONE LAYER R-11 SOUND BATT INSUL. SEE 2A404. | 3 5/8" 25 GA. METAL STUDS @ 24" O.C. WITH 5/8" GYP. BOARD EACH SIDE & ONE LAYER R-11 SOUND BATT INSUL. EXTEND TO UNDERSIDE OF STRUCTURE. SEE 3A404. | 3 5/8" 25 GA. METAL STUDS @ 24" O.C. WITH (1) LAYER 8/8" TYPE X GYP. BOARD EACH SIDE & ONE LAYER R-11 SOUND BATT INSUL. 1-HR RATED. SEE U-VALUE SHEET A401. SEE 4A404. | 3 5/8" 25 GA. METAL STUDS @ 24" O.C. WITH 5/8" GYP. BOARD ONE SIDE & ONE LAYER R-11 SOUND BATT INSUL. SEE 5A404. | 6" 25 GA. METAL STUDS @ 24" O.C. WITH 5/8" GYP. BOARD EACH SIDE & ONE LAYER OF SOUND BATT INSULATION. SEE 2A404. | 6" 25 GA. METAL STUDS @ 24" O.C. WITH 5/8" GYP. BOARD EACH SIDE & ONE LAYER OF R-11 SOUND BATT INSULATION. EXTEND TO UNDERSIDE OF STRUCTURE. SEE 3A404. | 2 1/2" 25 GA. METAL STUDS @ 24" O.C. W/ 5/8" GYPSUM BOARD ONE SIDE & ONE LAYER OF MIN. R-8 BATT INSULATION. LOCATED 1/2" OFF EXTERIOR WALL. EXTEND TO UNDERSIDE OF STRUCTURE. SEE 6A404. | 2 1/2" 25 GA. METAL STUDS @ 24" O.C. W/ 5/8" GYPSUM BOARD ONE SIDE. LOCATED 1/2" OFF STRUCTURAL COLUMN, OR CONCRETE WALL. SEE 6A404. |
- NEW DOOR AND FRAME. REFER TO DOOR SCHEDULE.  
F1 = FRAME TYPE. SEE SHEET A101 FOR FRAME ELEVATIONS.
- PLAN NOTES SYMBOL

OWNER:  
MC LAND COMPANY LLC.  
4116 OUTER DRIVE  
NASHVILLE, TN 37204  
TEL: 615.578.0245

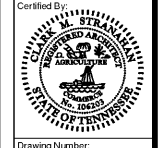


135 W Central Blvd., Suite 340  
Orlando, Florida 32801  
TEL: 407.363.6136  
AUGUST 1997

Revised:

Scale	AS NOTED	Date	Drawn By	Author	Contact For	Checker
		04/04/2019				

BOX STORAGE  
SELF STORAGE  
2100 HAMILTON PLACE BLVD.  
CHATTAHOOGA, TN 37421



Drawing Number:  
**A204**  
Of Sheets  
Job Number:  
A/E Job Number:  
18356

ENLARGED FLOOR PLANS AND NOTES