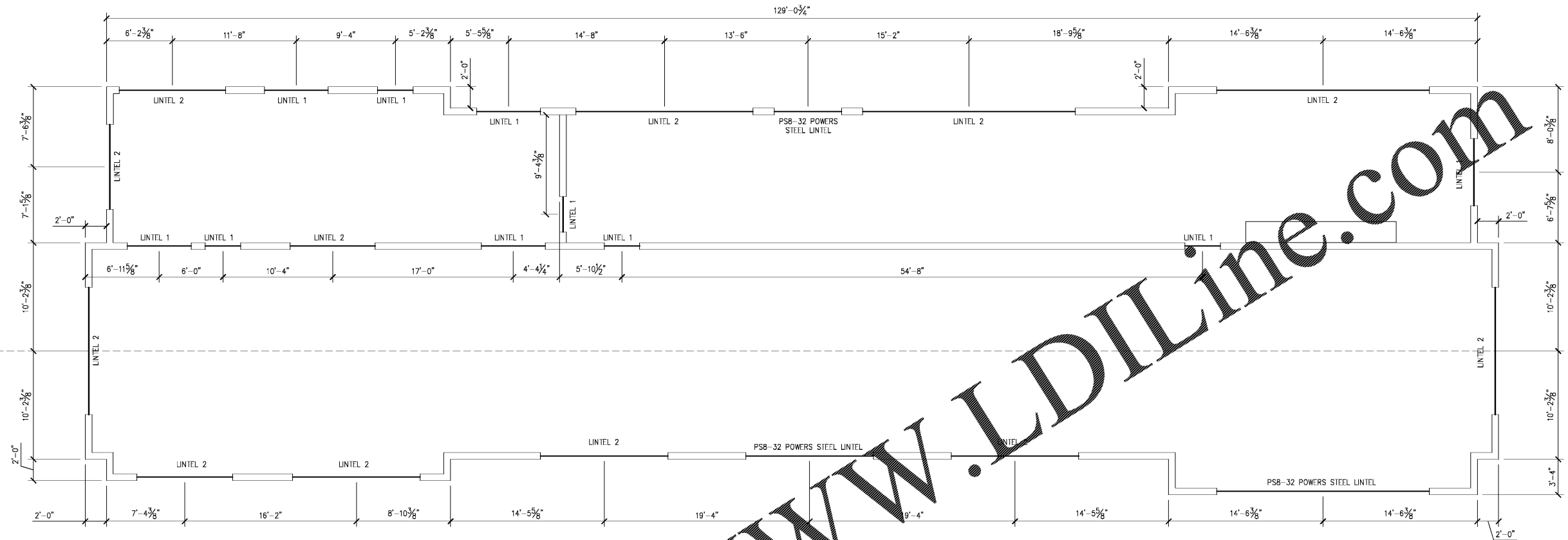




JOB NO.	19-1084
DATE	MARCH 20, 2019
DRAWN	MKG
CHECKED	MHH
COPYRIGHT © 2019 SEWELL AND SEWELL ARCHITECTS, PLLC	

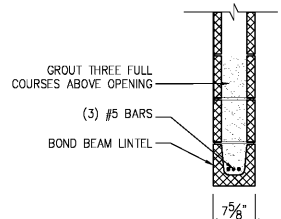
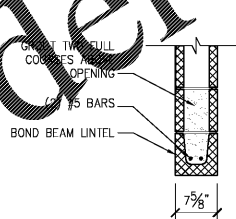


Order Plans @ www.LDILine.com

A STRUCTURAL WALL PLAN
S-1.1 SCALE: 3/16" = 1'-0"

1 LINTEL 1
S-1.1 SCALE: 3/4" = 1'-0"

2 LINTEL 2
S-1.1 SCALE: 3/4" = 1'-0"



1ST FLOOR STRUCTURAL WALL NOTES:

1. WALLS AND OTHER STRUCTURE SHOWN ON THIS DRAWING ARE NECESSARY TO SUPPORT VERTICAL AND LATERAL LOADS. CHANGES TO THESE WALLS OR STRUCTURE SHALL BE COORDINATED WITH THE STRUCTURAL ENGINEER. FOR OTHER WALLS AND COMPLETE WALL ARRANGEMENT SEE ARCHITECTURAL DRAWINGS.
2. DIMENSIONS SHOWN ON THIS DRAWING ARE APPROXIMATE. COORDINATE ACTUAL DIMENSIONS WITH THE ARCHITECTURAL DRAWINGS.
3. TOP OF CMU WALL ELEVATION IS 115'-4" U.N.O. ON PLAN.
4. FOR COMPLETE STRUCTURAL NOTES SEE DRAWING S-0.1.
5. SEE DETAILS 1 AND 2 ON S-1.1 FOR MASONRY LINTEL 1 AND 2 DETAILS, AND DETAIL 3 ON S-1.1 FOR STEEL BEAM LINTEL DETAILS.
6. POWERS STEEL LINTELS MAY BE SUBSTITUTED IF MATCHING BOND BEAM CMU IS NOT AVAILABLE. IF THE USE OF POWERS STEEL LINTELS IS DESIRED, THE LINTEL SELECTION SHALL BE BASED UPON THE MINIMUM GROUT HEIGHT SPECIFIED FOR EACH LINTEL TYPE ON THESE DRAWINGS AND SHALL CONFORM TO POWERS 2,000PSI INSTALLATION PROCEDURES, SPECIFICATIONS, DETAILS & DRAWINGS, U.N.O. ON THE PLAN.

