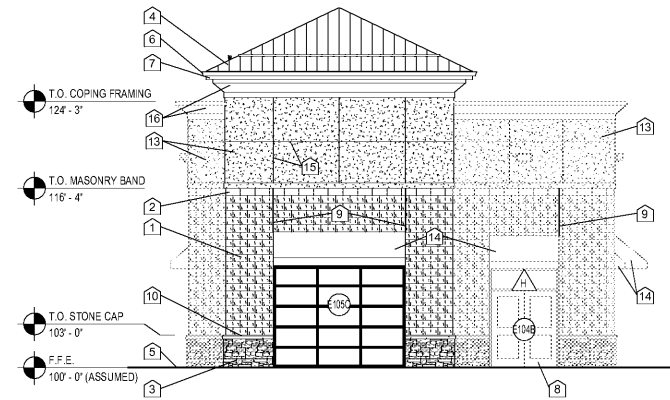
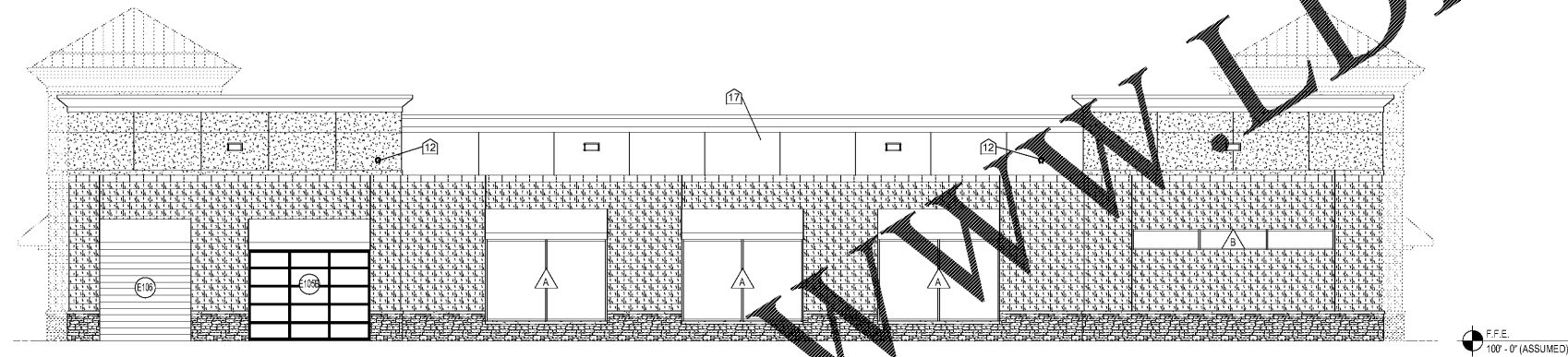


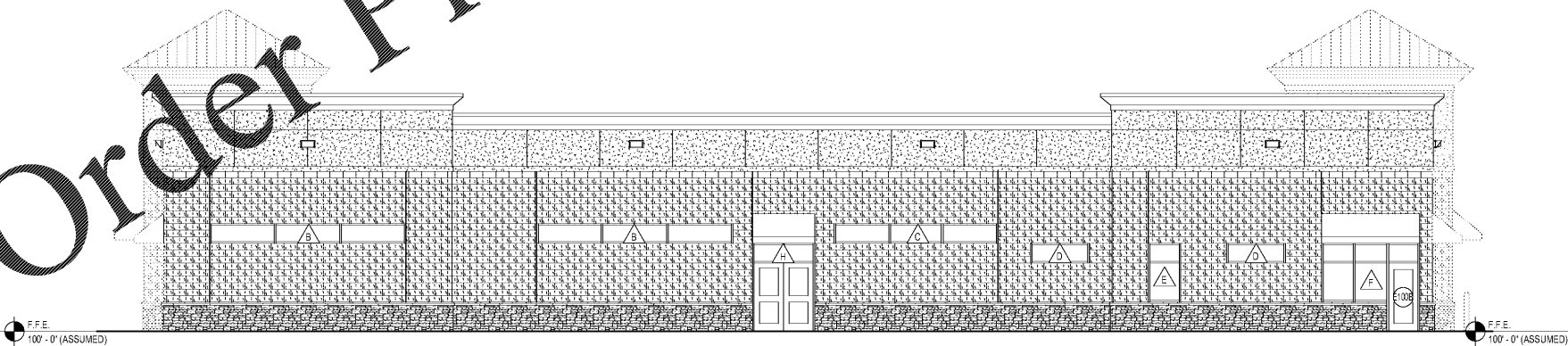
2 REAR ELEVATION
1/8" = 1'-0"



1 FRONT ELEVATION
1/8" = 1'-0"



3 LEFT SIDE ELEVATION
1/8" = 1'-0"



4 RIGHT SIDE ELEVATION
1/8" = 1'-0"

WWW.LDILine.com

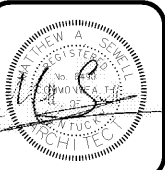
Order Plans @

GENERAL ELEVATION NOTES

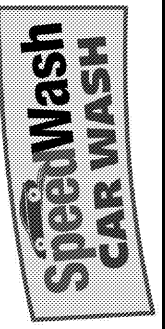
- A. BUILDING ELEVATIONS SHOWN ON THIS DRAWING ARE INTENDED FOR GENERAL REFERENCE PURPOSES ONLY. REFER TO REFERENCED SECTIONS AND DETAILS FOR MORE FULLY DESCRIBED CONDITIONS AND REQUIREMENTS.
- B. MATERIAL INDICATIONS AND DESCRIPTIONS, VERTICAL AND OTHER DIMENSIONS SHOWN ON ONE BUILDING ELEVATION APPLY TO OTHER BUILDING ELEVATIONS WHERE SHOWN, U.N.O.
- C. LINES REPRESENTING PAVING AND FINISH GRADES ARE APPROXIMATE AND ARE SHOWN FOR REFERENCE PURPOSES ONLY. REFER TO SITE PLANS FOR SPECIFIC GRADE AND SPOT ELEVATIONS AT EACH RESPECTIVELY.
- D. REFER TO FLOOR PLANS FOR SPECIFIC ALUMINUM WINDOW TYPES AND WINDOW ELEVATIONS.
- E. ALL EXPOSED EXTERIOR METAL SUCH AS FLASHINGS, COPINGS, GUTTERS DOWNSPOUTS SHALL RECEIVE SHOP APPLIED FINISH COATING.
- F. MEP ITEMS ARE NOT SHOWN FOR CLARITY. CONTRACTOR SHALL COORDINATE ALL MEP ITEMS AS REQUIRED.
- G. REFER TO FLOOR PLANS FOR DOOR LOCATIONS AND DOOR SCHEDULE FOR FULL EXTENT AND COMPLETE DESCRIPTION OF DOOR AND FRAME TYPES.
- H. LOCATIONS OF CONTROL JOINTS (CJ) IN MASONRY WALLS ARE SHOWN ON THIS DRAWING. SEE REFERENCED DETAILS FOR SPECIFIC REQUIREMENTS AT RESPECTIVE LOCATIONS.

ELEVATION KEY NOTES

- 1. 8" (NOM.) SPLIT-FACE CMU (PAINT).
- 2. 8" (NOM.) SMOOTH-FACE CMU (PAINT).
- 3. ADHERED STONE VENEER.
- 4. ROOF ASSEMBLY TYPE 'A'.
- 5. FINISH GRADE VARIES, REFER TO CIVIL DRAWINGS.
- 6. PRE-FINISHED S.M. 5" RECTANGULAR GUTTER. REFER TO ROOF DETAILS.
- 7. PRE-FINISHED S.M. FASCIA. REFER TO ROOF DETAILS.
- 8. PRE-FINISHED ALUMINUM STOREFRONT SYSTEM.
- 9. EXPANSION / CONTROL JOINT. PROVIDE BACKER ROD AND SEALANT. CONT. TYPICAL 4'-0" FROM ALL CORNERS AND AT INSIDE CORNERS. REFER TO BUILDING ELEVATIONS FOR ADDITIONAL LOCATIONS.
- 10. PRECAST CONCRETE CAP. REFER TO WINDOW DETAILS.
- 11. 6"x8" TALL CONCRETE FILLED BOLLARDS AT EACH SIDE OF OVERHEAD DOOR (PAINT). REFER TO DETAIL 1/A5.1.
- 12. OVERFLOW DISCHARGE WITH LAMBS TONGUE NOZZLE.
- 13. DRAINABLE EIFS SYSTEM PROVIDE BEVEL AT EDGES. REFER TO ELEVATION AND DETAILS FOR EIFS THICKNESS.
- 14. VINYL AWNING OVER ALUMINUM FRAME. REFER TO ROOF PLAN FOR SIZE. SMOOTH-FACE CMU BEHIND AWNINGS.
- 15. EIFS REVEAL JOINT PER EIFS MANUFACTURER'S STANDARD D.T.S.
- 16. EIFS CORNICE. REFER TO ROOF DETAILS.
- 17. ACM METAL WALL PANEL OVER BUILDING WRAP ON 3/4" EXTERIOR GRADE PLYWOOD SHEATHING.



6014 BARDSTOWN ROAD
LOUISVILLE, KY 40291



SEWELL AND SEWELL ARCHITECTS
996 WILKINSON TRACE, SUITE B4
BOWLING GREEN, KY 42103
PH: 270.904.3388
www.sewellarchitects.com

EXTERIOR BUILDING ELEVATIONS

JOB NO. 1908
DATE MARCH 20, 2019
DRAWN MAS
CHECKED NBS
COPYRIGHT © 2019 SEWELL AND SEWELL ARCHITECTS, PLLC

SHEET
A3.0