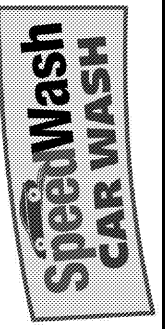


6014 BARDSTOWN ROAD
LOUISVILLE, KY 40291

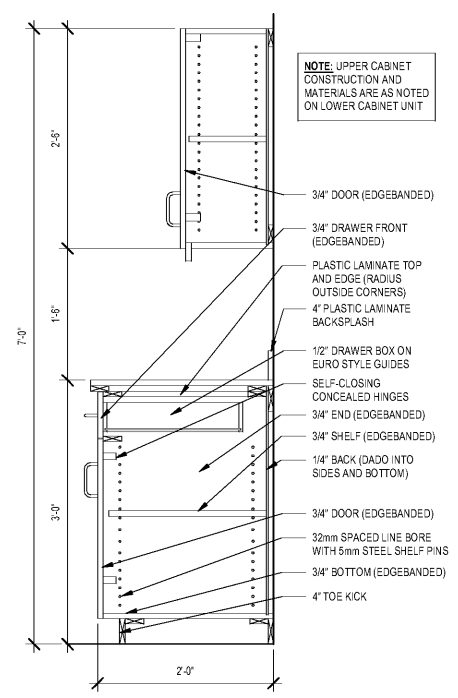


SEWELL AND SEWELL
ARCHITECTS
996 WILKINSON TRACE, SUITE B4
BOWLING GREEN, KY 42103
PH: 270.994.3388
www.sewellarchitects.com

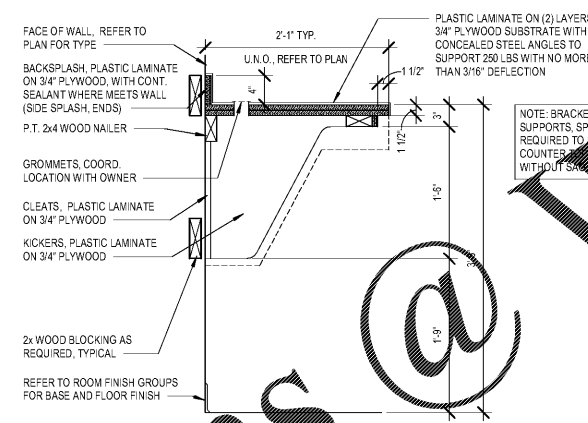
DETAILS

JOB NO. 1908
DATE MARCH 20, 2019
DRAWN MAS
CHECKED NBS
COPYRIGHT © 2019
SEWELL AND SEWELL
ARCHITECTS, PLLC

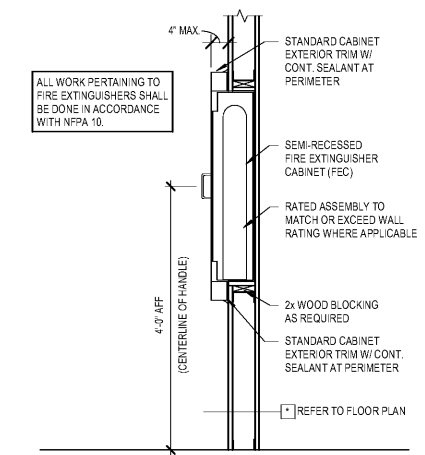
SHEET
A5.1



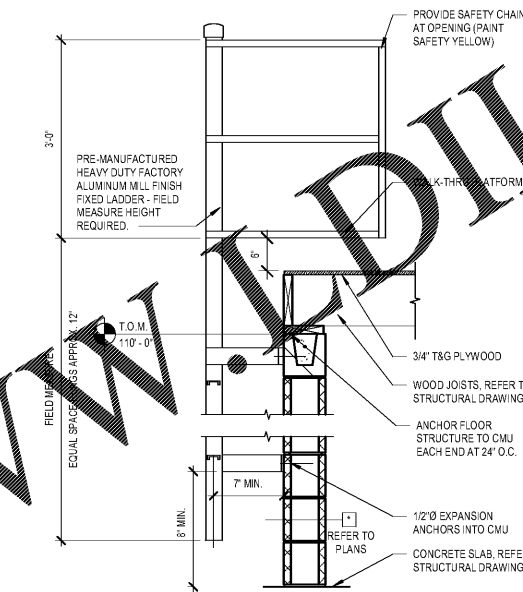
8 KITCHEN CABINET DETAIL
1" = 1'-0"



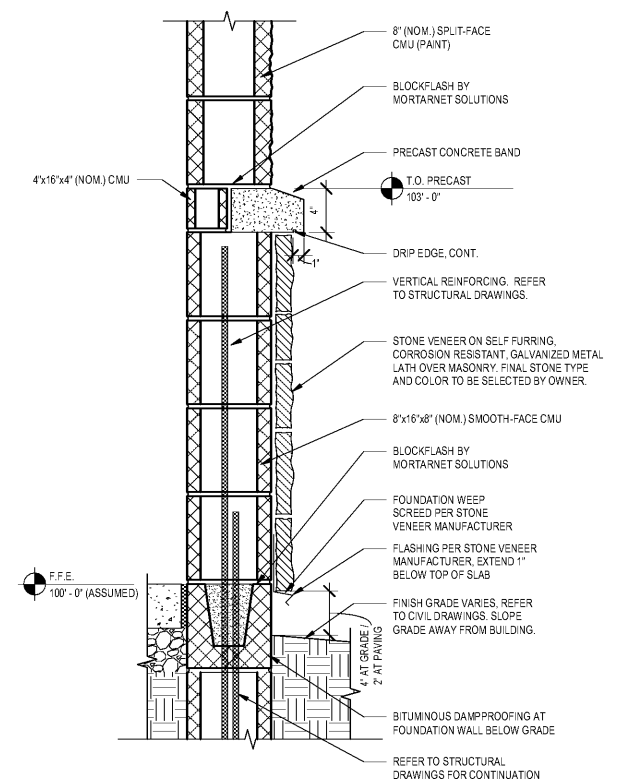
9 COUNTERTOP DETAIL (WALL MOUNTED)
1'-0" = 1'-0"



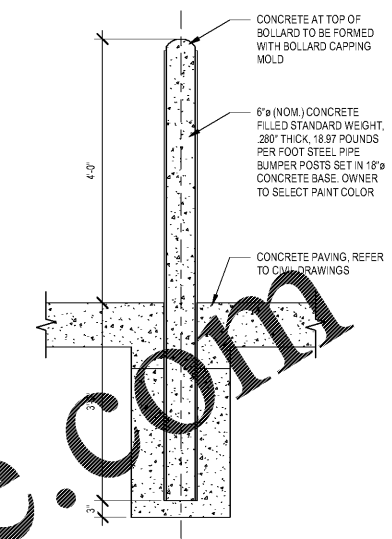
5 FIRE EXTINGUISHER CABINET DETAIL
3/4" = 1'-0"



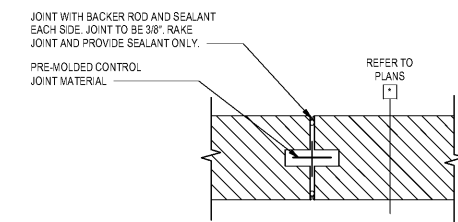
6 TYPICAL LADDER
3/4" = 1'-0"



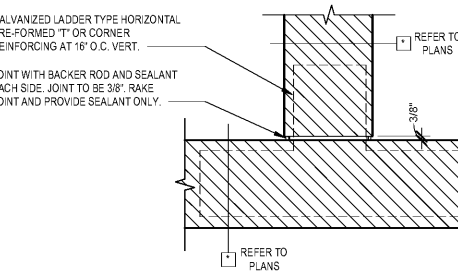
7 STONE VENEER TRANSITION DETAIL
1 1/2" = 1'-0"



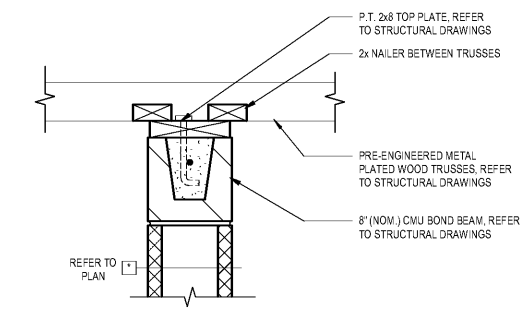
1 BOLLARD DETAIL
3/4" = 1'-0"



2 TYPICAL MASONRY CONTROL JOINT
1 1/2" = 1'-0"



3 TYPICAL WALL INTERSECTION DETAIL
1 1/2" = 1'-0"



4 TYPICAL INTERIOR CMU PARTITION
1 1/2" = 1'-0"

Order Plans @

WWW.DILine.com