

DOOR & FRAME SCHEDULE

MARK	PANEL				FRAME				DETAILS			RATING	HARDWARE SET	SIGN TYPE	REMARKS		
	WIDTH	HEIGHT	PAIR	NEW EXSTG	TYPE	MATERIAL	FINISH	UNDER CUT	GLAZING	TYPE	MATERIAL					FINISH	DEPTH
D	6'-0"	7'-0"			F	HM	PNT			03	HM	PNT	8 1/4"				
D1	3'-0"	7'-0"		Yes	F	WD	PNT			01	HM	PNT	8 1/4"		DH5	DJ2	
D2	3'-0"	7'-0"		Yes	F	WD	PNT			01	HM	PNT	8 1/4"		DH5	DJ2	
D3	3'-0"	7'-0"		Yes	F	WD	PNT			01	HM	PNT	8 1/4"		DH5	DJ2	
D4	6'-0"	7'-0"	Yes		BDT												
D5	3'-0"	7'-0"		Yes	F	WD	PNT			01	HM	PNT	8 1/4"		DH5	DJ2	
D6	3'-0"	7'-0"		Yes	F	WD	PNT			01	HM	PNT	8 1/4"		DH5	DJ2	
D7	3'-0"	7'-0"		Yes	F	WD	PNT			01	HM	PNT	8 1/4"		DH5	DJ2	
D8	12'-0"	7'-0"			AS	ALUM	AA		TEMP		ALUM	AA		TEMP			
D9	3'-0"	7'-0"			F	HM	PNT			03	HM	PNT	8 1/4"				
E1	3'-0"	6'-8"		No	Yes	WD	PNT			01	HM	PNT					DS2
E2	3'-0"	6'-8"		Yes	Yes	WD	PNT			01	HM	PNT					DS3
E3	3'-0"	6'-8"		Yes	Yes	HM	PNT			03	HM	PNT					
E4	3'-0"	6'-8"		Yes	Yes	HM	PNT			03	HM	PNT					
E5	6'-0"	8'-0"		Yes	Yes	STL	PNT					PNT					
E6	11'-8"	7'-0"		Yes	Yes	ALUM	AA				ALUM	AA					

DOOR SCHEDULE ABBREVIATIONS

- AA ANODIZED ALUMINUM (CLEAR)
- ALUM ALUMINUM STOREFRONT
- DS DOUBLE SLIDING
- EXSTG EXISTING
- GL GLASS
- HM HOLLOW METAL
- PF PREFINISHED (CLEAR)
- PNT PAINT
- TR TRAFFIC
- TEMP TEMPERED
- WD WOOD
- SF SATIN FINISH
- SS SINGLE SLIDING
- MTL METAL
- OH OVER HEAD

GENERAL HARDWARE NOTE

- VERIFY ALL HARDWARE PRIOR TO ORDERING
- USE INDICATED MANUFACTURERS OR EQUAL FOR HARDWARE ORDERING
- HARDWARE FINISHES HERE ARE SHOWN FOR CLARITY PURPOSE AND REPRESENT DESIGN INTENT.
- GENERAL CONTRACTOR TO VERIFY IN FIELD WITH CLIENT ALL FINISHES.

MANUFACTURER'S ABBREVIATIONS

- D DORMA
- NG NEW GUARD
- SC SCHLAGE
- ST STANLEY
- RW ROCKWOOD

DOOR HARDWARE SCHEDULE

HARDWARE GROUP NO. HS-01:
PROVIDE MANUFACTURER'S HARDWARE EQUIV. TO PUSH BAR, PULL AND KEYS.

QTY	DESCRIPTION	MODEL NO	FINISH	MFR	COMMENTS
1EA	HINGE	FBB1794 1/2 X 4 1/2	652	ST	
1EA	LOCK SET	AL53PD-SAT	626	SC	
1EA	WALL STOP	409	630	RW	
3EA	SILENCER	608	GRY	RWE	

HARDWARE GROUP NO. HS-03:
PROVIDE EACH SGL DOOR(S) WITH THE FOLLOWING:

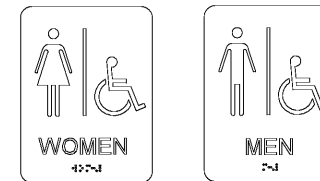
QTY	DESCRIPTION	MODEL NO	FINISH	MFR	COMMENTS
3EA	HINGE	FBB1794 1/2 X 4 1/2	652	ST	
1EA	PRIVACY SET	AL40S-SAT	626	SC	
1EA	WALL STOP	409	630	RW	
3EA	SILENCER	608	GRY	RWE	

HARDWARE GROUP NO. HS-04:
PROVIDE EACH SGL DOOR(S) WITH THE FOLLOWING:

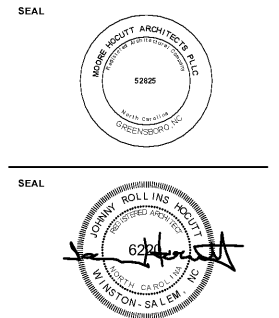
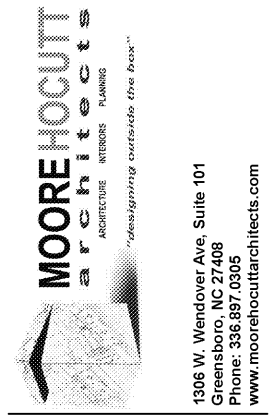
QTY	DESCRIPTION	MODEL NO	FINISH	MFR	COMMENTS
6EA	HINGE	FBB1794 1/2 X 4 1/2	652	ST	
1EA	EXIT DEVICE	9300 X YR23	630	D	
1SET	FLUSH BOLTS		630	RW	
1EA	CLOSER	P8616	689	D	
3EA	SILENCER	608	GRY	RWE	

NEW BREAK ROOM CASE WORK NOTES

- ALL CABINETS ARE TO BE CONSTRUCTED WITH PLASTIC LAMINATE ON ALL EXTERIOR EXPOSED SURFACES AND MELAMINE ON INTERIOR EXPOSED SURFACES.



DOOR SIGN TYPES
3" = 1'-0"



4/3/2019

REVISIONS	
No.	Description

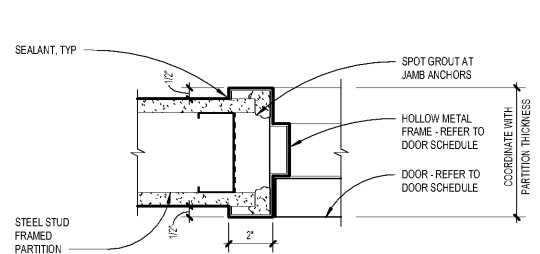
Designed By: MLM
 Drawn By: GME
 Checked By: JRH
 Date: 4/3/2019

SCHEDULES & DETAILS

Project No. 1910
 SHEET NO.

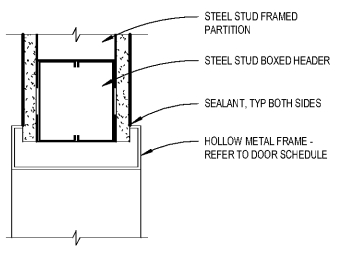
A201

ISSUED FOR CONSTRUCTION
 4/3/2019



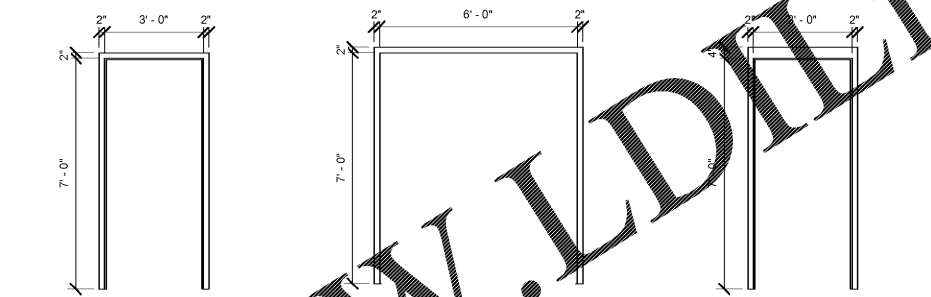
DJ2 - DOOR JAMB DTL
3" = 1'-0"

DOOR JAMB DETAILS



DH5 - DOOR HEAD DTL
3" = 1'-0"

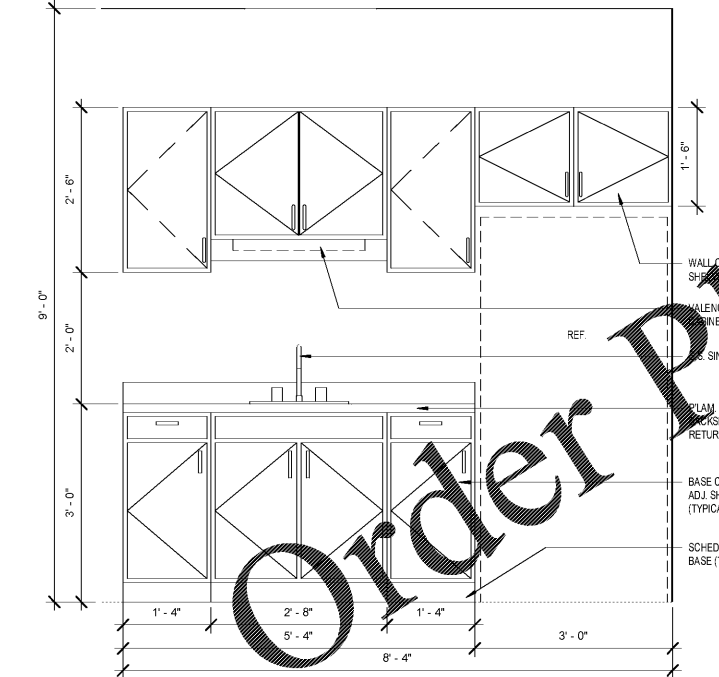
DOOR HEAD DETAILS



DOOR FRAME TYPES
 01 SINGLE DOOR FRAME HOLLOW METAL
 02 DOUBLE DOOR FRAME HOLLOW METAL
 03 SINGLE DOOR FRAME HOLLOW METAL

DOOR FRAME TYPES

NOTE: COORDINATE ALL SIZES WITH SCHEDULED DOOR PANEL SIZES



NEW BREAK ROOM CASE WORK
 SCALE: 3/4" = 1'-0"
 5 A201

DOOR PANEL TYPES
 F FLUSH BDT BI-DIRECTIONAL TRAFFIC AS AUTOMATIC SLIDING

DOOR PANEL TYPES