

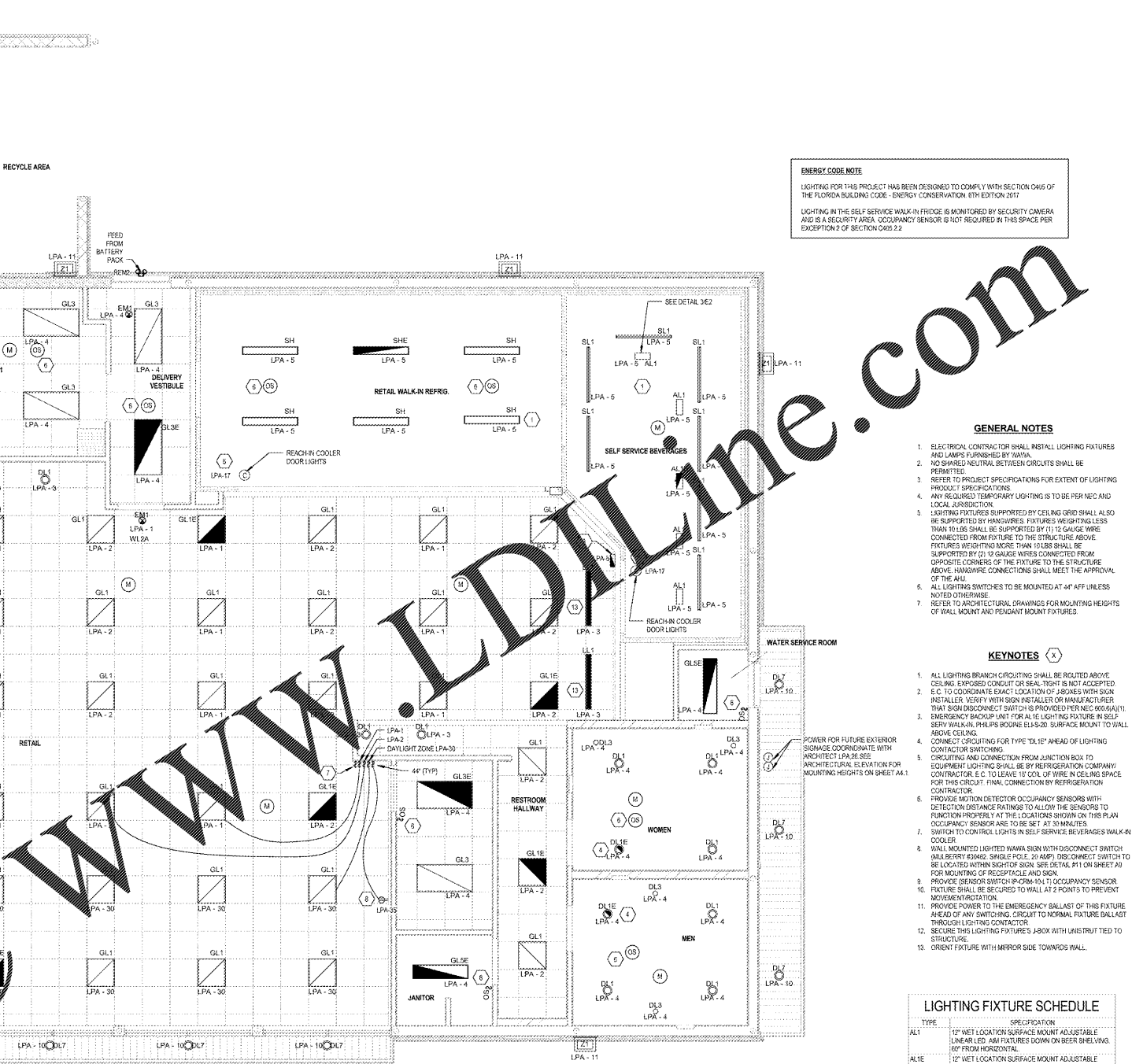
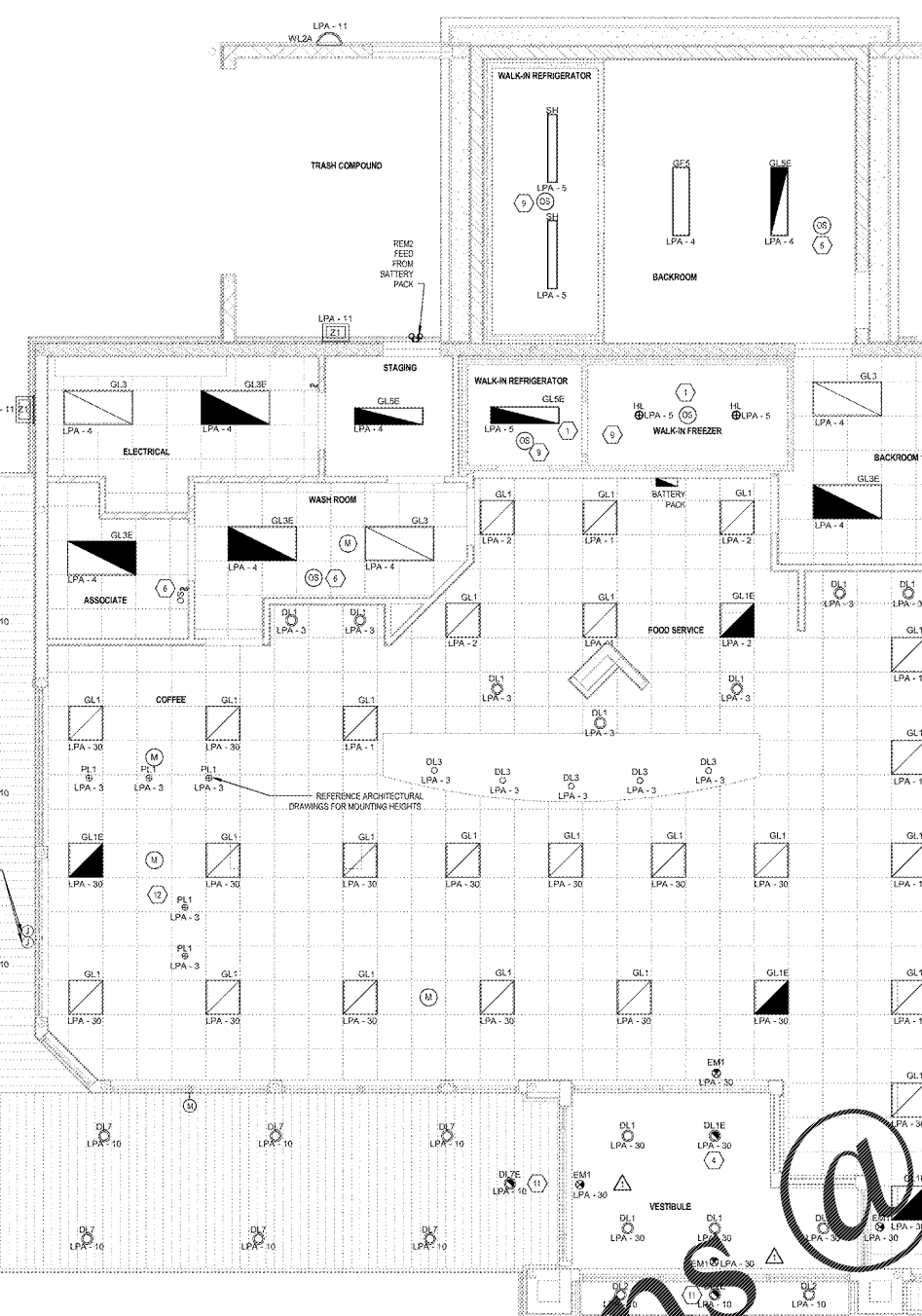
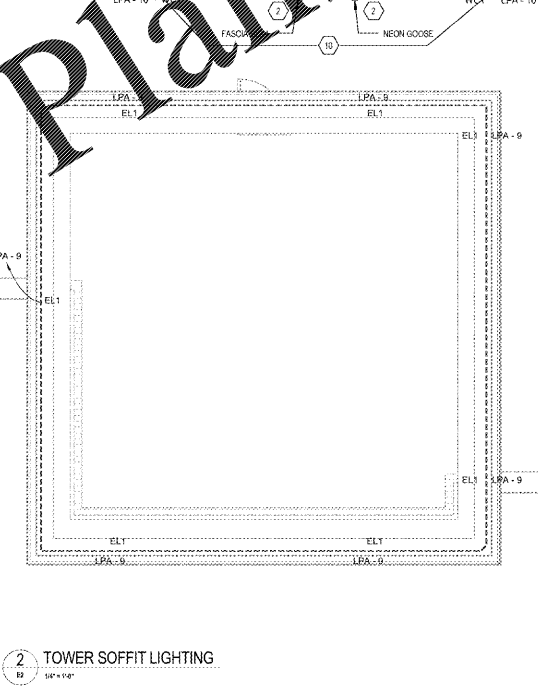
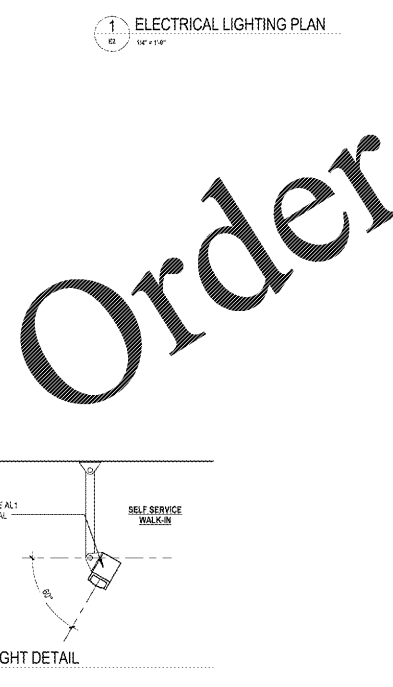
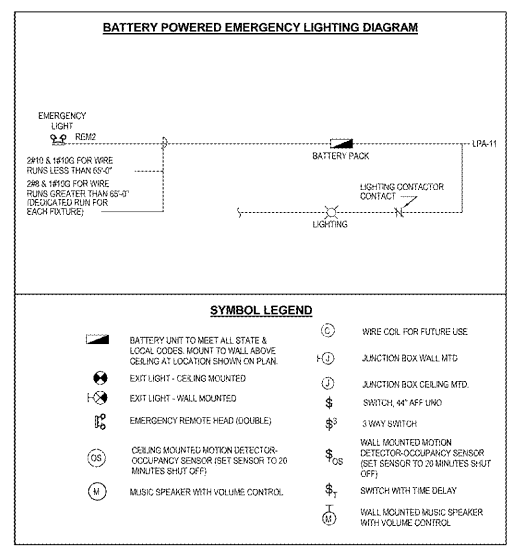
ENERGY CODE NOTE
 LIGHTING FOR THIS PROJECT HAS BEEN DESIGNED TO COMPLY WITH SECTION 609.5 OF THE FLORIDA BUILDING CODE - ENERGY CONSERVATION, 8TH EDITION 2017.
 LIGHTING IN THE SELF SERVICE WALK-IN FRIDGE IS MONITORED BY SECURITY CAMERA AND IS A SECURITY AREA. OCCUPANCY SENSOR IS NOT REQUIRED IN THIS SPACE PER EXCEPTION 2 OF SECTION 609.2.2

- GENERAL NOTES**
- ELECTRICAL CONTRACTOR SHALL INSTALL LIGHTING FIXTURES AND LAMPS PURSUANT TO THE SCHEDULE.
 - NO SHARED NEUTRAL BETWEEN CIRCUITS SHALL BE PERMITTED.
 - REFER TO PROJECT SPECIFICATIONS FOR EXTENT OF LIGHTING PRODUCT SPECIFICATIONS.
 - ANY REQUIRED TEMPORARY LIGHTING IS TO BE PER NEC AND LOCAL JURISDICTION.
 - LIGHTING FIXTURES SUPPORTED BY CEILING GRID SHALL ALSO BE SUPPORTED BY HANGARS. FIXTURES WEIGHTING LESS THAN 10 LB SHALL BE SUPPORTED BY 11" O.G. GAUGE WIRE CONNECTED FROM FIXTURE TO THE STRUCTURE ABOVE. FIXTURES WEIGHTING MORE THAN 10 LB SHALL BE SUPPORTED BY (2) 1/2" GAUGE WIRES CONNECTED FROM OPPOSITE CORNERS OF THE FIXTURE TO THE STRUCTURE ABOVE. HANGAR CONNECTIONS SHALL MEET THE APPROVAL OF THE A/E.
 - ALL LIGHTING SWITCHES TO BE MOUNTED AT 48" UNLESS NOTED OTHERWISE.
 - REFER TO ARCHITECTURAL DRAWINGS FOR MOUNTING HEIGHTS OF WALL MOUNT AND PENDANT MOUNT FIXTURES.

- KEYNOTES**
- ALL LIGHTING BRANCH CIRCUITING SHALL BE ROUTED ABOVE CEILING. EXPOSED CONDUIT OR SEAL-TIGHT IS NOT ACCEPTED. E.C. TO COORDINATE EXACT LOCATION OF JUNCTION BOX WITH SIGN FLETCHER. VERIFY WITH SIGN INSTALLER OR MANUFACTURER THAT SIGN DISCONNECT SWITCH IS PROVIDED PER NEC 600.8(A)(1).
 - EMERGENCY BACKUP UNIT FOR ALL LIGHTING FIXTURES IN SELF SERVICE WALK-IN FRIDGE SHALL BE SURFACE MOUNT TO WALL ABOVE CEILING.
 - CONNECT CIRCUITING FOR TYPE "DLIE" AHEAD OF LIGHTING CONTRACTOR SWITCHING.
 - CIRCUITING AND CONNECTION FROM JUNCTION BOX TO EQUIPMENT LIGHTING SHALL BE BY REFRIGERATION COMPANY. CONTRACTOR, E.C. TO LEAVE 1/2" COIL OF WIRE IN CEILING SPACE FOR THIS CIRCUIT. FINAL CONNECTION BY REFRIGERATION CONTRACTOR.
 - PROVIDE MOTION DETECTOR OCCUPANCY SENSORS WITH DETECTION DISTANCE RATING TO ALLOW THE SENSORS TO FUNCTION PROPERLY AT THE LOCATIONS SHOWN ON THIS PLAN. OCCUPANCY SENSOR ARE TO BE SET AT 30 MINUTES.
 - SWITCH TO CONTROL LIGHTS IN SELF SERVICE BEVERAGES WALK-IN COOLER.
 - WALL MOUNTED LIGHTED WALK-IN SIGN WITH DISCONNECT SWITCH SHALL BEYOND ROOM. SINGLE POLE (2) AMP DISCONNECT SWITCH TO BE LOCATED WITHIN SIGHT OF SIGN. SEE DETAIL #11 ON SHEET A3 FOR MOUNTING OF RECEIPT GLASS AND SIGN.
 - PROVIDE SENSOR SWITCH (N-CRM-101) OCCUPANCY SENSOR. FIXTURE SHALL BE SECURED TO WALL AT 2 POINTS TO PREVENT MOVEMENT/ROTATION.
 - PROVIDE POWER TO THE EMERGENCY BALLAST OF THIS FIXTURE AHEAD OF ANY SWITCHING. CIRCUIT TO NORMAL FIXTURE BALLAST THROUGH LIGHTING CONTRACTOR.
 - SECURE THIS LIGHTING FIXTURE'S J-BOX WITH UNISTRUT TIED TO STRUCTURE.
 - ORIENT FIXTURE WITH MIRROR SIDE TOWARDS WALL.

LIGHTING FIXTURE SCHEDULE

TYPE	SPECIFICATION
AL1	12" WET LOCATION SURFACE MOUNT ADJUSTABLE LINEAR LED. AM FIXTURES DOWN ON BEER SHELVING. 60" FROM HORIZONTAL.
AL1E	12" WET LOCATION SURFACE MOUNT ADJUSTABLE LINEAR LED WITH REMOTE EMERGENCY BACKUP. POWER AM FIXTURE DOWN ON BEER SHELVING.
DL1	RECESSED 4" LED DOWNLIGHT DAMP LOCATION.
DL1E	RECESSED 4" LED DOWNLIGHT DAMP LOCATION. EMERGENCY BATTERY BACKUP.
DL2	RECESSED 4" LED DOWNLIGHT ADJUSTABLE LAMP ANGLE DAMP LOCATION. EMERGENCY BATTERY BACKUP.
DL2E	RECESSED 4" LED DOWNLIGHT DAMP LOCATION. EMERGENCY BATTERY BACKUP.
DL3	RECESSED 4" LED DOWNLIGHT DAMP LOCATION. 1 INCH TRIM RING.
DL7	RECESSED 4" LED DOWNLIGHT DAMP LOCATION. EMERGENCY BATTERY BACKUP. 1 INCH TRIM RING.
DL7E	RECESSED 4" LED DOWNLIGHT DAMP LOCATION. EMERGENCY BATTERY BACKUP. 1 INCH TRIM RING. WET LOCATION LED MODULES WITH REMOTE POWER SUPPLY.
EL1	WET LOCATION LED ASYMMETRIC WALL GRAZER WITH INTEGRAL POWER SUPPLY (ROOF). AM FIXTURES UP ON WALL ABOVE WINDOWS. 30" FROM HORIZONTAL.
EL3	WET LOCATION LED ASYMMETRIC WALL GRAZER WITH INTEGRAL POWER SUPPLY (ROOF). AM FIXTURES UP ON WALL ABOVE WINDOWS. 12" FROM HORIZONTAL.
EM1	POLYCARBONATE EXIT.
GFS	6 X 4 SURFACE MOUNT LENSED LED. EMERGENCY BATTERY PACK.
GL1	2 X 2 RECESSED LED DIRECT/INDIRECT.
GL1E	2 X 2 RECESSED LED DIRECT/INDIRECT. EMERGENCY BATTERY PACK.
GL3	2 X 4 RECESSED LED DIRECT/INDIRECT.
GL3E	2 X 4 RECESSED LED DIRECT/INDIRECT AND EMERGENCY POWER BATTERY.
GLSE	4 X 4 SURFACE MOUNT LENSED LED. EMERGENCY BATTERY PACK.
HL	VAPOR LIGHT CEILING SURFACE MOUNT.
SL1	1 X 4 RECESSED LED LINEAR WALL WASHER.
PL1	2" TRANSFER PENDANT WITH WHITE ACRYLIC DIFFUSER AND SCREW IN LED LAMP WITH ESCUTCHEON PLATE FROM BATTERY PACK. (SEE DIAGRAM THIS SHEET).
REM2	WET LOCATION EMERGENCY LAMP (DUAL HEAD) FEED FROM BATTERY PACK. (SEE DIAGRAM THIS SHEET).
RF	WALL MOUNTED LED WET LOCATION FIXTURE WITH GUARD. FOR USE IN ROOF POCKET SEE DRAWING.
SH	GASKETED LED WRAP AROUND UL WET LABEL WITH LOW TEMPERATURE BALLAST.
SHL	GASKETED LED WRAP AROUND UL WET LABEL WITH LOW TEMPERATURE BALLAST AND EMERGENCY BATTERY PACK WITH CHARGER WITH INVERTER.
SL2	4" WET LOCATION SURFACE MOUNT LENSED LED.
W1C1	WET LOCATION EXTERIOR DECORATIVE WALL SCULPTURE.
WL2A	WET LOCATION LED OUTDOOR WALL MOUNTED AREA LIGHT WITH GLARE SHIELDS.
Z1	WET LOCATION LED OUTDOOR WALL MOUNTED AREA LIGHT WITH GLARE SHIELDS.



Cuhaci & Peterson
 Architects
 Engineers
 Planners

1925 Prospect Avenue, Orlando, FL 32814
 407-835-1111

CLIENT NAME
 WAWA
 260 WEST BALTIMORE PIKE
 WAWA, PENNSYLVANIA 19063

PROJECT NAME
 WAWA F110L 2018.01 STORE #5337 - MRC
 SE MARICAMP RD. & SE 24th ST.
 OCALA, FL

SHEET TITLE
 LIGHTING PLAN

PROJECT NO. 217050
DATE 08/04/2017
DESIGNER JAW
DRAWN JAW
CHECKED JAW

Revision Schedule

No.	DATE	DESCRIPTION
1 <td>07/26/2017 <td>PERMIT COMMENTS</td> </td>	07/26/2017 <td>PERMIT COMMENTS</td>	PERMIT COMMENTS
2 <td>08/07/2017 <td>REV. PERMIT SET</td> </td>	08/07/2017 <td>REV. PERMIT SET</td>	REV. PERMIT SET
3 <td>08/07/2017 <td>REV. PERMIT SET</td> </td>	08/07/2017 <td>REV. PERMIT SET</td>	REV. PERMIT SET
4 <td>08/07/2017 <td>REV. PERMIT SET</td> </td>	08/07/2017 <td>REV. PERMIT SET</td>	REV. PERMIT SET
5 <td>08/07/2017 <td>REV. PERMIT SET</td> </td>	08/07/2017 <td>REV. PERMIT SET</td>	REV. PERMIT SET

E2