

1 CANOPY ELECTRICAL REFLECTED CEILING PLAN
01 10' x 14'

GASOLINE CONDUIT REQUIREMENTS:

(1) 1" GRG SPARE TO COLUMN A OR C AS DICTATED BY FUEL CONDUIT LAYOUT (SEE SHEET CE1)

(1) 1" GRG TO CANOPY COLUMN FOR LIGHTING (COLUMN FURTHEST FROM STORE) - COLUMN (SEE SHEET CE1 FOR COUNT)

(4) 3/4" GRG TO EACH DISPENSER (1 POWER, 1 DATA, 1 MUSIC, 1 FUEL-TANK SENSOR)

(2) 1" GRG TO EACH TANK STOP CONTAINER (F.E. FUEL-TANK SENSOR, 1 SPARE)

(1) 3/4" GRG TO EACH TANK STOP CONTAINER (FUEL-TANK SENSOR, 1 SPARE)

(1) 1" GRG TO EACH TANK STOP CONTAINER (FUEL-TANK SENSOR, 1 SPARE)

(1) 1" GRG TO OVERFILL ALARM (ON VENT STACK)

(1) 1" GRG TO VENT STACK (SPARE)

(1) 1" GRG TO 6-STOP AT STREET SIDE OF GAS CANOPY (SEE NOTE 15 ON SHEET E4)

ELECTRICAL NOTES

1. ALL FIXTURES AND COMPONENTS SHALL BE GROUNDED BY A SEPARATE #10 GROUND WIRE FROM THE PETROLEUM CONTRACTOR TO THE INTERCOMM-SIC SUPPLIED BY THE GENERAL CONTRACTOR.

2. THE RESULT FOR THE "TYP" FIXTURES TO RUN ALONG THE GUTTER PAN AND RUN TO THE RISERS IN THE FLUTES OF THE DECKING. NO CONDUIT SHOULD BE VISIBLE FROM BELOW THE CANOPY.

3. FOR DISPENSER DATA, WEEDEER ROOT SENSOR, AND INTERCOMM-SIC PROVIDE CONDUITS AND CONNECTIONS AS REQUIRED. COORDINATE WITH WAWA CONSTRUCTION MANAGER.

4. USE THIS CIRCUIT TO PROVIDE POWER TO 230 VOLT ILLUMINATED SIGN AT THIS LOCATION BETWEEN CANOPY COLUMNS AT APPROXIMATELY 12' A/C.

5. ELECTRICAL CONTRACTOR TO COORDINATE WITH PETROLEUM CONTRACTOR AND GENERAL CONTRACTOR TO MAKE SURE THAT SEAL OFF FITTINGS AS REQUIRED ARE PROVIDED FOR CONDUITS ENTERING THE FUEL DISPENSERS AND THAT THE ELECTRICAL INSTALLATION AT THE GAS CANOPY AND FUEL TANKS IS IN ACCORDANCE WITH NEC ARTICLE 514.

6. FOR BRANCH CIRCUITS OUT TO CANOPY AREA, IF CIRCUIT LENGTH EXCEEDS 100 FEET (WHERE CONDUIT MUST BE SIZED PER NEC 314.103 ABC, I.2 (FLORIDA ONLY)), LIGHT FIXTURES PROVIDED BY WAWA AND INSTALLED BY CANOPY VENDOR, E.G. RESPONSIBLE FOR CONDUIT, WRING AND FINAL CONNECTION.

TANKS AND CANOPY CONDUITS AND CONDUCTORS NOTE

THE GENERAL CONTRACTOR SHALL FURNISH AND INSTALL ALL GRG CONDUIT, ASSOCIATED FITTINGS AND WIRE NECESSARY TO PROVIDE A COMPLETE ELECTRICAL SYSTEM FOR THE GAS CANOPY, FUEL TANKS, MUSIC AND INTERCOM BY EISA.

HOWEVER, THE FOLLOWING CONDUIT SHALL BE PROVIDED AND INSTALLED BY THE CONTRACTOR INDICATED BELOW:

FUEL TANKS
PETROLEUM CONTRACTOR SHALL FURNISH AND INSTALL THE CONDUIT FROM THE EDGE OF THE FUEL TANK CONCRETE PAD AND TERMINATE AT THE TANK EQUIPMENT.

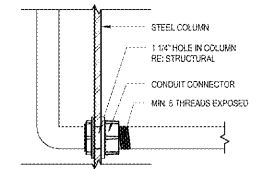
GAS CANOPY
PETROLEUM CONTRACTOR SHALL FURNISH AND INSTALL THE CONDUIT FROM THE EDGE OF THE CONCRETE CANOPY PAD TO THE BASE OF THE CANOPY COLUMN WHERE THEY WILL MAKE A THREADED CONNECTION. (REFER TO DETAIL A/C2) CANOPY FABRICATOR SHALL FURNISH AND INSTALL THE THREADED CONNECTOR (MIN 5 EXPOSED THREADS) AT THE BASE OF THE CANOPY COLUMN AND CONTINUE UP THROUGH THE COLUMN TO A SEAL OFF AND BREAK AT 2'-4" THEN CONTINUE WITH RIGID CONDUIT TO THE BOTTOM OF THE CANOPY WHERE IT WILL TRANSITION TO SOFT TIGHT CONDUIT AND TERMINATE AT THE FIRST ROW OF LIGHTS. GC SHALL CONNECT INTO THE FIRST ROW OF LIGHTS AND COMPLETE THE ELECTRICAL CANOPY LIGHTING.

PETROLEUM CONTRACTOR SHALL ALSO INSTALL THE CONDUIT FROM THE EDGE OF THE CONCRETE CANOPY PAD TO THE TERMINATION POINT FOR THE MUSIC AND INTERCOM SYSTEMS.

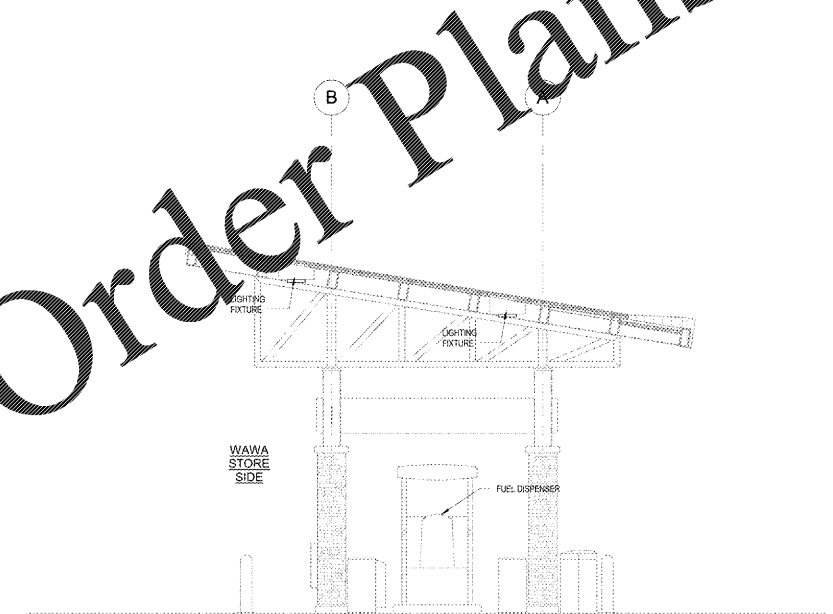
Lighting Fixture Schedule

TYPE	MANUF.	CATALOG NO.	QUANT.	WATTS / LAMP	LAMPS / FIXTURE	FIXTURE SURFACE
FD		LED - DECK MOUNT - SLOPED ADAPTOR	32	114 W	1	FIXTURE SURFACE

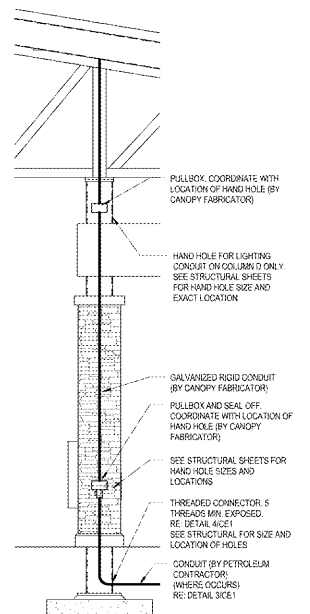
ALL LIGHT FIXTURES AND LAMPS SUPPLIED BY WAWA, INSTALLED BY G.C.
COORDINATE FIXTURE COUNT, LOCATIONS AND LAMP OUTPUT WITH SITE LIGHTING ENGINEERING DRAWINGS.



4 THREADED CONNECTION
01 2" x 10"



2 CANOPY SIDE ELEVATION
01 30' x 14'



5 COLUMN SECTION
01 30' x 14'

GASOLINE CANOPY CONDUIT REQUIREMENTS:

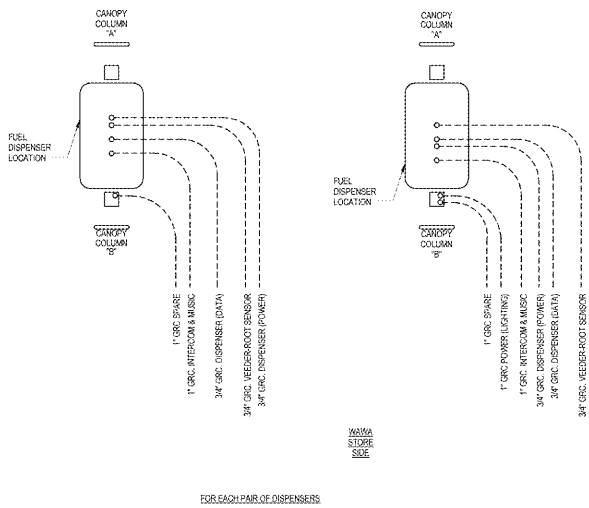
(1) 3/4" GRG TO EACH DISPENSER FOR INTERCOMM-SIC

(1) 1" GRG TO EVERY OTHER CANOPY COLUMN 9 FOR CANOPY LIGHTING

(1) 1" GRG TO EVERY OTHER CANOPY COLUMN 9 FOR SPARE

(2) 3/4" GRG TO EACH DISPENSER (1 POWER, 1 DATA)

(1) 3/4" GRG TO EACH DISPENSER (WEEDEER ROOT SENSOR)



3 CANOPY CONDUIT LOCATIONS
01 10' x 14'

Order Plans @

WWW.LDILLINE.COM

CLIENT NAME
WAWA
280 WEST BALTIMORE PIKE
WAWA, PENNSYLVANIA 19053

PROJECT NAME
WAWA STRAIGHT 8 GAS CANOPY 2018.01 STORE #6337 - MRC
SE MARICAMP RD. & SE 24th ST.
OCALA, FL

SHEET TITLE
ELECTRICAL CANOPY PLANS, DETAILS, SCHEDULES

Revision Schedule

No.	DATE	DESCRIPTION
1	08/04/2017	PRELIMINARY SET
2	09/02/2017	REVISED WAWA SET
3	10/03/2017	REVISED WAWA SET
4	10/26/2017	REVISED WAWA SET

PROJECT NO. 2170250
DATE 08/04/2017
DRAWN JPM
CHECKED JPM

CE1