

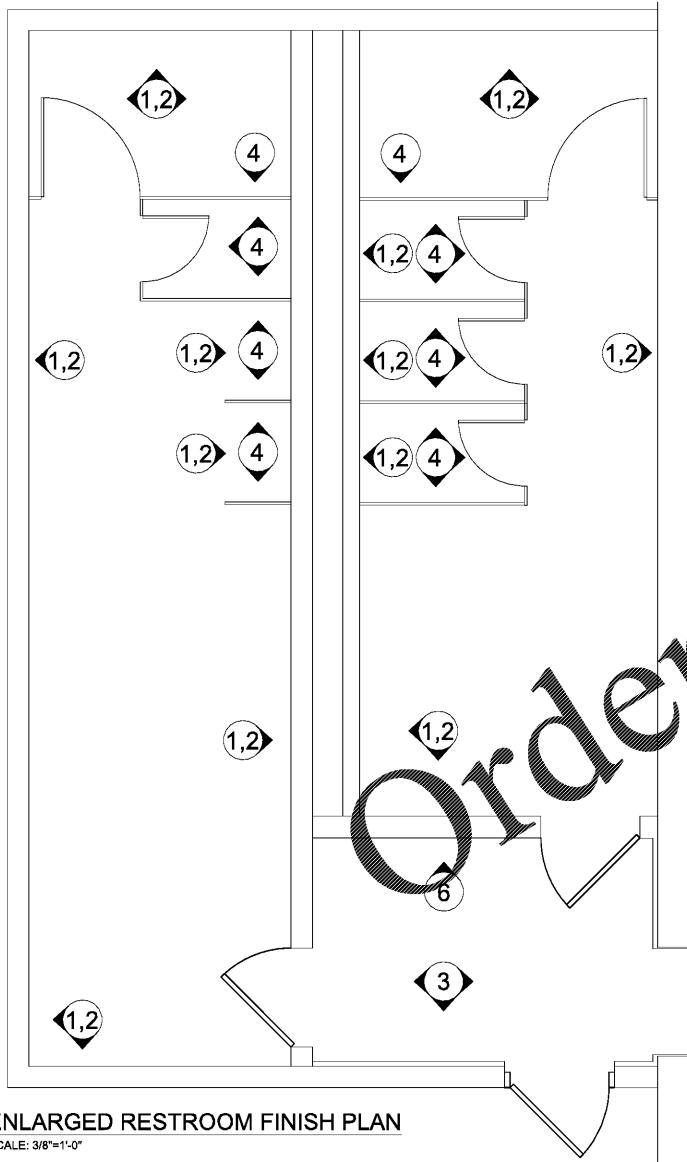
FINISH SCHEDULE

ROOM & OR AREA	FLOOR	BASE		WALL AND SURFACE			CEILING		REMARKS
		FLOOR TYPE	WALL TYPE	WALL FINISH	WALL FINISH	WALL FINISH	MATERIAL	HEIGHT	
VESTIBULE	CT-1	WB-1	P-1						
PERIMETER SALES AREA	FL-2	WB-1	P-1						
FURNITURE SALES AREA	FL-1								
INTERIOR STEEL COLUMNS									
INTERIOR COLUMNS									
WOMEN'S RESTROOM	FL-2	WB-1	P-1	WT-1, WT-3					SEE ENLARGED RESTROOM FINISH SCHEDULE PLAN
MEN'S RESTROOM	FL-2	WB-1	P-1	WT-1, WT-3					SEE ENLARGED RESTROOM FINISH SCHEDULE PLAN
RESTROOM PARTITIONS									
WATER COOLER AREA	FL-2	WB-1	P-1	WT-2					SEE ENLARGED RESTROOM FINISH SCHEDULE PLAN
RESTROOM ENTRY	FL-2	WB-1	P-2, P-3						
MANAGERS OFFICE	FL-2	WB-1	P-1						
CASH ROOM	FL-2	WB-1	P-1						
LOUNGE	FL-2	WB-1	P-1						
STOCK ROOM	P-11								
JANITOR CLOSET	FL-2	WB-1	P-1, P-8						
ELECTRIC & SPRINKLER	P-11								

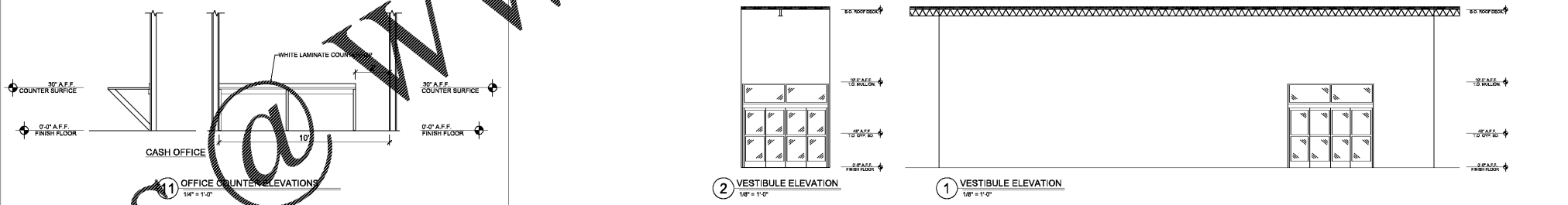
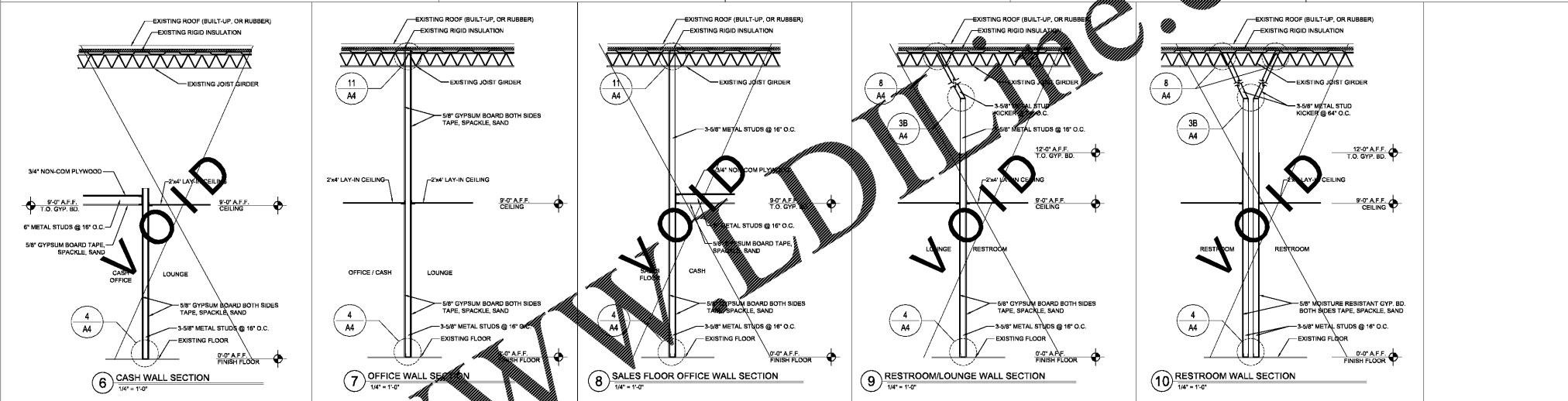
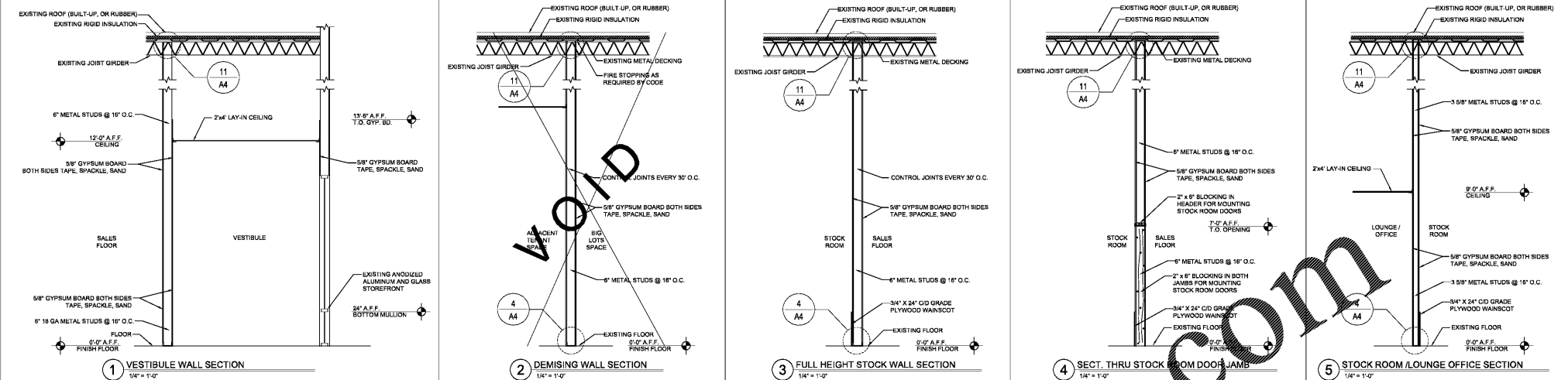
1/2" O.C. TO LEAVE A GALLON OF EACH PAINT COLOR AT THE STORE AT THE END OF THE PROJECT.

INTERIOR FINISH LEGEND

- [P-1] PPG - SPEEDHIDE LATEX EGGSHELL 6-411 FINISH COLOR - 1008-1 FOCUS
- [P-2] PPG - 90-313 PITT-TECH DTM ACRYLIC GLOSS - SAFETY ORANGE - ADD 2 1/2 AND W/ 1/2 PER GALLON FINISH COLOR - 'BIG LOTS ORANGE' - PAINT FLOOR TO CEILING.
- [P-3] PPG - FLAGSTONE 1001-4 FINISH EGGSHELL.
- [P-4] PPG - PITT TECH DTM ACRYLIC EGGSHELL FINISH COLOR - 90-353 'PACKAGE BLACK'
- [P-5] WOOD CLASSICS INTERIOR STAIN - WALNUT WITH POLYURETHANE SEMI GLOSS FINISH. (SPEC FORTHCOMING)
- [P-6] NEW BLACK METAL RESTROOM PARTITIONS - SEE VENDOR CONTACT ON MATERIAL EQUIPMENT SCHEDULE.
- [P-8] FIBERGLASS REINFORCED PLASTIC 7/16" BRITE WHITE WITH T-MOLDING & J-MOLDING ON WALL BEHIND MOP SINK FROM FLOOR TO MAX. 6'-0" A.F.F.
- [P-9] INSTALL PLYWOOD ON THE BACK OF ALL EXPOSED STOCKROOM DRYWALLS TO 2' A.F.F.
- [P-10] PPG - PITT TECH DTM ACRYLIC GLOSS FINISH COLOR - 1008-1 FOCUS
- [P-11] CONCRETE FLOOR SEALER FLUO DIAMOND CLEAR #1178 APPLICATION - FLOOR TO BE SCRUBBED AND APPLY 3 COATS WITH ROLLER - NO SPRAY APPLICATIONS
- [P-12] PPG - WHITE - DRY FALL FLAT FINISH - PAINT ALL ROOF CEILING, JOISTS, DUCTWORK, CONDUIT, ETC.
- [P-13] STAINLESS STEEL CORNER GUARDS - RETAIL SPECIALTY INC. - 2"X2" - 48" HT 18 GAUGE - SATIN FINISH #4 S.S. - 400 GRADE - CD 4192 (MODEL)
- [P-14] STAINLESS STEEL COLUMN WRAPS - RETAIL SPECIALTY INC. - 22 GAUGE @ 48" A.F.F. - GC TO VERIFY ALL COLUMN SIZES PRIOR TO ORDERING.
- [CT-1] SHAW WALK OFF CARPET TILE - PATH CARPET TILE / ST034 LAVA 3636 24"X24"
- [FL-1] SHAW WOOD LOOK LVT - HIGHLAND FOREST 6" 890V LIGHT OAK 20220 36"X48"
- [FL-2] SHAW CONCRETE LVT - AGGREGATE/1333V PUTTY 00320 24"X24"
- [WB-1] ARMSTRONG VINYL WALL BASE - BLACK 880 .080 4"
- [WT-1] MARLITE PANELS (SYMMETRIX WITH SANI-COAT) - #C 100-G63 WHITE. INSTALL UP TO 48" AFF.
- [WT-2] MARLITE PANELS (SYMMETRIX WITH SANI-COAT) - ORANGE 1123 GEAR. INSTALL FLOOR TO CEILING
- [WT-3] MARLITE PANELS (FR-PATON DARK GREY). INSTALL FROM TOP OF WHITE MARLITE TO CEILING.



ENLARGED RESTROOM FINISH PLAN
SCALE: 3/8"=1'-0"



MAXIMUM STUD HEIGHT TABLE (SSMA TECHNICAL GUIDE)

STUD SIZE	NON-COMPOSITE DECK 20' O.C. LIMITING WALL HEIGHTS		
	5 PSF	10 PSF	15 PSF
16	10'-0"	10'-0"	10'-0"
18	11'-0"	11'-0"	11'-0"
20	12'-0"	12'-0"	12'-0"
22	13'-0"	13'-0"	13'-0"
24	14'-0"	14'-0"	14'-0"
26	15'-0"	15'-0"	15'-0"
28	16'-0"	16'-0"	16'-0"
30	17'-0"	17'-0"	17'-0"
32	18'-0"	18'-0"	18'-0"
34	19'-0"	19'-0"	19'-0"
36	20'-0"	20'-0"	20'-0"
38	21'-0"	21'-0"	21'-0"
40	22'-0"	22'-0"	22'-0"
42	23'-0"	23'-0"	23'-0"
44	24'-0"	24'-0"	24'-0"
46	25'-0"	25'-0"	25'-0"
48	26'-0"	26'-0"	26'-0"
50	27'-0"	27'-0"	27'-0"
52	28'-0"	28'-0"	28'-0"
54	29'-0"	29'-0"	29'-0"
56	30'-0"	30'-0"	30'-0"
58	31'-0"	31'-0"	31'-0"
60	32'-0"	32'-0"	32'-0"
62	33'-0"	33'-0"	33'-0"
64	34'-0"	34'-0"	34'-0"
66	35'-0"	35'-0"	35'-0"
68	36'-0"	36'-0"	36'-0"
70	37'-0"	37'-0"	37'-0"
72	38'-0"	38'-0"	38'-0"
74	39'-0"	39'-0"	39'-0"
76	40'-0"	40'-0"	40'-0"
78	41'-0"	41'-0"	41'-0"
80	42'-0"	42'-0"	42'-0"
82	43'-0"	43'-0"	43'-0"
84	44'-0"	44'-0"	44'-0"
86	45'-0"	45'-0"	45'-0"
88	46'-0"	46'-0"	46'-0"
90	47'-0"	47'-0"	47'-0"
92	48'-0"	48'-0"	48'-0"
94	49'-0"	49'-0"	49'-0"
96	50'-0"	50'-0"	50'-0"
98	51'-0"	51'-0"	51'-0"
100	52'-0"	52'-0"	52'-0"

MAXIMUM STUD HEIGHT TABLE NOTES:

- ALLOWED NON-COMPOSITE DECKS AT 20' O.C. LIMITING HEIGHTS ARE CALCULATED USING 2001 NORTH AMERICAN SPECIFICATION (S500.7).
- NO FASTENERS ARE REQUIRED FOR ATTACHING THE STUD TO THE TRACK.
- STUD END BEARING MUST BE A MINIMUM OF 1" INCH.
- NON-COMPOSITE DECKS AT 40' O.C. LIMITING HEIGHTS ARE BASED ON A SINGLE LAYER OF 1/2" TYPE X GYPSUM BOARD INSTALLED ON ONE SIDE OF THE WALL. 48" O.C. FOR STUDS AT 16" SPACING. CHANNEL BRACING AND BRACING TO BE 2000 PSI MINIMUM GRADE METAL THICKNESS WITH MINIMUM 1/2" WIDE FLANGES SPACED AT 48" O.C.
- HEIGHTS DESIGNATED "1" INDICATED FLEXURAL STRESS CONTROLS ALLOWABLE HEIGHT.
- USE STRUCTURAL STEEL STUDS (S) (1/2" FLANGE) WHEN WALLS CARRY LOADS FOR SERVING CEILING. REFER TO TABLE - INTERIOR WALL HEIGHTS WITH STRUCTURAL FRAMING.

STUD SIZE DESIGNATION

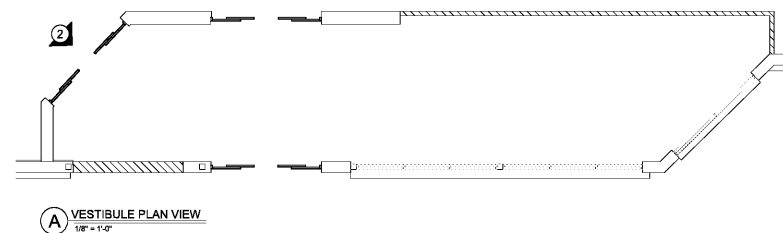
DESIGNATION	W	H	T
600S62-33	16	30'-0"	28'-0"
600S62-43	16	35'-0"	28'-0"
600S62-54	16	38'-0"	30'-0"
600S62-68	16	41'-0"	32'-0"
600S62-97	16	45'-0"	36'-0"

STRUCTURAL STUD NOTE

ALL STUDS DESIGNATED AS 20M MUST BE 33 MIL AND COMPLY WITH THE MAXIMUM STUD HEIGHT TABLE ABOVE. NO 20 MIL NON-STRUCTURAL STUDS ARE PERMITTED.

RESTROOM FINISH CODED NOTES:

- INSTALL MARLITE PANELS (SYMMETRIX WITH SANI-COAT) - #C 100G63 - WHITE UP TO 48" AFF.
- INSTALL MARLITE PANELS (FR-PATON DARK GREY) FROM TOP OF WHITE MARLITE PANELS TO CEILING.
- PAINT SHEETROCK WALLS WITH PPG - FLAGSTONE 1001-4 EGGSHELL FINISH.
- NEW BLACK METAL PARTITIONS
- PPG - 90-313 PITT-TECH DTM ACRYLIC GLOSS - SAFETY ORANGE - ADD 2 1/2 AND W/ 1/2 PER GALLON FINISH COLOR - 'BIG LOTS ORANGE' - PAINT FLOOR TO CEILING.
- INSTALL P-8 WHITE FRP - 48" WIDE CENTERED ON WATER COOLERS UP TO 54" A.F.F.



VESTIBULE PLAN VIEW
SCALE: 1/8"=1'-0"

DATE	REVISION
04-02-19	
DATE DRAWN:	04-02-19
DRAWN BY:	F.A.
SCALE:	3/32" = 1'-0"
SQUARE FOOTAGE	SqFt
SALES FLOOR	25,685
TOTAL BUILDING	39,910
BIG LOTS STORES, INC. 14154 E. WADE HAMPTON BLVD. GREER, SOUTH CAROLINA 29651	
BIG LOTS STORES, INC. STORE PLANNING DEPT. 4900 E. DUBLIN GRANVILLE RD COLUMBUS, OHIO 43081 PHONE: (614) 278-6800	
ARCHITECT NAME: WILLIAM E. ABBOT LICENSE NUMBER: 456 LICENSE EXPIRATION DATE: 06-30-2019	
SHEET: A-1.1	