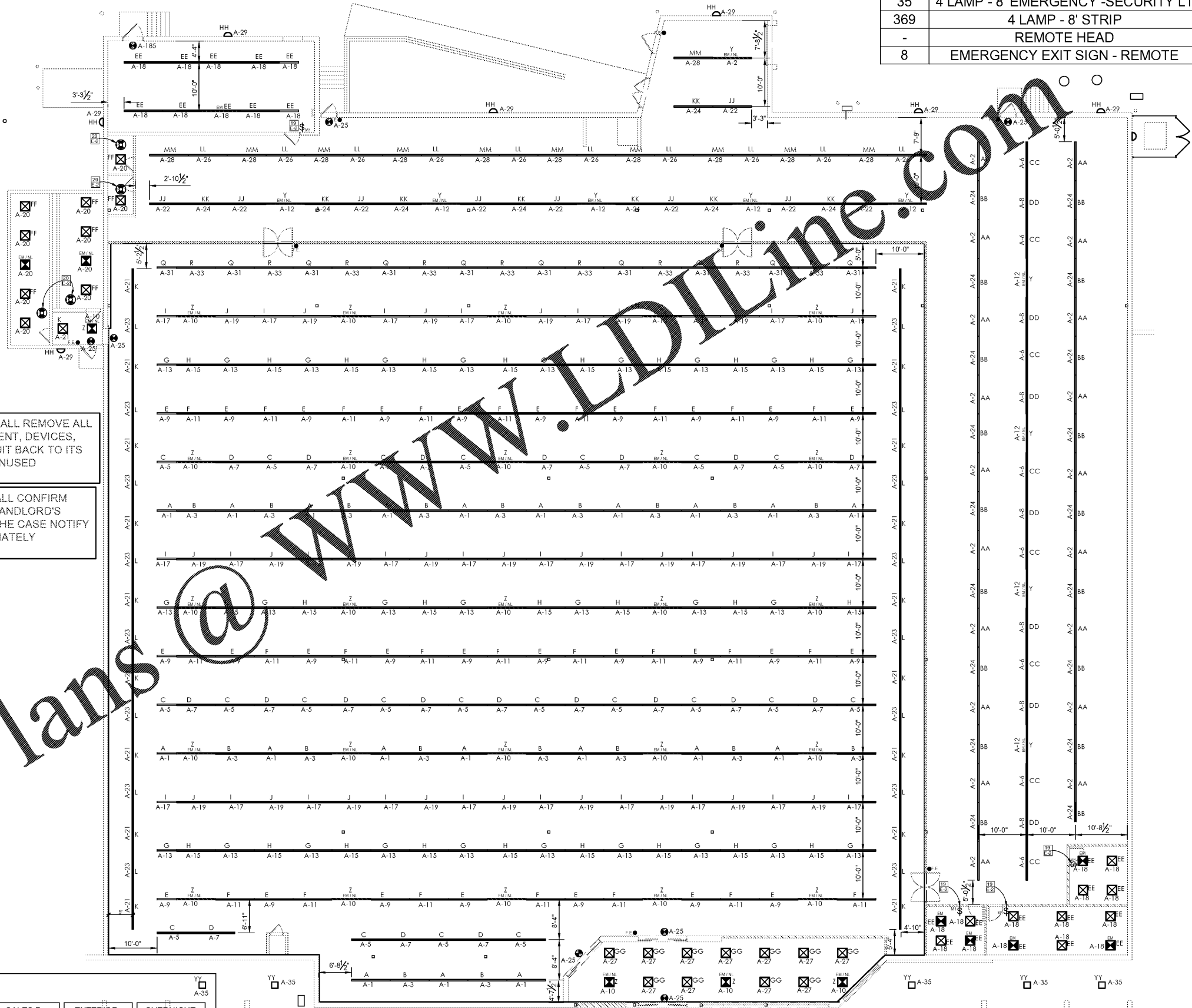


LIGHTING LEGEND

- REMOTE EMERGENCY LIGHTING HEAD
-COOPER LIGHTING - SURE LITES PART# APWR2
- EMERGENCY EXIT SIGN
-COOPER LIGHTING - SURE LITES, PART# APX7R
- EMERGENCY EXIT SIGN - REMOTE CAPABLE
-COOPER LIGHTING - SURE LITES, PART# APCH7R
- CANOPY LIGHT
-COOPER LIGHTING - HALO, PART# PD615ED010, PDM6835, 61W
- NEW 2 LAMP 4FT STRIP
-(METALUX) #8TSF232UNVOSQHE4X32T8UNVISLSCU
-SYLVANIA LAMP PART# 75526-LED15T8L48FP841SUBG6 (30W)
- NEW 4 LAMP 8FT STRIP
-(METALUX) #8TSF232UNVOSQHE4X32T8UNVISLSCU
-SYLVANIA LAMP PART# 75526-LED15T8L48FP841SUBG6 (60W)
- NEW 4 LAMP 8FT EMERGENCY STRIP
-(METALUX) #8TSF232120VELB500SQHE4X32T8UNVISLSCU
-SYLVANIA LAMP PART# 75526-LED15T8L48FP841SUBG6 (60W)
SEE LIGHTING NOTES 6, 7, AND 8 FOR WIRING INSTRUCTIONS.
- NEW 2X2 LED FLAT PANEL, #22FP3240C (30W)
- NEW 2X2 LED FLAT PANEL W/EMERGENCY BALLAST,
#22FP3240C W/EBPLED7W (30W)
SEE LIGHTING NOTES 6, 7, AND 8 FOR WIRING INSTRUCTIONS.
- NEW 2X2 LED FLAT PANEL W/EMERGENCY BALLAST
#22FP3240C - W/EBPLED7W, (30W)
SEE LIGHTING NOTES 6, 7, AND 8 FOR WIRING INSTRUCTIONS.
- MOTION ACTIVATED SWITCH LEVITON PART# ODS10-IDW
(SEE NOTE #19 SHEET E-2)
- LOW VOLTAGE CEILING SENSOR PART# OACDT1000 WITH
COOPER #SPD20MVNO-DUAL RELAY SWITCH PACK
(SEE NOTE #20 SHEET E-2)
- LED TRACKHEAD
-(SOLAIS LIGHTING) - #XD24-25-30K-2400-COLOR-J
- LED TRACKHEAD
-(SOLAIS LIGHTING) - #XD24-40-30K-2400-COLOR-J
NOTE: LIGHTS TO BE MOUNTED 2'-0" ABOVE SIGN THAT WILL
BE ILLUMINATED
- NEW 4FT SINGLE CIRCUIT LINE VOLTAGE TRACK
-(CONTECH LIGHTING) #LT-4-B
- NEW 8FT SINGLE CIRCUIT LINE VOLTAGE TRACK
-(CONTECH LIGHTING) #LT-8-B

LIGHTING TAKE OFF	
Count	Name
17	2 LAMP - 4' STRIP
12	2 LAMP - EM- 2x2 TROFFER
31	2 LAMP - 2x2 TROFFER
35	4 LAMP - 8' EMERGENCY - SECURITY LT
369	4 LAMP - 8' STRIP
-	REMOTE HEAD
8	EMERGENCY EXIT SIGN - REMOTE



ELECTRICAL CONTRACTOR SHALL REMOVE ALL UNUSED ELECTRICAL EQUIPMENT, DEVICES, BOXES, WIRE AND AND CONDUIT BACK TO ITS SOURCE. DO NOT ABANDON UNUSED EQUIPMENT IN PLACE.

ELECTRICAL CONTRACTOR SHALL CONFIRM PARKING LOT LIGHTS ARE ON LANDLORD'S HOUSE PANEL. IF THIS IS NOT THE CASE NOTIFY ROB HILLIS AT BIG LOTS IMMEDIATELY 614-278-6735

ELECTRICAL CONTRACTOR SHALL PROVIDE #10 WIRE (MINIMUM) FOR ALL SALES AREA LIGHTING

LIGHTING NOTES

1. ALL LIGHT FIXTURES IN THE STOCK AND STORAGE AREA TO BE HUNG AT 14' AFF.
2. ALL LIGHT FIXTURES IN THE SALES FLOOR TO BE HUNG FROM THE BOTTOM OF THE CEILING GRID WHEN APPLICABLE. BY THE CLIPS PROVIDED, OR AT 14' AFF IF AN EXPOSED DECK.
3. ALL PERIMETER LIGHTING FIXTURES ON THE SALES FLOOR TO BE MOUNTED BETWEEN 4' TO 6' FROM ANY WALL AND 10' ON CENTER WHERE APPLICABLE. ROWS SHOULD RUN LEFT TO RIGHT FROM STORE FRONT.
4. ALL THE LIGHT FIXTURES IN THE STOCK OR STORAGE AREAS TO BE MOUNTED AT 12'-0" ON CENTER
5. ANY LIGHTING FIXTURES THAT ARE INSTALLED AT 10' OR BELOW MUST HAVE PROTECTIVE CAGES.
6. SALES FLOOR, STOCK ROOM, AND MEZZANINE (IF APPLICABLE) EMERGENCY LIGHTING TO HAVE A DEDICATED CIRCUIT FROM THE PANEL TO THE LIGHT FIXTURE. EMERGENCY FIXTURE WILL TURN ON ONE BULB IF CONSTANT POWER IS LOST. THE LIGHT FIXTURE SHOULD BE WIRED AS A NIGHT LIGHT IN THESE AREAS. THE EMERGENCY LIGHT SHOULD NOT BE RUN THROUGH LIGHTING CONTACTOR. ONLY REGULAR LIGHTING IN THESE AREAS TO RUN THROUGH LIGHTING CONTACTOR.
7. RESTROOM LIGHTING TO HAVE A DEDICATED 120V CIRCUIT. EMERGENCY LIGHT SHOULD ACT AS A NIGHT LIGHT. LIGHT FIXTURES IN THE RESTROOM THAT AREN'T EMERGENCY FIXTURES SHOULD RUN THROUGH THE LIGHTING CONTROL PANEL. SEE DETAIL 1 ON SHEET E-5 FOR WIRING CONFIGURATION.
8. OFFICES AND LOUNGE - EMERGENCY LIGHTING FIXTURES TO HAVE CONSTANT HOT AND SWITCH HOT. THE LIGHTS IN THESE ROOMS SHOULD RUN THROUGH LIGHTING CONTROL PANEL AND RETURN TO SWITCH. THESE ROOMS WILL HAVE A CONSTANT HOT AND A SWITCH HOT FROM THE SAME CIRCUIT. REFER TO DETAIL 2 ON SHEET E-5 FOR WIRING CONFIGURATION.
9. ALL CHANGES TO BE APPROVED BY A BIG LOTS, INC. REPRESENTATIVE.
10. ALL WORK TO BE DONE IN A WORKMAN LIKE MANNER WITH A ONE YEAR WARRANTY ON THE LABOR AND MATERIAL OF INSTALLATION.
11. ALL LOCATIONS TO BE FIELD VERIFIED.

(LCP) LIGHTING CONTROL PANEL - CONTACTOR SCHEDULE

EMPLOYEE CONTACTOR 1	EMPLOYEE CONTACTOR 2	EMPLOYEE CONTACTOR 3	SALES A CONTACTOR 4	SALES B1 CONTACTOR 5	SALES B2 CONTACTOR 6	SALES C CONTACTOR 7	SALES D CONTACTOR 8	EXTERIOR CONTACTOR 9	OVERNIGHT CONTACTOR 10
CIRCUIT TERMINAL	CIRCUIT TERMINAL	CIRCUIT TERMINAL	CIRCUIT TERMINAL	CIRCUIT TERMINAL	CIRCUIT TERMINAL	CIRCUIT TERMINAL	CIRCUIT TERMINAL	CIRCUIT TERMINAL	CIRCUIT TERMINAL
EE R2	BB R2	AA R2	A R2	B R2	R R2	C R2	D R2	XX R2	HH R2
FF R4	DD R4	CC R4	E R4	F R4	R4	G R4	H R4	YY R4	
GG R6	KK R6	JJ R6	I R6	J R6	R6	K R6	L R6		
	MM R8	LL R8	Q R8	N R8	R8	O R8	P R8		

DATE	REVISION								
BIG LOTS STORES, INC. 14154 E. WADE HAMPTON BLVD. GREER, SOUTH CAROLINA 29651									
DATE DRAWN:	04-02-19	DRAWN BY:	F.A.	SCALE:	3/32" = 1'-0"	SQUARE FOOTAGE	SALES FLOOR	TOTAL BUILDING	SALES FLOOR
						A/EB	25,685	39,910	25,685
BIG LOTS STORES, INC. STORE PLANNING DEPT. 4900 E. DUBLIN GRANVILLE RD COLUMBUS, OHIO 43081 PHONE: (614) 278-6800									
SHEET: E-6									

LIGHTING PLAN