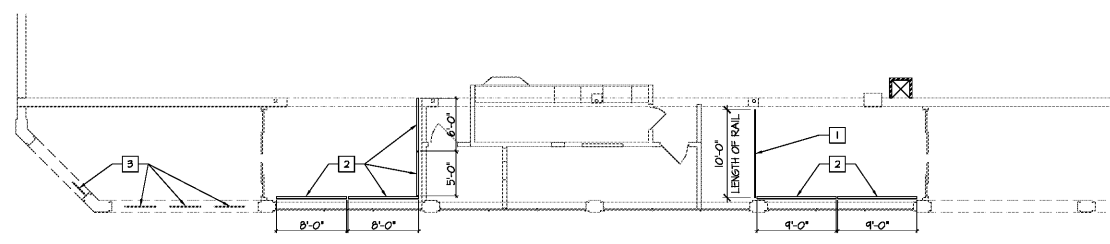


Order Plans @



STAINLESS STEEL PLAN
SCALE: 1/8" = 1'-0"

NOTE:
STAINLESS STEEL CART RAILS AND CART ENCLOSURES SHALL BE SUPPLIED BY LAMBERT METAL SERVICES, LLC.
CONTACT PERSON: DARRYL L. LAMBERT
6825-E HILL PARK DRIVE
LORTON, VIRGINIA 22074
(O) 571-261-5011
(F) 571-261-5012
(C) 703-752-6486
lambsmetalsvs@aol.com

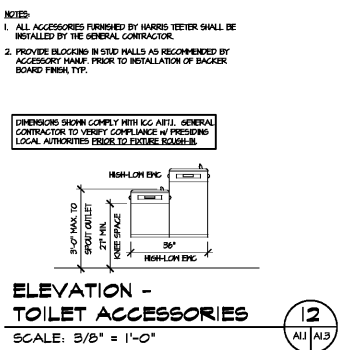
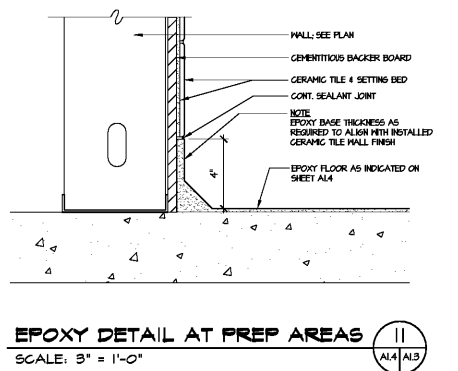
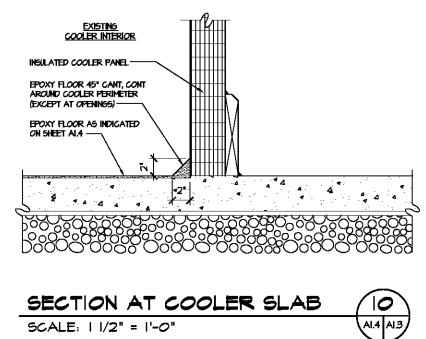
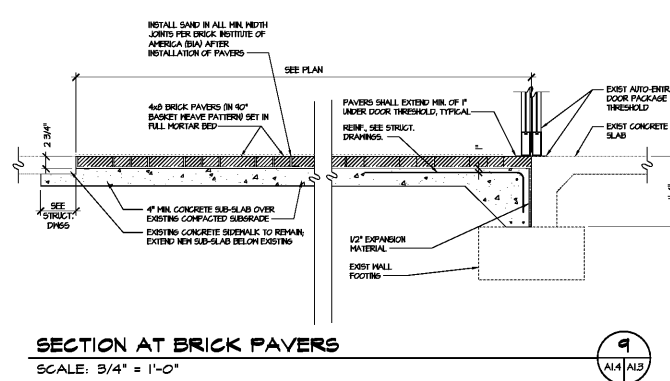
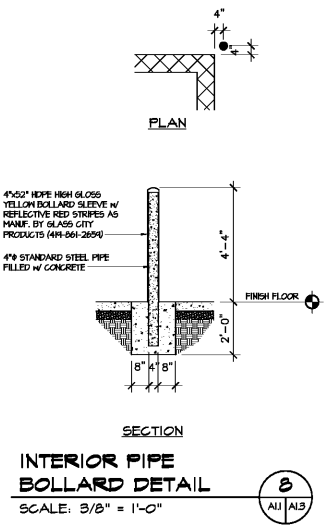
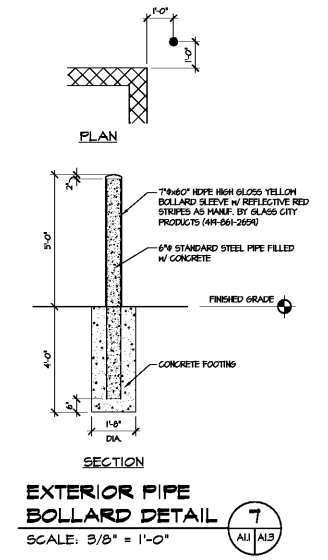
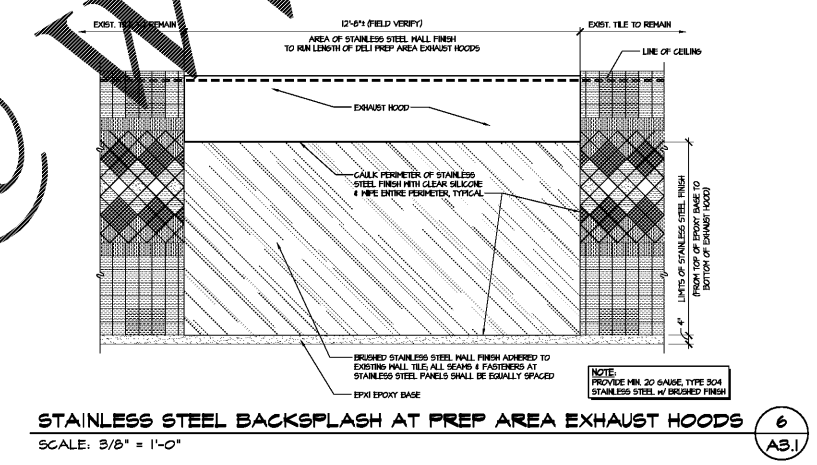
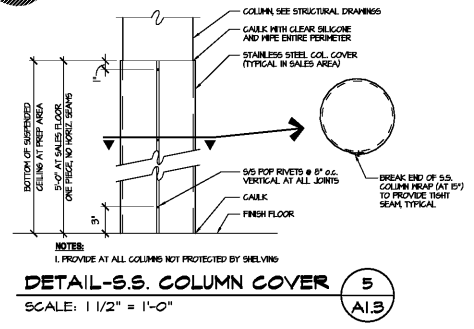
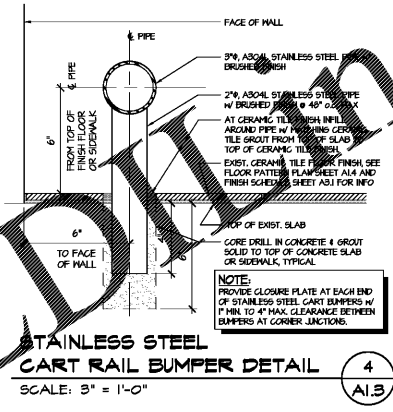
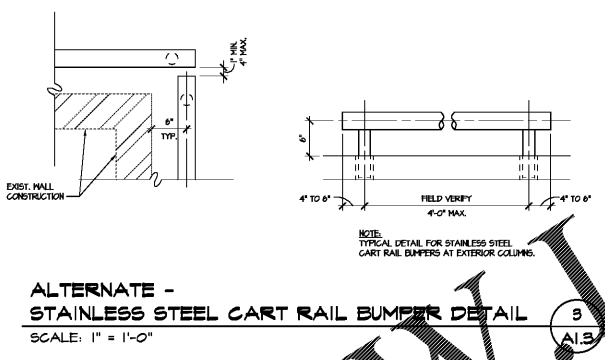
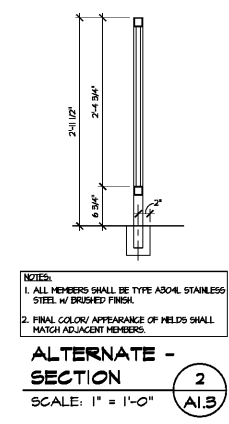
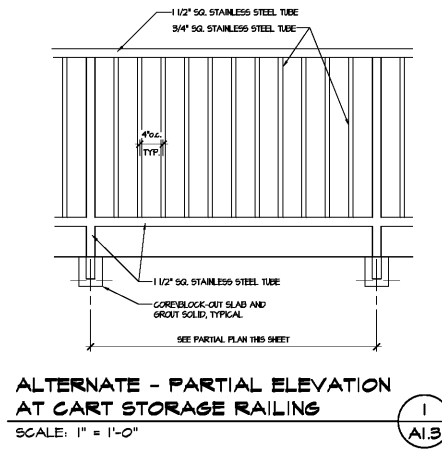
GENERAL NOTES
A. THE GENERAL CONTRACTOR SHALL FIELD VERIFY DIMENSIONS AND INFORM THE ARCHITECT OF ANY DISCREPANCIES OR UNUSUAL CONDITIONS ENCOUNTERED IN THE FIELD PRIOR TO FABRICATION OF STAINLESS STEEL.
B. ALL MEMBERS SHALL BE TYPE A304L STAINLESS STEEL WITH BRUSHED FINISH.
C. FINAL COLOR & APPEARANCE OF HELDS SHALL MATCH ADJACENT MEMBERS.
D. SEE PLANS & DETAILS FOR LOCATION LIMITS & ADDITIONAL INFO.

KEY PLAN NOTES
1. STAINLESS STEEL CART RAILS - SEE DETAIL VIEWS 1 & 2 A1.3.
2. STAINLESS STEEL CART BUMPER - SEE DETAIL VIEWS 3 & 4 A1.3.
3. EXISTING STAINLESS STEEL CART RAILS SHALL BE REPAIRED AS DIRECTED BY THE R.T. PROJECT MANAGER.

Design and Construction Documents are the property of Bondurant Associates, Inc. and shall remain the property of Bondurant Associates, Inc. No part of this design or other information contained herein may be reproduced, stored in a retrieval system, or transmitted in any form or by any means without the written permission of Bondurant Associates, Inc.

Date: SEPTEMBER 10, 2019 Job No. 1922

Revisions:	No.	Date	By	Check	Notes



BONDURANT ASSOCIATES & ENGINEERING & ARCHITECTURE
444 CRAWFORD STREET
PORTSMOUTH, VIRGINIA



Harris Teeter
Neighborhood Food & Pharmacy

Project: **HARRIS TEETER STORE #289 - REMODEL**
2603 GLENWOOD AVENUE, SUITE 101
RALEIGH, NC 27608
MISCELLANEOUS ENLARGED PLANS,
SECTIONS, AND DETAILS