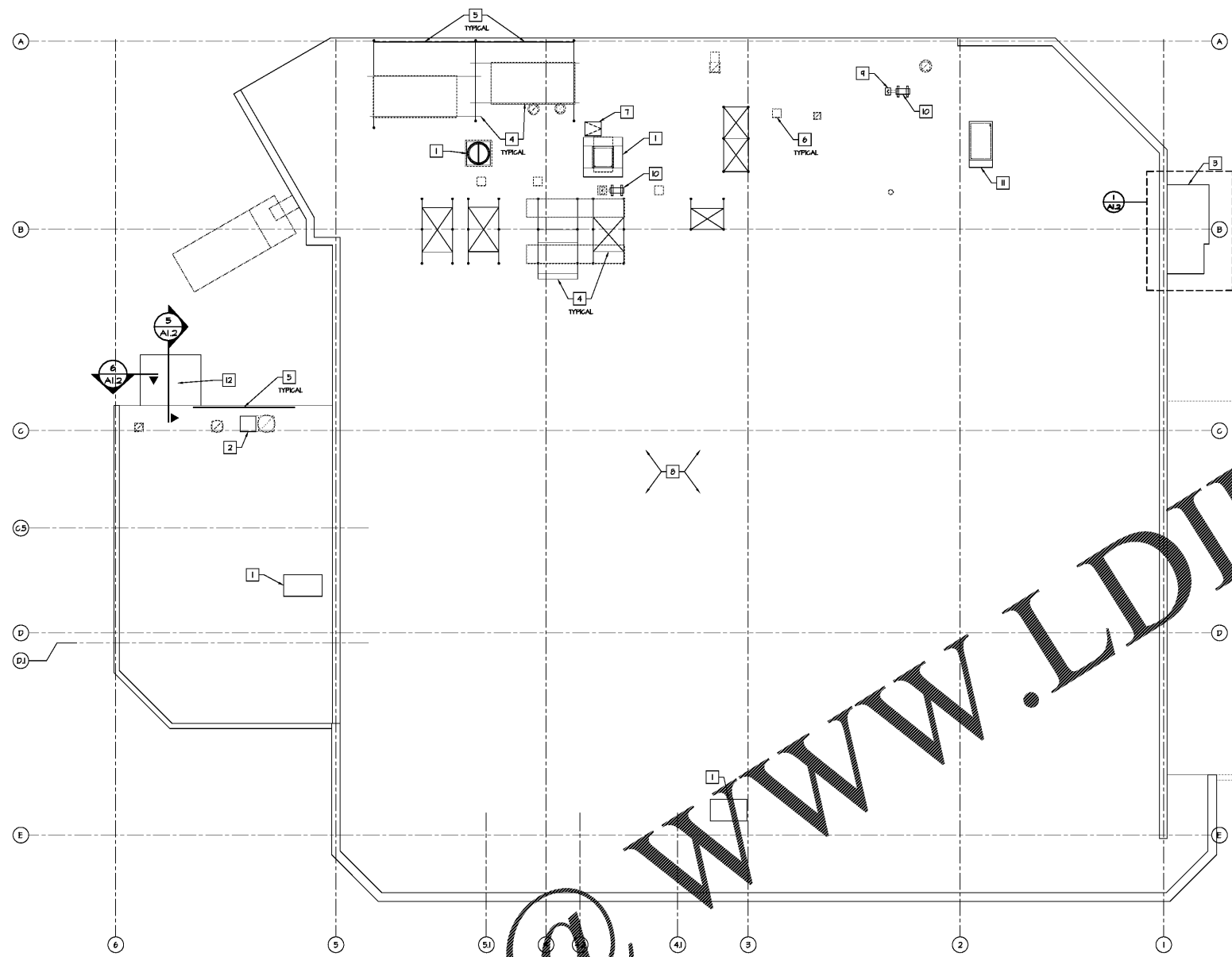


Order Plans @

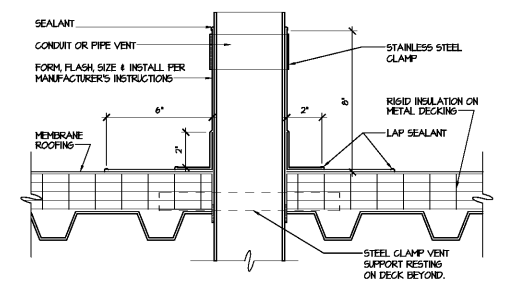
WWW.LDILine.com



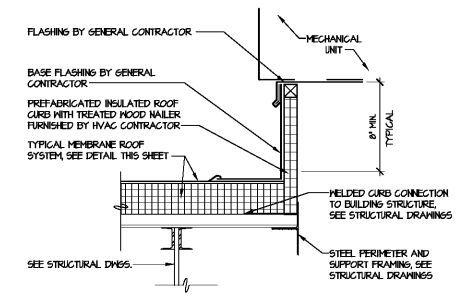
NEW WORK ROOF PLAN
SCALE: 3/32" = 1'-0"

- GENERAL NOTES:**
1. ALL NEW WORK AFFECTING EXISTING TPO ROOF SYSTEM SHALL BE COORDINATED WITH THE LANDLORD TO MAINTAIN THE EXISTING ROOF INTEGRITY.
 2. THE GENERAL CONTRACTOR SHALL COORDINATE THE EXACT SIZE AND LOCATION OF ALL ROOFTOP PENETRATIONS FOR ALL REFRIGERATION, VENTS AND ELECTRICAL CONDUITS THAT PENETRATE THE ROOF SYSTEM. GENERAL CONTRACTOR TO INSTALL & SEAL ALL ROOF PENETRATIONS; SEE DETAILS THIS SHEET FOR ADDITIONAL INFO.
 3. GENERAL CONTRACTOR SHALL BE RESPONSIBLE FOR PAINTING ALL EXPOSED, NON GALV. STEEL ON ROOF TOP ON ALL SIDES ALONG W/ THE ROOF HATCH LADDERS, ETC. COORDINATE WITH STRUCTURAL AND MECHANICAL DRAWINGS.
 4. LOCATE ALL ROOFTOP EQUIPMENT AT 10' OR GREATER FROM EDGE OF ROOF. COORDINATE WITH STRUCTURAL AND MECHANICAL DRAWINGS.
 5. ALL ROOF CONSTRUCTION, WALK PADS, PARAPETS, EQUIPMENT, ASSOCIATED CURBS, AND DAMAGE IS EXISTING TO REMAIN UNLESS INDICATED OTHERWISE. COORDINATE WITH MECHANICAL AND REFRIGERATION DRAWINGS.
 6. GENERAL CONTRACTOR SHALL COORDINATE ANY ABANDONED SATELLITE DISHES AND/OR EQUIPMENT WITH THE HARRIS TEETER PROJECT MANAGER (HTPM).
 7. SEE MECHANICAL DRAWINGS FOR EXTENT OF ROOFTOP EQUIPMENT REMOVAL.

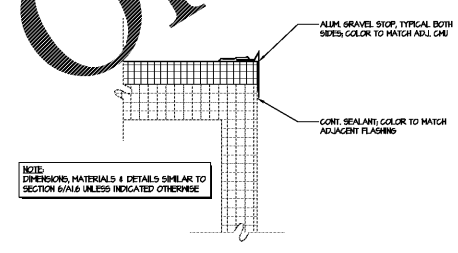
- KEY NOTES:**
1. NEW ROOF TOP EQUIPMENT ON EXISTING CURB (CONDUIT ADAPTERS), SEE MECHANICAL DRAWINGS.
 2. EXISTING ROOF TOP EQUIPMENT TO BE REMOVED, NEW RUBBER CAP AT EXISTING CURB TO REMAIN, SEE DETAIL THIS SHEET FOR ADDITIONAL INFO.
 3. NEW CANOPY; SEE DETAILS ON THIS SHEET.
 4. PREP & PAINT EXISTING ROOFTOP EQUIPMENT (SEE MECHANICAL DRAWINGS); COLOR TO MATCH EXISTING; SEE DETAILS ON SHEET AS SHOWN.
 5. PREP & PAINT EXIST. GALV. ROOF HATCH LADDERS; COLOR TO MATCH EXISTING; SEE FINISH SCHEDULE ON SHEET AS SHOWN.
 6. EXISTING ROOF HATCH TO REMAIN TYPICAL.
 7. EXISTING ROOF HATCH TO REMAIN, REPAIR AS REQUIRED AND PAINT PER SCHEDULE ON SHEET AS SHOWN.
 8. PREP & PAINT EXPOSED GAS PIPING (NOT SHOWN); SEE PLUMBING DRAWINGS & FINISH SCHEDULE ON SHEET AS SHOWN.
 9. NEW PENETRATION SEE DETAIL THIS SHEET, STRUCT. DNOS. & MECH. DNOS.
 10. NEW ROOFTOP EQUIPMENT ON PRE-FAB EQUIPMENT RAILS; SEE MECHANICAL DNOS.
 11. NEW ROOFTOP EQUIPMENT ON NEW CURB; SEE STRUCT. DNOS. & MECH. DNOS.
 12. REMOVE EXISTING ROOFING SYSTEM & INSTALL NEW FULLY ADHERED MEMBRANE ROOFING SYSTEM; SEE DETAILS THIS SHEET.



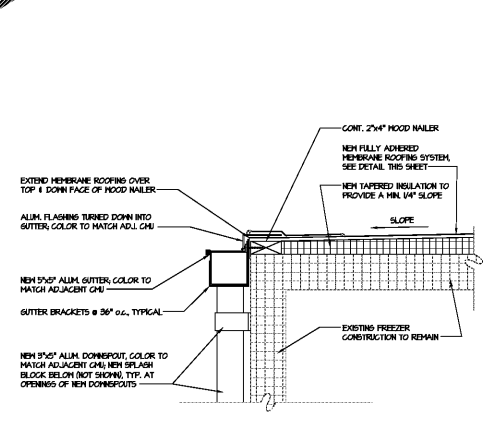
SECTION AT ROOF VENT & CONDUIT (AI.6)
SCALE: 3" = 1'-0"



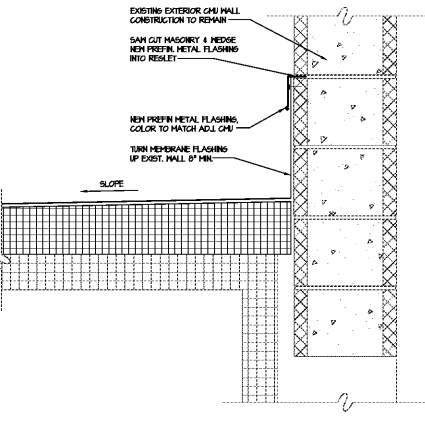
DETAIL - TYPICAL ROOF CURB (AI.6)
SCALE: 1/2" = 1'-0"



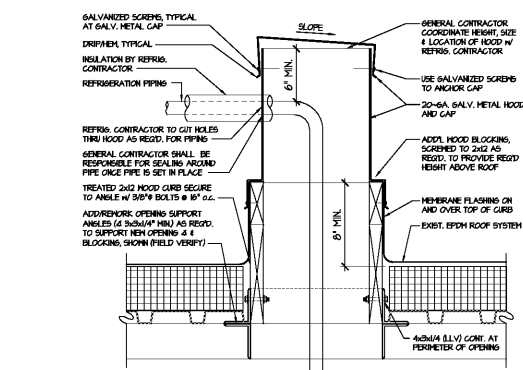
SECTION AT FREEZER ROOF (AI.6)
SCALE: 1/2" = 1'-0"



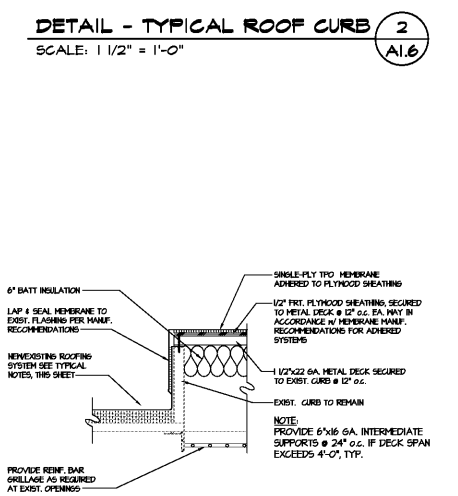
SECTION AT FREEZER ROOF (AI.6)
SCALE: 1/2" = 1'-0"



SECTION AT ROOF PENETRATION (AI.6)
SCALE: 1/2" = 1'-0"



SECTION AT EXIST. OPENING (AI.6)
SCALE: 1" = 1'-0"



SECTION AT EXIST. OPENING (AI.6)
SCALE: 1" = 1'-0"

Design and Construction Documents are the property of Bondurant Associates, Inc. and use of this design and construction information for any project other than the specific project named herein without the written consent of Bondurant Associates, Inc. or its successors in interest. This document may be reproduced, stored in a retrieval system, or transmitted in any form by any means without the written permission of Bondurant Associates, Inc.

Date: SEPTEMBER 10, 2019 Job No. 1922

Revisions:	No.	Date	By	Check



Project: **HARRIS TEETER STORE #289 - REMODEL**
2603 GLENWOOD AVENUE, SUITE 101
RALEIGH, NC 27608
The **NEW WORK ROOF PLAN**