

**KEYED NOTES**

01 PROVIDE CLOSE NIPPLE, SHUT OFF VALVE AND UNION.

02 GAS PIPING ON ROOF SUPPORTED WITH WOOD BLOCKS AT 8'-0" ON CENTER. REFER TO DETAIL 6/PS.1.

03 SENSUS APPLIANCE REGULATOR WITH TEST TEES SET AT 8" W.C. FOR CFH NOTED. PROVIDE -RV (OVERPRESSURE PROTECTION DEVICE), PIPE RELIEF UP WITH RETURN BEND ON END OF DISCHARGE.

**GENERAL NOTES**

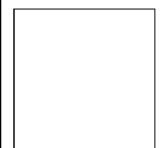
- REFER TO SHEET P1.1 FOR ADDITIONAL GENERAL NOTES.
- ALL GAS CONNECTIONS TO EQUIPMENT SHALL HAVE UNIONS, SEDIMENT TRAPS AND GAS COCKS. REFER TO TYPICAL DETAIL 5/PS.1.
- PROVIDE TEES, VALVES AND CAP AT DISCHARGE OF EACH REGULATOR FOR MANMETER CONNECTIONS TO VERIFY WATER COLUMN.
- PIPE DISCHARGE FROM REGULATOR A MINIMUM OF 10' AWAY FROM FRESH AIR INTAKE WITH RETURN BEND ON DISCHARGE.
- PIPE RELIEF FROM REGULATOR A MINIMUM OF 10' AWAY FROM SPARK IGNITION.
- PAINT ALL EXPOSED GAS PIPING ON ROOF, INCLUDING UNDERSIDE OF PIPING, WITH HIGH GLOSS YELLOW AND LABEL PIPING "STORE SUPPLY" WITH A NON-FLUORESCENT PAINT. (REFER TO ARCHITECTURAL DRAWINGS AND SPECIFICATION FOR ADDITIONAL REQUIREMENTS).
- CLEAN, SAND AND PAINT ALL EXPOSED GAS PIPING AND DELI COATING HOOD TO MATCH WALL TILE WITH HARRIS TEETER PROJECT MANAGER.
- PLUMBING CONTRACTOR SHALL REPAIR ALL HARRIS TEETER MAINTENANCE NOTED GAS PIPING LEAK LOCATIONS WHICH ARE IDENTIFIED WITH "REPAIR" WITHIN THEIR BASE BID. THE PLUMBING CONTRACTOR SHALL NOTIFY THE HARRIS TEETER PROJECT MANAGER IF THERE ARE NO LOCATIONS NOTED ON THE EXISTING GAS PIPING AT LEAST ONE WEEK PRIOR TO THE BID DATE FOR VERIFICATION OF NO GAS LEAKS WITH HARRIS TEETER MAINTENANCE.
- THE ENTIRE GAS PIPING SYSTEM SHALL BE LEAK CHECKED BY THE PLUMBING CONTRACTOR AND WITNESSED BY COCHISENES, P.C. AT THE TIME OF PROJECT COMPLETION. ANY LEAKS IDENTIFIED SHALL BE PROMPTLY REPAIRED BY THE PLUMBING CONTRACTOR.
- REPAIR LEAKS AND DEFECTS WITH NEW MATERIALS AND RETEST SYSTEM UNTIL SATISFACTORY RESULTS ARE OBTAINED. VERIFICATION OF REPAIR OF ALL LEAKS TO BE DONE PRIOR TO REPAINTING OF THE GAS PIPING.
- REPORT TEST RESULTS PROMPTLY AND IN WRITING TO HARRIS TEETER, ARCHITECT AND AUTHORITIES HAVING JURISDICTION.
- PLUMBING CONTRACTOR SHALL RESET/REPLACE ALL EXISTING GAS SUPPORTS AS REQUIRED TO BE LOCATED 8'-0" O.C. AND PROPERLY ALIGNED WITH GAS PIPING.

Design and Construction Documents are instruments of service and when in confidence and remain the property of Bondurant Associates, Inc. No part of these construction documents shall be reproduced, stored in a retrieval system, or transmitted in any form or by any means without the written permission of Bondurant Associates.

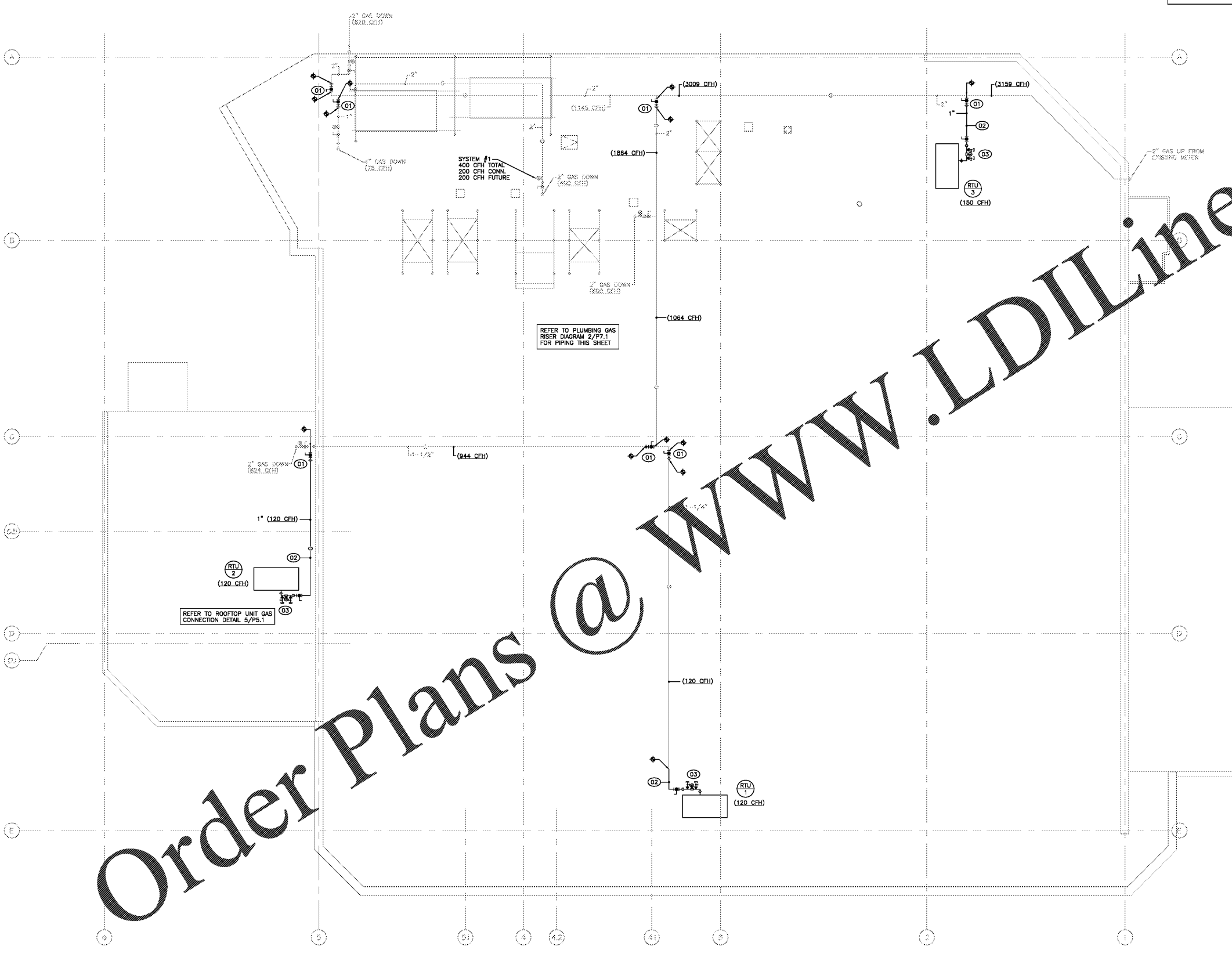
Date: SEPTEMBER 10, 2019 Job No. 1922

Revisions:

No.	Date	By	Check



**Project** HARRIS TEETER STORE #289 ~ REMODEL  
 2803 GLENWOOD AVENUE, SUITE 101  
 RALEIGH, NC 27608  
**Title** PLUMBING ROOF PLAN



WWW.LDILine.com

Order Plans @

**GAS LOAD (CFH)**

EQUIPMENT	LOAD (CFH)
EXISTING EQUIPMENT	
HEATING	1005
COOKING	924
GENERATOR	670
WATER HEATER	400
EXISTING STORE LOAD TOTAL	2899
DEMOLISHED EQUIPMENT	
HEATING	130
WATER HEATER	400
TOTAL	530
NEW EQUIPMENT	
WATER HEATER	200
FUTURE	200
HEATING	390
TOTAL	790
NEW STORE LOAD TOTAL	3159
INCREASE IN LOAD	260

EXISTING 2 PSI SYSTEM AT 350' E.L.  
 (SIZING BASED ON TABLE 402.4(5) OF 2018 NC FUEL GAS CODE)

SYSTEM #1 20" E.L. AT 8" W.C. FOR 400 CFH  
 (SIZING BASED ON TABLE 402.4(1) OF 2018 NC FUEL GAS CODE)

**GAS FIRED EQUIPMENT SCHEDULE**

TAG	DESCRIPTION	CFH
RTU-1	NEW ROOF TOP UNIT	120
RTU-2	NEW ROOF TOP UNIT	120
RTU-3	NEW ROOF TOP UNIT	150
DF-1	EXISTING DUCT HEATER	800
UH-1	EXISTING UNIT HEATER	75
WH-1	NEW WATER HEATER	200
RO-1	EXISTING RACK OVEN	250
FR-1	EXISTING FRYER	300
CV-1	EXISTING CONNECTION OVEN	34
RT-1	EXISTING ROTISSERIE	240
	EXISTING GENERATOR	670
	FUTURE	200
	<b>TOTAL CONNECTED GAS LOAD</b>	<b>3159.0</b>

**PLUMBING ROOF PLAN**

0' 2' 4' 8' 16'

SCALE: 1/8"=1'-0"

9/10/19



NOTE: THIS DOCUMENT MAY HAVE BEEN ELECTRONICALLY TRANSMITTED. IF UNSIGNED, IT CANNOT BE FILED FOR PUBLIC RECORD. PUBLIC RECORD FILINGS REQUIRE SIGNED AND SEALED DOCUMENTS.