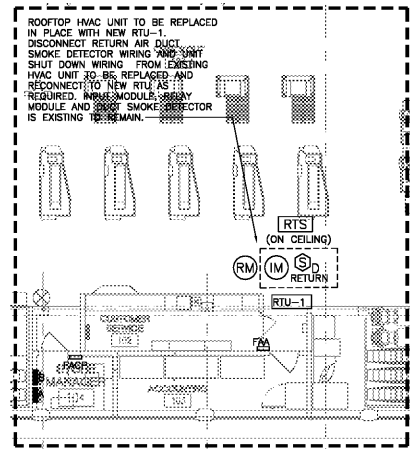
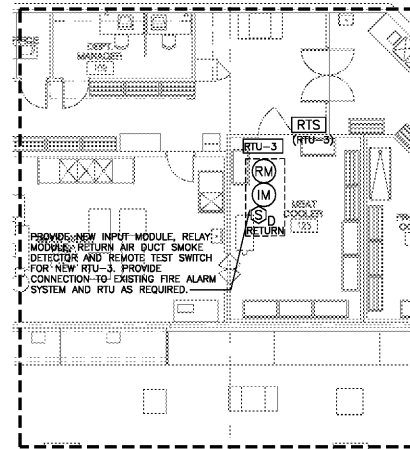


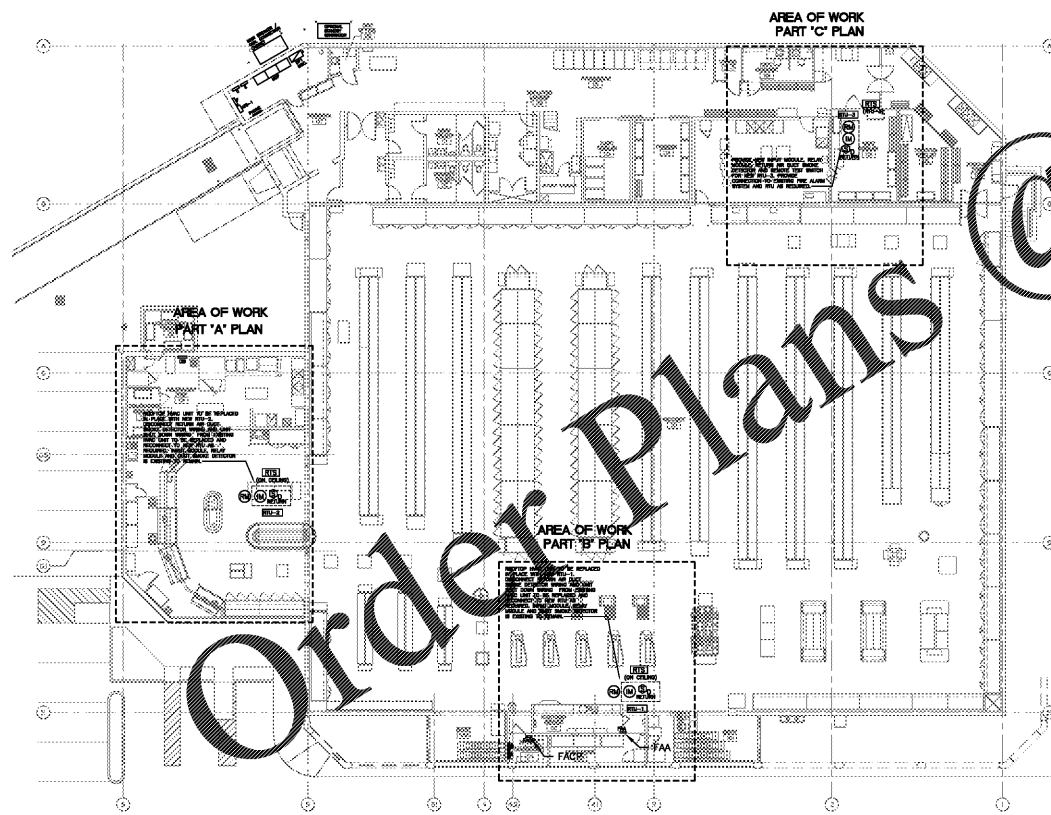
**PARTIAL FIRE ALARM RENOVATION PLAN "A"**  
SCALE: 1/8"=1'-0"  
N



**PARTIAL FIRE ALARM RENOVATION PLAN "B"**  
SCALE: 1/8"=1'-0"  
N



**PARTIAL FIRE ALARM RENOVATION PLAN "C"**  
SCALE: 1/8"=1'-0"  
N



**KEY PLAN**  
SCALE = 1/16" = 1'-0"  
N

**NOTE:**

THE FIRE/SECURITY CONTRACTOR, IS CONTRACTED BY HARRIS TEETER. THE ELECTRICAL CONTRACTOR SHALL THOROUGHLY COORDINATE WITH THE FIRE/SECURITY CONTRACTOR TO DETERMINE THE EXACT CONDUIT AND WIRING REQUIREMENTS PRIOR TO THE ROUGH-IN OF ANY CONDUIT AND WIRING.

**GENERAL NOTES:**

- ELECTRICAL CONTRACTOR SHALL PROVIDE AND INSTALL CONDUIT SYSTEM WITH PULLWIRE AND ANY REQUIRED JUNCTION BOXES FOR MOUNTING OF FIRE AND SECURITY ALARM DEVICES. COORDINATE EXACT LOCATION AND BOX REQUIREMENTS WITH THE FIRE/SECURITY ALARM CONTRACTOR AND DETAILS ON DRAWING F1.1 PRIOR TO ROUGH-IN. ELECTRICAL CONTRACTOR SHALL PROVIDE 3/4" CONDUIT WITH PULLWIRE FROM ALL JUNCTION BOX LOCATIONS TO 6" BELOW BAR JOIST OR 12" ABOVE DROP CEILING IF AVAILABLE. PROVIDE 90° ELBOW AND INSULATED BUSHING ON END FOR FUTURE USE BY THE FIRE/SECURITY ALARM CONTRACTOR.
- FIRE ALARM CONTRACTOR SHALL UTILIZE WHITE FIRE ALARM CABLE FOR FIRE ALARM SYSTEM. INSTALL CABLE PER NATIONAL ELECTRICAL CODE AND ALL STATE AND LOCAL CODES HAVING JURISDICTION. CABLE SHALL BE RUN PARALLEL TO PERPENDICULAR TO BUILDING STRUCTURE. ROUTE CABLES ABOVE BOTTOM CORD OF JOISTS, CONCEALED TO MAXIMUM EXTENT POSSIBLE.
- FIRE ALARM/SECURITY CONTRACTOR SHALL PROVIDE A DRAWING, AT BOTH THE FIRE ALARM PANEL AND REMOTE ANNUNCIATOR PANEL, SHOWING THE LOCATIONS OF ALL FIRE ALARM DEVICES.
- REFER TO THIS DRAWING FOR FIRE ALARM SYSTEM MATRIX SEQUENCE OF OPERATIONS AND ADDITIONAL INFORMATION.
- REFER TO THIS DRAWING FOR FIRE ALARM AND SECURITY DEVICE INSTALLATION REQUIREMENTS.
- DEVICES IN AREAS OUTSIDE THE AREAS OF RENOVATION MAY NOT BE SHOWN.
- COORDINATE WITH THE HTPM AND STORE MANAGER FOR ANY OUTAGES REQUIRED FOR THE RENOVATION OF THE FIRE ALARM OR SECURITY SYSTEM.
- THE FIRE ALARM AND SECURITY SYSTEM SHALL REMAIN FULLY FUNCTIONAL THROUGHOUT THE COURSE OF THE ENTIRE RENOVATION.
- REMOVE AND REINSTALL ANY FIRE ALARM OR SECURITY DEVICES AS REQUIRED FOR THE REPAIR OR RENOVATION OF ANY WALL OR CEILING SURFACE.
- NEW INITIATING DEVICES AND DETECTORS/PLANS SHALL BE U.L. LISTED FOR USE WITH THE EXISTING FIRE ALARM SYSTEM.

**FIRE ALARM LEGEND**

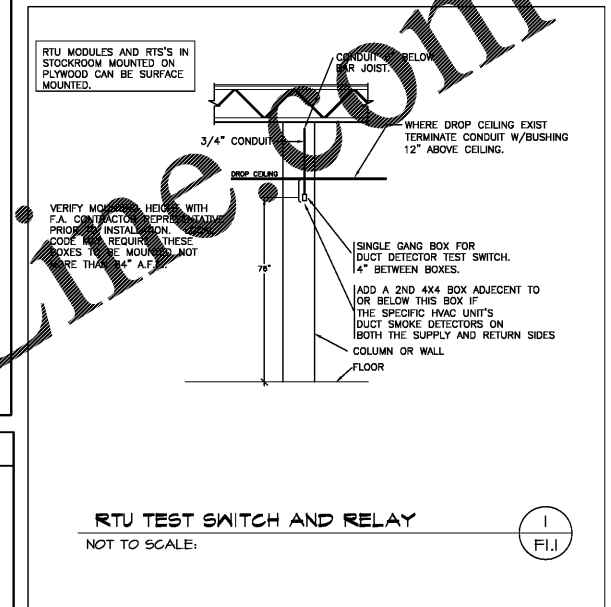
- [FACP] FIRE ALARM SYSTEM - CONTROL PANEL
- [FAR] FIRE ALARM SYSTEM - REMOTE ANNUNCIATOR PANEL
- [FA] FIRE ALARM SYSTEM - ANSUL HOOD SYSTEM ACTIVATION
- [X75] FIRE ALARM SYSTEM - CEILING MOUNTED HORN STROBE
- [X75] FIRE ALARM SYSTEM - WALL MOUNTED HORN STROBE
- [S<sub>D</sub>] FIRE ALARM SYSTEM - DUCT SMOKE DETECTOR
- [X75] FIRE ALARM SYSTEM - HOOD ANSUL SYSTEM INPUT
- [M] FIRE ALARM SYSTEM - POINT OF PROTECTION INPUT TRANSDUCER
- [RM] FIRE ALARM SYSTEM - RELAY MODULE
- [RTS] FIRE ALARM SYSTEM - DUCT DETECTOR REMOTE TEST SWITCH

**AREA OF WORK PLAN**

REFERENCE SHEET C1.2 - AREA OF WORK PLAN FOR DELINEATION OF INDIVIDUAL WORK AREAS WITHIN THE PROJECT.

**FIRE ALARM - RESPONSIBILITY CHART**

DESCRIPTION	RESPONSIBILITY		
	EC	FAC	HWAC-C
FIRE ALARM SYSTEM			
FIRE ALARM AND SECURITY DEVICES		F/I	
FIRE ALARM AND SECURITY PANELS		F/I	
FIRE ALARM AND SECURITY WIRING		F/I/T	
POWER CONDUIT/JUNCTION BOXES/WIRING	F/I/T		I
HWAC DUCT SMOKE DETECTOR	F/I	F	T
HWAC DUCT SMOKE DETECTOR/HWAC Unit Control Wiring		F/I/T	
COMPLETE FIELD TESTING OF THE FIRE ALARM SYSTEM		F	
CONDUIT SYSTEM FOR ALL FIRE ALARM DEVICES WITH PULL WIRES	F/I		
FIRE MARSHAL KNOCK BOX PROVIDED AND INSTALLED BY THE GENERAL CONTRACTOR			
RTU - MANUAL SHUTDOWN SWITCH		F/I/T	
FAC - FIRE/SECURITY CONTRACTOR			
HWAC-C - MECHANICAL CONTRACTOR			
EC - ELECTRICAL CONTRACTOR			
F - Furnish			
I - Install			
T - Terminate Wiring at Equipment			



Design and Construction Documents are instruments of service as given in accordance with the terms and conditions of the contract. These construction documents are prepared by Harris Teeter and are not to be used for any other project without the written consent of Harris Teeter. No part of this document may be reproduced, stored in a retrieval system, or transmitted in any form or by any means without the written permission of Harris Teeter.

Date: SEPTEMBER 10, 2019 Job No. 1922

Revisions:	No.	Date	By	Check

**BONDURANT ASSOCIATES**  
ENGINEERING & ARCHITECTURE  
444 CHAYKORF STREET  
PORTSMOUTH, VIRGINIA

**BRAND ENGINEERING, INC.**  
NC LICENSE NO. C-1504  
2840 POLO PARKWAY, SUITE 200  
MIDLOTHIAN, VA 23103  
PHONE: (804) 794-8588  
FAX: (804) 794-8588  
EMAIL: brand@brandeng.com

**Harris Teeter**  
Neighborhood Food & Pharmacy

Project: **HARRIS TEETER STORE #289 - REMODEL**  
2603 GLENWOOD AVENUE, SUITE 101  
RALEIGH, NC 27608  
Title: **FIRE ALARM RENOVATION PLAN**



NOTE: THIS DOCUMENT MAY HAVE BEEN ELECTRONICALLY TRANSMITTED. IF UNSIGNED, IT CANNOT BE FILED FOR PUBLIC RECORD. PUBLIC RECORD FILINGS REQUIRE SIGNED AND SEALED DOCUMENTS.