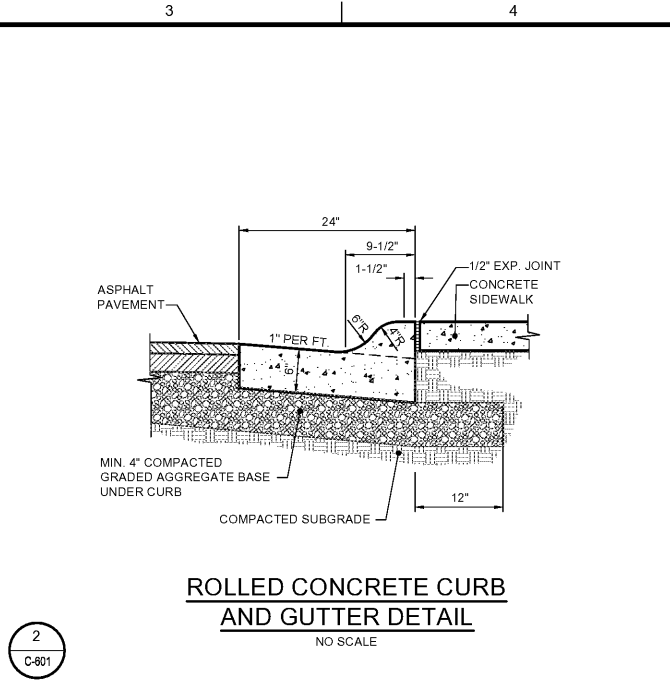


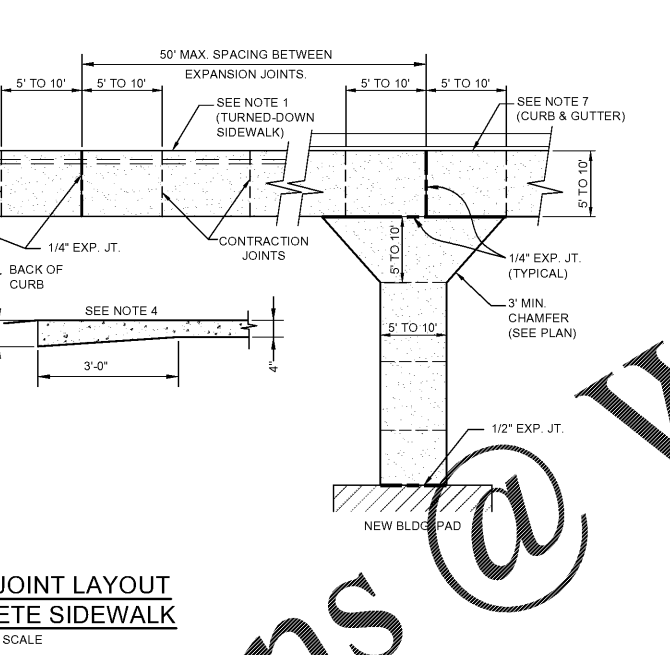
**TYPICAL SECTION THRU LIGHT-DUTY PAVEMENT AND BASE**  
NO SCALE



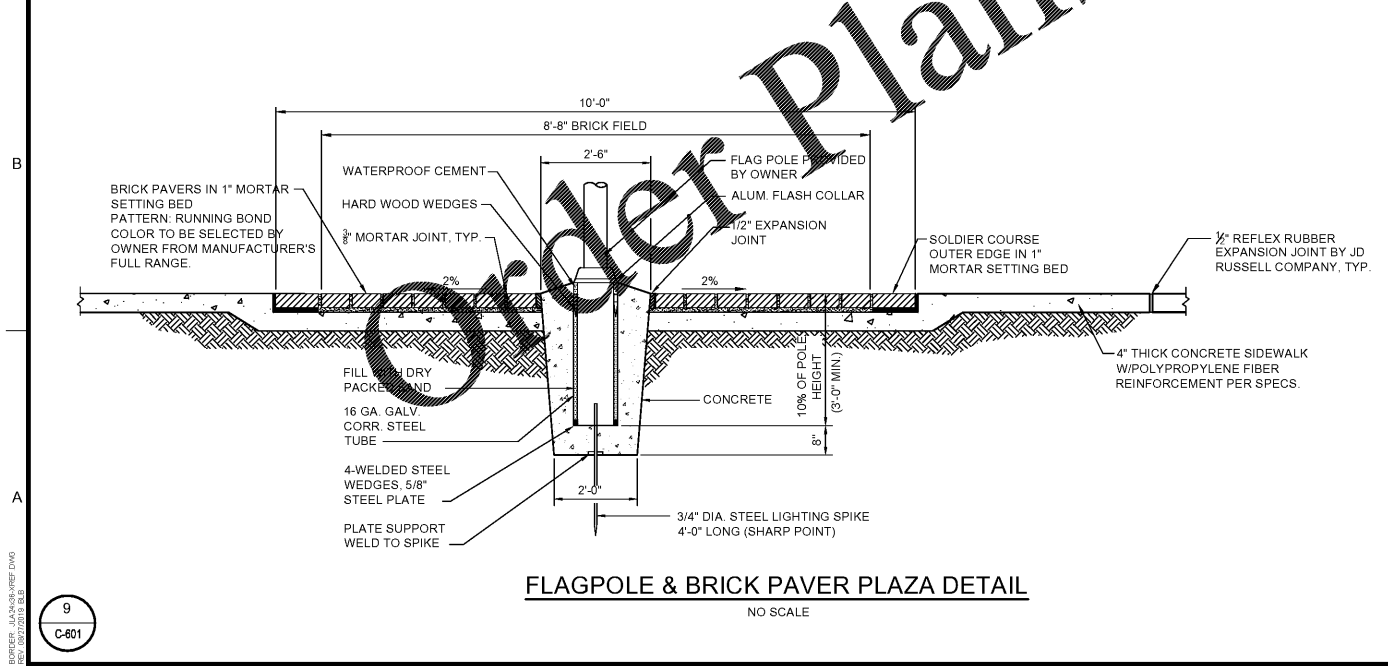
**ROLLED CONCRETE CURB AND GUTTER DETAIL**  
NO SCALE

**NOTES:**

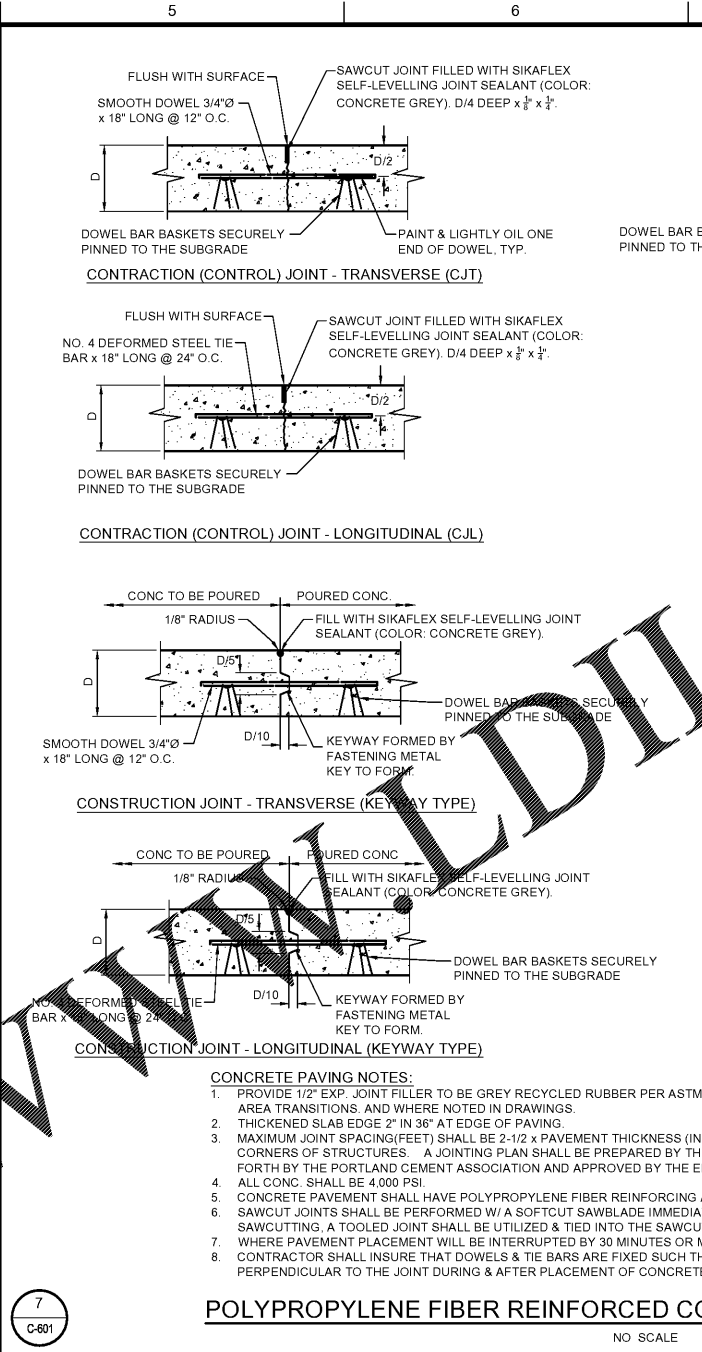
- ALL SIDEWALKS SHALL BE 4\"/>
- CONTRACTION JOINTS SHALL BE PLACED AT 6\"/>
- CONSTRUCT 1/4\"/>
- WHEN THE SIDEWALK ABUTS A ROADWAY OR WHERE THERE IS NO CURB, THICKEN THE SIDEWALK TO 6\"/>
- INSTALL 1/2\"/>
- A LAYER OF 15# FELT IS REQUIRED BETWEEN WALK AND ADJACENT PARALLELING CONCRETE CURB.
- CONSTRUCT WHEELCHAIR RAMP AND DETECTABLE WARNING PER GEORGIA D.O.T. AND ADA STANDARDS (SEE SITE PLAN FOR TYPE).
- ALL CONCRETE SHALL BE 3,000 PSI.
- SIDEWALK CROSS SLOPE NOT TO EXCEED 2.0%.
- CONCRETE SIDEWALK SHALL HAVE POLYPROPYLENE FIBER REINFORCING AT A RATE OF 1.5#/CY.
- PROVIDE 1/2\"/>



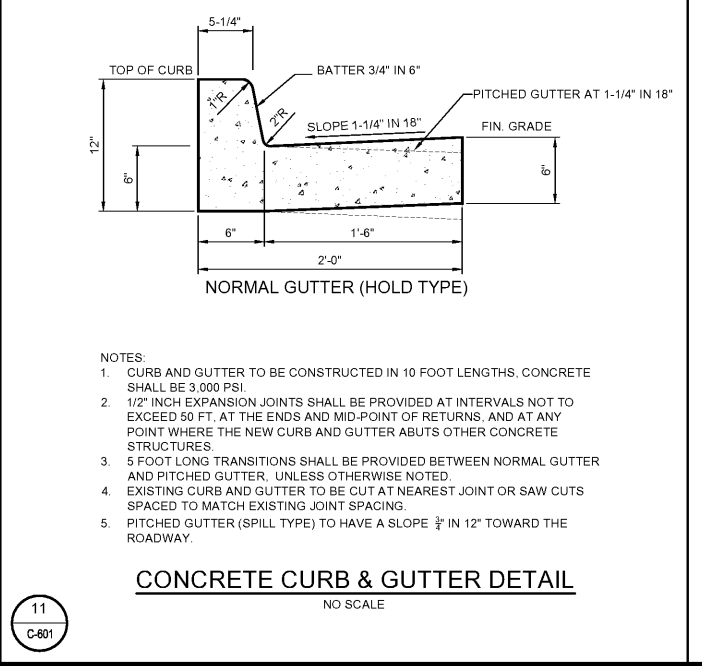
**STANDARD JOINT LAYOUT FOR CONCRETE SIDEWALK**  
NO SCALE



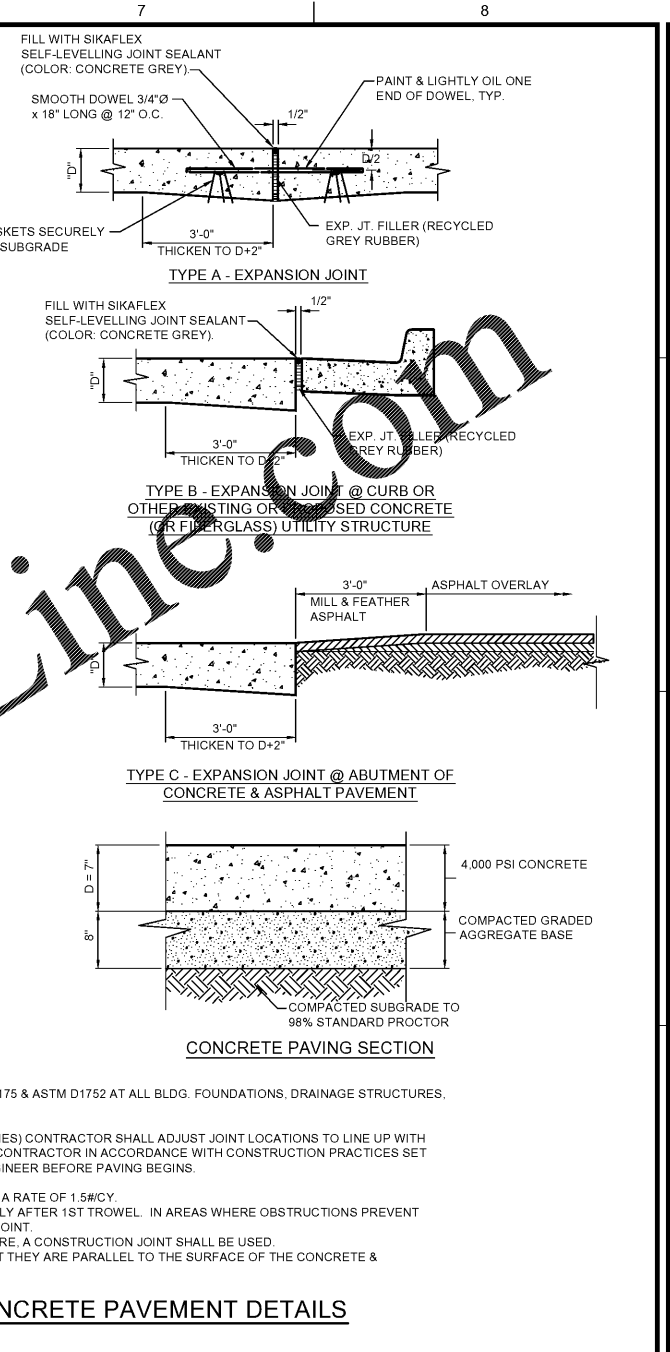
**FLAGPOLE & BRICK PAVER PLAZA DETAIL**  
NO SCALE



**POLYPROPYLENE FIBER REINFORCED CONCRETE PAVEMENT DETAILS**  
NO SCALE



**CONCRETE CURB & GUTTER DETAIL**  
NO SCALE

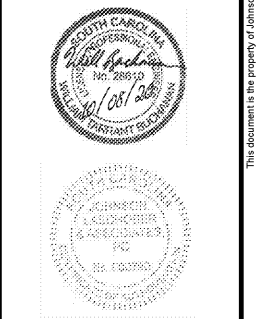


**CONCRETE PAVING SECTION**

**CONCRETE PAVING NOTES:**

- PROVIDE 1/2\"/>
- AREA TRANSITIONS, AND WHERE NOTED IN DRAWINGS.
- THICKENED SLAB EDGE 2\"/>
- MAXIMUM JOINT SPACING (FEET) SHALL BE 2-1/2 x PAVEMENT THICKNESS (INCHES) CONTRACTOR SHALL ADJUST JOINT LOCATIONS TO LINE UP WITH CORNERS OF STRUCTURES. A JOINTING PLAN SHALL BE PREPARED BY THE CONTRACTOR IN ACCORDANCE WITH CONSTRUCTION PRACTICES SET FORTH BY THE PORTLAND CEMENT ASSOCIATION AND APPROVED BY THE ENGINEER BEFORE PAVING BEGINS.
- ALL CONC. SHALL BE 4,000 PSI.
- CONCRETE PAVEMENT SHALL HAVE POLYPROPYLENE FIBER REINFORCING AT A RATE OF 1.5#/CY.
- SAWCUT JOINTS SHALL BE PERFORMED W/ A SOFT CUT SAWBLADE IMMEDIATELY AFTER 1ST TROWEL. IN AREAS WHERE OBSTRUCTIONS PREVENT SAWCUTTING, A TOOLED JOINT SHALL BE UTILIZED & TIED INTO THE SAWCUT JOINT.
- WHERE PAVEMENT PLACEMENT WILL BE INTERRUPTED BY 30 MINUTES OR MORE, A CONSTRUCTION JOINT SHALL BE USED.
- CONTRACTOR SHALL INSURE THAT DOWELS & TIE BARS ARE FIXED SUCH THAT THEY ARE PARALLEL TO THE SURFACE OF THE CONCRETE & PERPENDICULAR TO THE JOINT DURING & AFTER PLACEMENT OF CONCRETE.

CITY OF NORTH AUGUSTA, SC  
100 GEORGIA AVENUE, NORTH AUGUSTA, SC 29841  
PROJECT NAME: **NORTH AUGUSTA FIRE STATION 1 RELOCATION**  
PROJECT LOCATION: 311 W. MARTINTOWN ROAD, NORTH AUGUSTA, SC 29841



REV	DATE	BY	DESCRIPTION
0	10/08/20	WTB	ISSUED FOR BID

PROJECT NO. 3057.2003  
DRAWN BY: JNR  
CHECKED BY: WTB  
DATE: 10/08/2020

**SITE DETAILS (SHT. 1 OF 8)**

SCALE: AS NOTED  
DRAWING NO. **C-601**  
REV. 0

This document is the property of Johnson, Laschober & Associates, P.C. The unauthorized reproduction, copying or otherwise use of this document is strictly prohibited and any infringement thereupon may be subject to legal action.