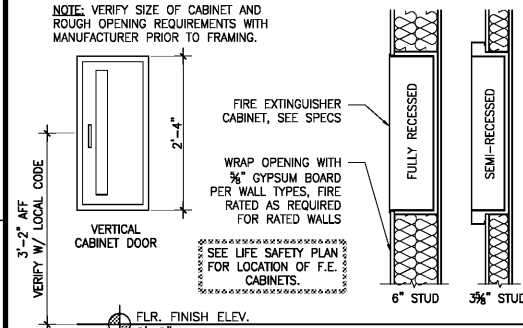


GENERAL LIFE SAFETY NOTES

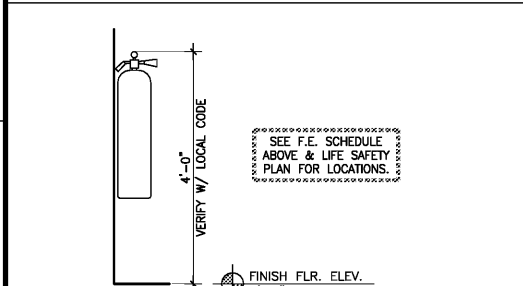
- FIRESTOP AROUND ALL PIPE, CONDUIT, DUCTWORK AND ANY OTHER PENETRATIONS THROUGH RATED WALLS. PENETRATIONS OF NON-RATED PARTITIONS AND FLOORS SHALL BE FIRESTOPPED WITH NON-COMBUSTIBLE MATERIAL.
- ALL FIRE RATED PARTITIONS MUST BE STENCILED WITH RED SPRAY PAINT IN THE CONCEALED SPACE ABOVE THE CEILING WITH THE WORDS: "FIRE AND SMOKE BARRIER" 12" HIGH. STENCILING SHALL BE APPLIED AT 20'-0" O.C. STAGGER THE STENCILING ON OPPOSITE CORRIDOR WALLS. SEE SHEET A-002.
- PROVIDE NON COMBUSTIBLE BLOCKING SECURELY ANCHORED IN ALL WALLS BEHIND ALL TOILET ACCESSORIES, BASE CABINETS, WALL CABINETS, VISUAL DISPLAY BOARDS AND ALL OTHER SURFACE MOUNTED ITEMS. PROVIDE NON COMBUSTIBLE FRAMING SECURELY ANCHORED TO WALL FRAMING TO PROVIDE ANCHORING SURFACE FOR ITEMS RECESSED IN WALLS.
- COORDINATE ALL WALL FINISHES, IE GYP. BD.-PAINTED, BACKER BD.-TILE, WITH SHEET A-601 PRIOR TO INSTALLATION.
- PARTITIONS THAT TERMINATE JUST ABOVE THE FINISH CEILING MUST BE BRACED WITH ALTERNATING ANGLED KICKER STUDS AT 4'-0" O.C. THAT EXTEND FROM THE TOP OF THE PARTITION TO THE BUILDING STRUCTURE AND BE SECURELY ANCHORED.
- FURR WALLS AROUND FIRE EXTINGUISHER CABINETS AS REQUIRED. SEE FLOOR PLAN FOR FIRE EXTINGUISHER LOCATIONS.
- VERIFY QUANTITY AND LOCATION OF FIRE EXTINGUISHERS. PROVIDE FIRE EXTINGUISHER WITH WALL MOUNT WHERE FE IS NOTED ON PLANS. PROVIDE FIRE EXTINGUISHER & CABINET WHERE FEC IS NOTED ON PLANS. SEE SPECIFICATIONS FOR REQUIREMENTS FOR ALL FIRE EXTINGUISHERS & CABINETS. COORDINATE ANY CHANGE OF FE OR FEC LOCATION WITH ARCHITECTS.

FIRE EXTINGUISHER SCHEDULE

- FIRE EXTINGUISHER WITH FULL-RECESSED CABINET
LOCATIONS: VESTIBULE-101 (1) and HALL-115 (1)
- FIRE EXTINGUISHER WITH SEMI-RECESSED CABINET
LOCATIONS: KITCHEN-130 (1)
- FIRE EXTINGUISHER, SURFACE MOUNTED
LOCATIONS: APPARATUS BAYS (3), MEZZANINE (1)



5 FIRE EXTINGUISHER CABINET (FEC)
SCALE: N.T.S. (RECESSED)



6 FIRE EXTINGUISHER (F.E.)
SCALE: N.T.S. (SURFACE MOUNTED)

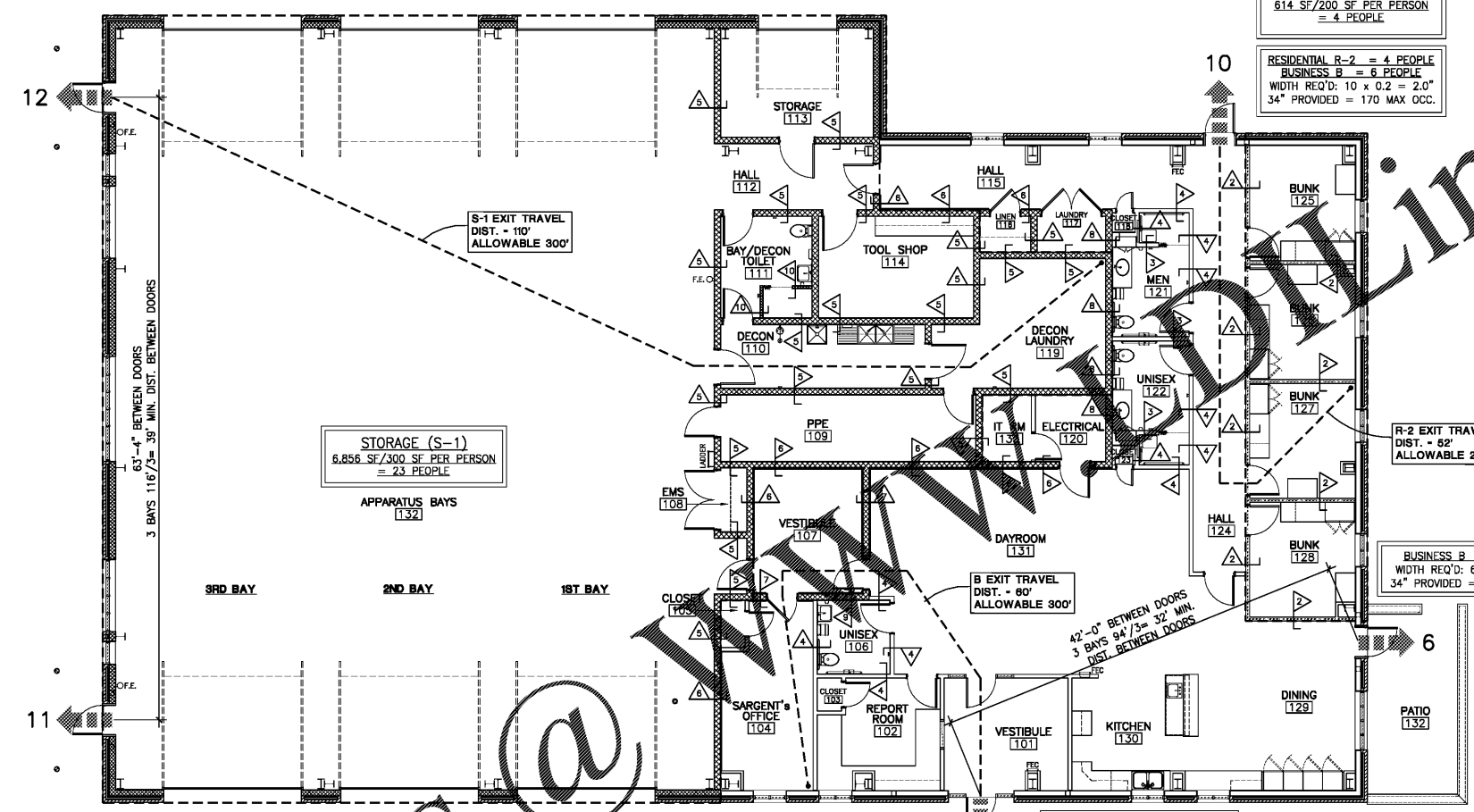
LEGEND:

X	EXIT DISCHARGE	SMOKE DETECTOR (SEE ELECTRICAL DRAWINGS)
FEC	FIRE EXTINGUISHER CABINET, SEE PLAN ON THIS SHEET	WALL TYPE (SEE SHEET A-003)
F.E.	FIRE EXTINGUISHER-SURFACE MOUNTED, SEE PLAN ON THIS SHEET	45-MIN. RATED DOOR, SEE DOOR TYPES ON SHEET A-603
(O.L. = XX)	OCCUPANT LOAD	PANIC HARDWARE LOCATIONS
EXIT SIGN	(SEE ELECTRICAL DRAWINGS)	

WALL SYMBOL	WALL RATING	WALL HEIGHT	COMMENTS
(Symbol)	1-HOUR	ALL THE WAY TO THE UNDERSIDE OF ROOF	SEE SHEETS A-003
(Symbol)	NON-RATED		

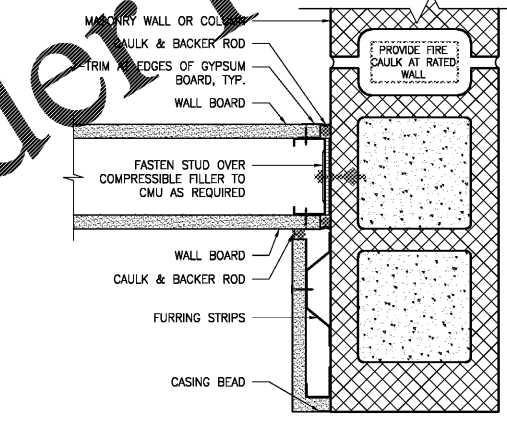
NOTES:
1. ALL WALLS ARE TYPE-1, U.N.O. IN THE PLAN.
2. SEE SHEET A-003 FOR WALL TYPES AND NOTES.
3. SEE FINISH PLAN A-601 FOR ALL WALL FINISHES

STORAGE S-2 = 12 PEOPLE
WIDTH REQ'D: 12 x 0.2 = 2.4'
34" PROVIDED = 170 MAX OCC.

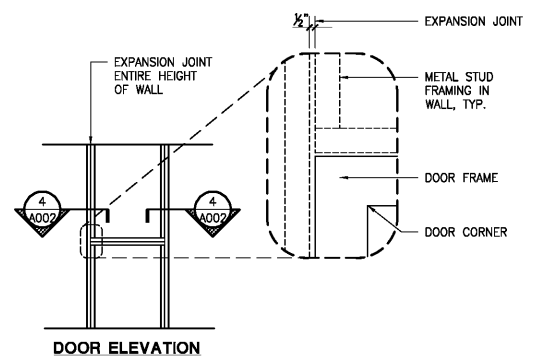


STORAGE S-2 = 11 PEOPLE
WIDTH REQ'D: 11 x 0.2 = 2.2'
34" PROVIDED = 170 MAX OCC.

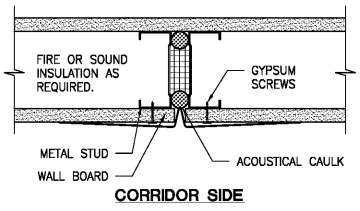
1 LIFE SAFETY PLAN
SCALE: 1/8" = 1'-0"



2 EXPANSION JOINT @ GYP. BD. & CMU WALL
SCALE: NOT TO SCALE



3 LOCATION FOR EXPANSION JOINT @ CORRIDOR DOORS
SCALE: NOT TO SCALE

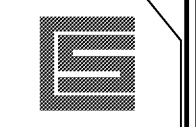
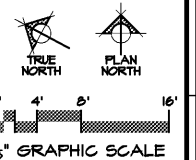


4 EXPANSION JOINT AT WALL BOARD
SCALE: NOT TO SCALE

2 MEZZANINE LIFE SAFETY PLAN
SCALE: 1/8" = 1'-0"



GENERAL NOTES:
ALL NOTES APPLY TO ALL DRAWINGS AND ALL TRADES. IT IS THE RESPONSIBILITY OF ALL CONTRACTORS AND TRADES TO COORDINATE THE INSTALLATION OF THEIR WORK WITH THE INSTALLATION OF WORK BY ALL OTHER CONTRACTORS AND TRADES. THE REQUIREMENTS OF THE DRAWINGS, GENERAL REQUIREMENTS AND ALL ITEMS OF THE CONTRACT DOCUMENTS ARE EQUALLY BINDING ON ALL CONTRACTORS AND TRADES. EACH CONTRACTOR IS REQUIRED TO MAINTAIN FULL SETS OF THE CONTRACT DOCUMENTS FOR HIS EMPLOYEES USE ON THE PROJECT TO ASSURE THAT ALL WORK IS PROPERLY COORDINATED AND INSTALLED WITH THE WORK OF OTHER CONTRACTORS AND TRADES.
WHENEVER THERE ARE DISCREPANCIES BETWEEN DRAWINGS OR BETWEEN THE DRAWINGS AND SPECIFICATIONS, OR CONFLICTS WITHIN THE SPECIFICATIONS AND/OR DRAWINGS, AND SUCH DISCREPANCY IS NOT CALLED TO THE ARCHITECT'S ATTENTION IN TIME TO PERMIT CLARIFICATION BY ADDENDUM, THE CONTRACTOR SHALL BE RESPONSIBLE FOR RESOLVING THE BETTER QUALITY OR GREATER AMOUNT OF WORK OR MATERIAL CALLED FOR. SHALL SUBMIT A WRITTEN STATEMENT WITH HIS PROPOSAL NOTING SUCH DISCREPANCIES, AND SHALL SO FURNISH AND INSTALL SUCH BETTER QUALITY OR GREATER QUANTITY UNLESS OTHERWISE ORDERED IN WRITING.



Stewart-Cooper-Newell Architects
Tel. 704.865.6311
www.scn-architects.com

JJA
Since 1980
Architects • Engineers • Landscape Architects
JOHNSON, LASCHOBER & ASSOCIATES, P.C.
AUGUSTA, GA • MT. PLEASANT, SC
TEL. (706) 724-5756 • TEL. (843) 619-4656
FAX (706) 724-3955
WWW.THEJLAGROUP.COM

CITY OF NORTH AUGUSTA, SC
100 GEORGIA AVENUE, NORTH AUGUSTA, SC 29841
PROJECT NAME:
**NORTH AUGUSTA
FIRE STATION 1 RELOCATION**
PROJECT LOCATION:
311 W. MARTINTOWN ROAD, NORTH AUGUSTA, SC 29841

STEWART-COOPER-NEWELL ARCHITECTS, P.C.
REGISTERED ARCHITECTS
CERT. NO. C-82008
GASTONIA, NC

STATE OF SOUTH CAROLINA
KENNETH CHARLES NEWELL
GASTONIA, NC 04827
09/28/2020
REGISTERED ARCHITECT

REV.	DATE	BY	ISSUED FOR	DESCRIPTION
0	10/08/20	KCN	BY	

PROJECT NO. 3057.2003 (1676)
DRAWN BY: GYS / GEC
CHECKED BY: KCN
DATE: 10/08/2020
SHEET TITLE:
LIFE SAFETY PLAN

SCALE: AS NOTED
DRAWING NO. **A-002** REV. **0**