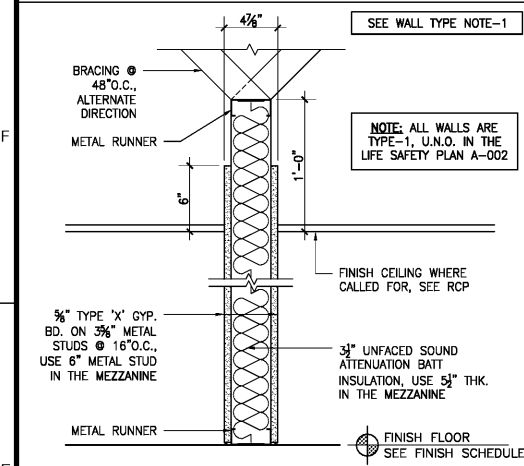
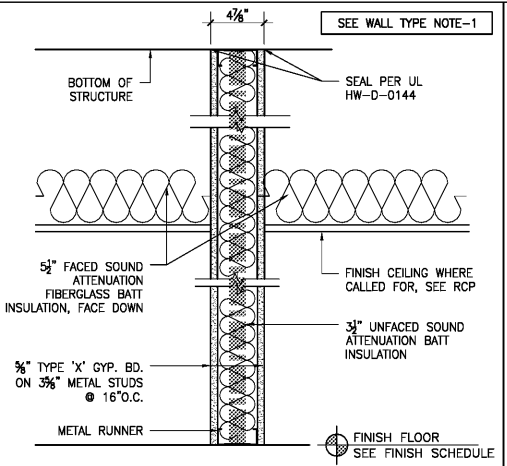


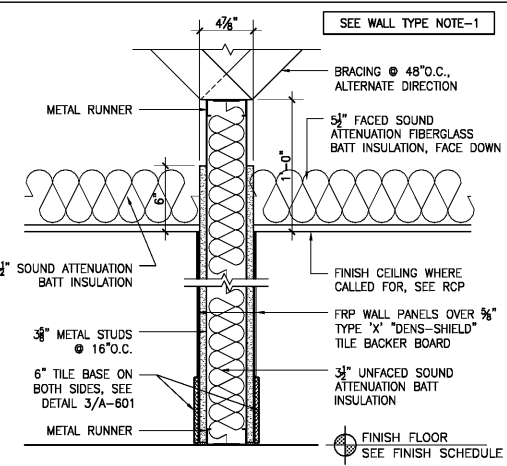
WALL TYPES:



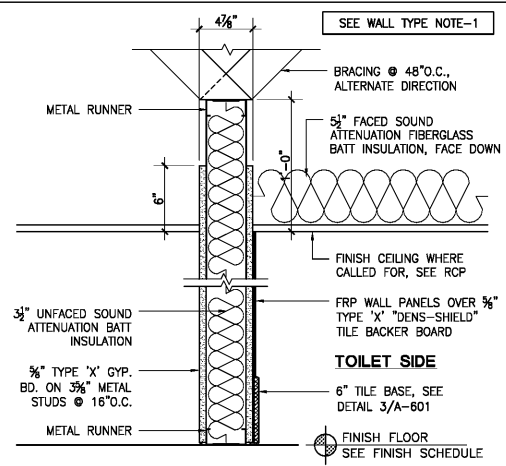
1 NON-RATED 3-5/8" METAL STUD WALL
SCALE: 1-1/2" = 1'-0" (USE 6" METAL STUD IN THE MEZZ.)



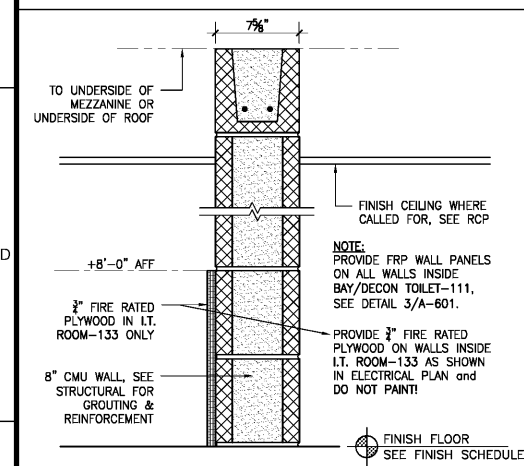
2 1-HR RATED 3-5/8" METAL STUD WALL
SCALE: 1-1/2" = 1'-0" UL: U465



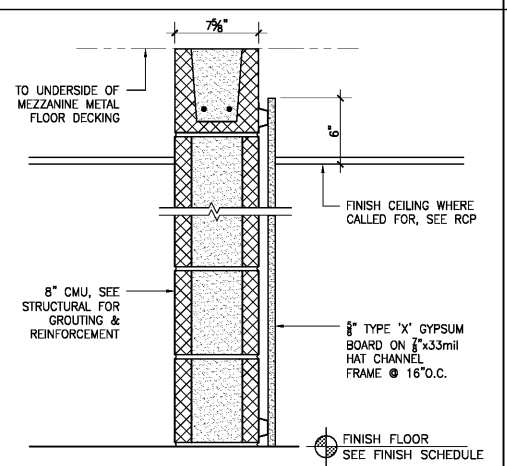
3 NON-RATED 3-5/8" METAL STUD WALL W/ CERAMIC TILE ON BOTH SIDES
SCALE: 1-1/2" = 1'-0"



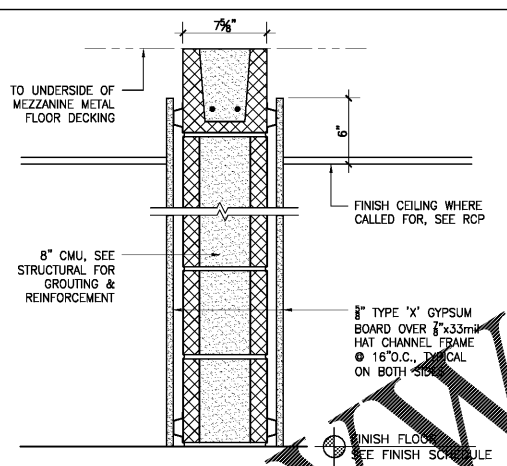
4 NON-RATED 3-5/8" METAL STUD WALL W/ CERAMIC TILE ON ONE SIDE
SCALE: 1-1/2" = 1'-0"



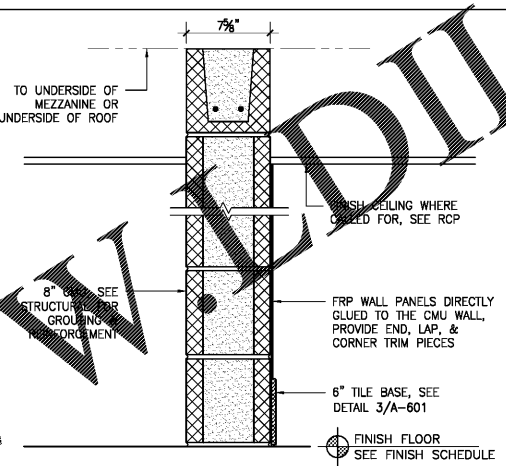
5 NON-RATED 8" CMU WALL
SCALE: 1-1/2" = 1'-0"



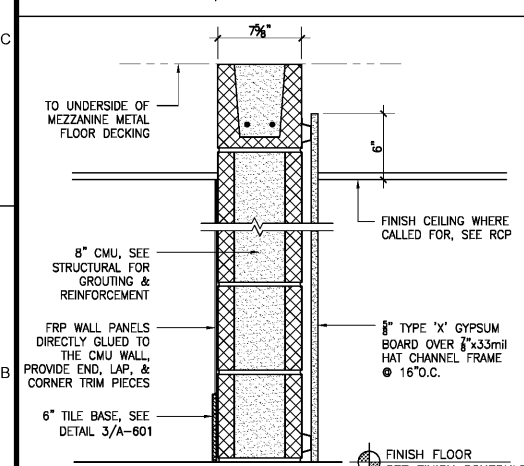
6 NON-RATED 8" CMU WALL WITH 7/8" HAT CHANNEL
SCALE: 1-1/2" = 1'-0"



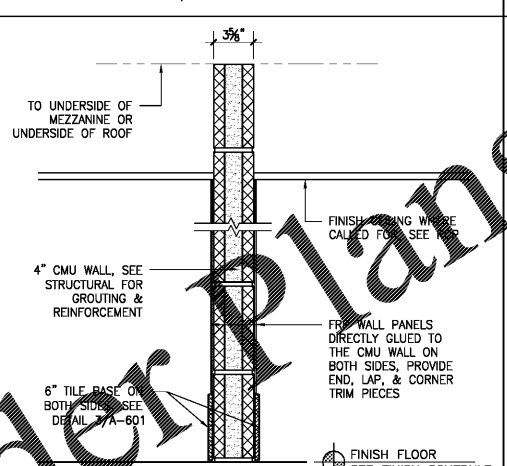
7 NON-RATED 8" CMU WALL WITH 7/8" HAT CHANNEL TWO SIDES
SCALE: 1-1/2" = 1'-0"



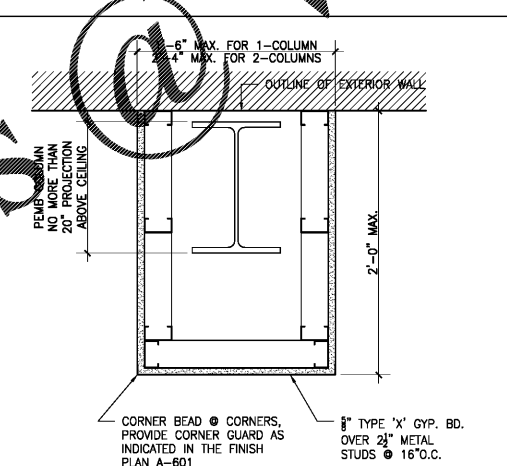
8 NON-RATED 8" CMU WALL WITH WALL W/ CERAMIC TILE ON ONE SIDE
SCALE: 1-1/2" = 1'-0"



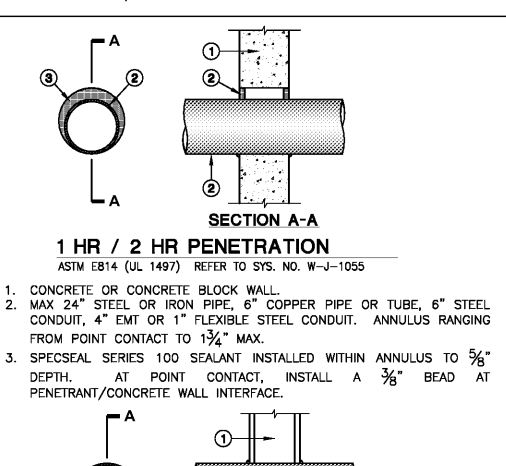
9 NON-RATED 8" CMU WALL WITH 7/8" HAT CHANNEL / CERAMIC TILE
SCALE: 1-1/2" = 1'-0" (LOCATION: UNISEX-111)



10 NON-RATED 4" CMU WALL
SCALE: 1-1/2" = 1'-0" (LOCATION: TOILET-111)



11 TYPICAL PLAN SECTION OF COLUMN WRAP DETAIL
SCALE: 1-1/2" = 1'-0"



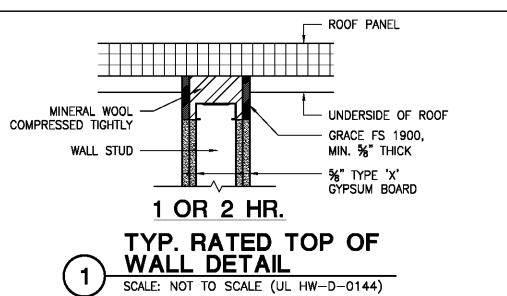
12 1 HR / 2 HR PENETRATION
SCALE: NOT TO SCALE

WALL TYPE NOTES:

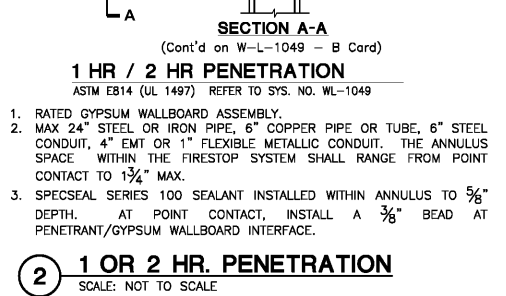
- ALL CORRIDORS, LOBBY & MEZZANINE TO RECEIVE 3/8" ABUSE RESISTANT TYPE "X" GYPSUM BOARD (SEE SPECIFICATIONS) - PROVIDE EXPANSION JOINTS AS RECOMMENDED BY MANUFACTURER AND AS NOTED FOR ALL WALL BOARD INSULATION. SEE DETAILS 3 & 4/A-002.
- INSTALL ALL GYPSUM BOARD VERTICALLY.
- ELEVATE GYPSUM 3/8" ABOVE FINISH FLOOR AT NON-RATED WALLS.
- FILL AND TAPE ALL JOINTS AND FIRESTOP AROUND ALL PIPE, CONDUIT, DUCTWORK & ANY OTHER PENETRATIONS THRU RATED WALLS.
- ALL GYPSUM BOARD AT WALLS AND CEILINGS SHALL BE OF 3/8" TYPE "X" GYPSUM BOARD.
- ALL TILE BACKER BOARDS SHALL BE OF 3/8" TYPE "X" DENS-SHIELD.
- FUR WALLS AROUND FIRE EXTINGUISHER CABINETS AS REQUIRED. SEE FLOOR PLAN FOR LOCATIONS. ALL FIRE RATINGS TO BE CONTINUOUS.
- COORDINATE ALL WALL BOARD INSTALLATION WITH THE FINISH SCHEDULE SHEET.

INSULATION NOTES:

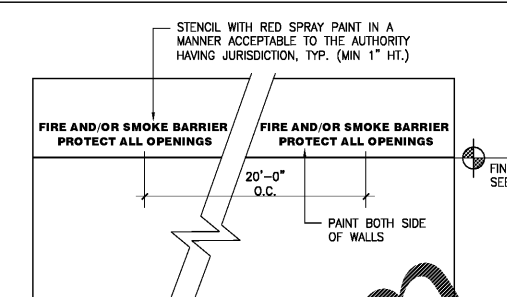
- EXTERIOR WALLS
 - INSULATION AT ALL EXTERIOR WALLS SHALL BE AS NOTED ON WALL SECTIONS & DETAILS (SHEETS A-302 TO A-305).
- INTERIOR WALLS
 - ALL INTERIOR 3/8" METAL STUD WALLS SHALL HAVE 3/2" THICK UNFACED FIBERGLASS BATT INSULATION.
 - 6" METAL STUD WALLS SHALL HAVE 5/2" THICK UNFACED FIBERGLASS BATT INSULATION.
 - WALLS OF VARYING THICKNESS SHALL HAVE UNFACED FIBERGLASS BATT INSULATION IN THE THICKNESS INDICATED FOR THE PARTICULAR WALL TYPE.
 - PROVIDE SOUND BATT AT ALL OTHER LOCATIONS INDICATED.



13 TYP. RATED TOP OF WALL DETAIL
SCALE: NOT TO SCALE (UL HW-D-0144)



14 1 OR 2 HR. PENETRATION
SCALE: NOT TO SCALE



15 FIRE AND/OR SMOKE BARRIER
SCALE: NOT TO SCALE

FIRESAFING, AND FIRE/SMOKE STOPPING

1. THE GENERAL CONTRACTOR SHALL BE RESPONSIBLE FOR PROVIDING AND PROPERLY INSTALLING ALL FIRESAFING, FIRE/SMOKE STOPPING AT PENETRATIONS OR OPENINGS BETWEEN FLOORS AT INTERSECTIONS OF RATED WALLS AND STRUCTURAL ELEMENTS, AT ALL PENETRATIONS OR OPENINGS THROUGH RATED WALLS AND AT ALL OTHER AREAS WHERE FIRE AND SMOKE MAY PENETRATE. COMPLY WITH UL NO. 1479 AND ASTM E814 FOR THE RATINGS REQUIRED BY THE DRAWINGS AND BY THE BUILDING CODE FOR FLOOR PENETRATIONS, WALL PENETRATIONS, AND PERIMETER WALL TO FLOOR PROTECTION OPENINGS.

FIRE RATING INFORMATION

- Floor and Ceiling Runners - (not shown) - Channel shaped runners, 3/8" wide (min.), 1 1/2" legs, formed from min No. 25 MSG (min No. 20 MSG when Item 4C is used) galvanized steel, attached to floor and ceiling with fasteners spaced 24 in. OC max.
 - Steel Studs - Channel shaped, 3/8" wide (min.), 1 1/2" legs, 8" folded back returns, formed from min No. 25 MSG (min No. 20 MSG when Item 4C is used) galv steel spaced 24 in. OC max.
 - Batts and Blankets* - (Optional) - Mineral wool or glass fiber batts partially or completely filling stud cavity. See Batts and Blankets (BZUZ) category for names of Classified companies.
 - Gypsum Board* 3/8" thick, 4ft wide, attached to steel studs and floor and ceiling track with 1" long, Type S steel screws spaced 8" O.C. along edges of board and 12" O.C. in the field of the board. Joints oriented vertically and staggered on opposite sides of the assembly. When attached to item 6 (furring channels), wallboard is screw attached to furring channels with 1" long, Type S steel screws spaced 12" O.C.
- AMERICAN GYPSUM CO - Type AG-C.
BEIJING NEW BUILDING MATERIALS CO LTD - Type DBX-1.
BPB AMERICA INC
BPB CELOTEX - Type 1.
CANADIAN GYPSUM COMPANY - Type AR, C, IP-AR, IP-X2, IPC-AR, SCX, SHX, WRC or WRX.
CONTINENTAL GYPSUM CORP. SUB OF GEORGIA-PACIFIC COPR - Type CG-C, CGS-5, CG6-6, CG9-9, CGTC-C.
JAMES HARDIE GYPSUM INC - Type Max "C" or Fire X.
LAFARGE CORP - Type LGFC2, LGFC2A, LGFC6, LGFC6A, LGFC-C, LGFC-C/A.
NATIONAL GYPSUM CO - Types FSK-C, FSK-G, FSW-C, FSW-G, FSW.
PABCO GYPSUM, DIV OF PACIFIC COAST BUILDING PRODUCTS INC - Type PG-C.
REPUBLIC GYPSUM CO - Type RG-C.
SIAM GYPSUM INDUSTRY CO LTD - Type EX-1.
STANDARD GYPSUM L.L.C. - Type SG-C.
TEMPLE-INLAND FOREST PRODUCTS CORP - Type TG-C.
UNITED STATES GYPSUM CO - Type AR, C, FRX-G, IP-AR, IP-X2, IPC-AR, SCX, SHX, WRC or WRX.
YESO PANAMERICANO S A DE C V - Type AR, C, IP-AR, IP-X2, IPC-AR, SCX, SHX, WRC or WRX.

- Gypsum Board* - (As an alternate to Item 4) - Nom 3/8 in. thick, 4ft wide, installed as described on Item 4 with screw length increased to 1 1/2".
CANADIAN GYPSUM COMPANY - Types AR, C, IP-AR.
UNITED STATES GYPSUM CO - Types AR, IP-AR.
- YESO PANAMERICANO S A DE C V - Types AR, IP-AR.
- Gypsum Board* - (As an alternate to Item 4, 4A, and 4B) - 3/8" thick gypsum panels, installed as described in Item 4 with Type S-12 steel screws. The length and spacing of the screws as specified under Item 4.
CANADIAN GYPSUM COMPANY - Type FRX.
UNITED STATES GYPSUM CO - Type FRX.
- Joint Tape and Compound - Vinyl, dry or premixed joint compound, applied in two coats to joints and screw heads; paper tape, 2 in wide, embedded in first layer of compound over all joints. As an alternate, nominal 3/8 in. thick gypsum veneer plaster may be applied to the entire surface of Classified veneer baseboard. Joints reinforced.
- Furring Channel - (Optional-Not Shown) - Resilient 25 MSG galvanized steel furring channels spaced vertically max 24" O.C., flange portion attached to each intersecting stud with 1/2" long type S-12 panhead steel screws. Not for use with Type FRX gypsum panels.

16 UL DETAIL - U465
SCALE: NOT TO SCALE

GENERAL NOTES:

ALL NOTES APPLY TO ALL DRAWINGS AND ALL TRADES. IT IS THE RESPONSIBILITY OF ALL CONTRACTORS AND TRADERS TO COORDINATE THE INSTALLATION OF THEIR WORK WITH THE INSTALLATION OF WORK BY ALL OTHER CONTRACTORS AND TRADERS. THE REQUIREMENTS OF THE DRAWINGS, GENERAL REQUIREMENTS AND ALL ITEMS OF THE CONTRACT DOCUMENTS ARE EQUALLY BINDING ON ALL CONTRACTORS AND TRADERS. EACH CONTRACTOR IS REQUIRED TO MAINTAIN FULL SETS OF THE CONTRACT DOCUMENTS FOR HIS EMPLOYEES USE ON THE PROJECT. IT IS THE RESPONSIBILITY OF ALL CONTRACTORS TO COORDINATE AND INSTALL WITH THE WORK OF OTHER CONTRACTORS AND TRADERS.

WHENEVER THERE ARE DISCREPANCIES BETWEEN DRAWINGS OR BETWEEN THE DRAWINGS AND SPECIFICATIONS OR CONFLICTS WITHIN THE SPECIFICATIONS AND/OR DRAWINGS, AND SUCH DISCREPANCY IS NOT CALLED TO THE ARCHITECT'S ATTENTION IN TIME TO PERMIT CLARIFICATION BY ADDENDUM, THE CONTRACTOR SHALL BE RESPONSIBLE FOR PROVIDING THE BETTER QUALITY OR GREATER WORK OR MATERIAL CALLED FOR. SHALL SUBMIT A WRITTEN STATEMENT WITH HIS PROPOSAL NOTING SUCH DISCREPANCIES AND SHALL SO FURNISH AND INSTALL SUCH BETTER QUALITY OR GREATER QUANTITY UNLESS OTHERWISE ORDERED IN WRITING.

JLA
Since 1980
Architects • Engineers • Landscape Architects
JOHNSON, LASCHNER & ASSOCIATES, P.C.
AUGUSTA, GA • MT. PLEASANT, SC
TEL (706) 724-5756 • TEL (843) 619-4656
FAX (706) 724-3955
WWW.THEJLAGROUP.COM

CITY OF NORTH AUGUSTA, SC
100 GEORGIA AVENUE, NORTH AUGUSTA, SC 29841
PROJECT NAME:
**NORTH AUGUSTA
FIRE STATION 1 RELOCATION**
PROJECT LOCATION:
311 W. MARTINTOWN ROAD, NORTH AUGUSTA, SC 29841

STEWART-COOPER-NEWELL ARCHITECTS, P.A.
CERT. NO. C-82008
GASTONIA, NC

KENNETH CHARLES
GASTONIA, NC
04/28/2020
REGISTERED ARCHITECT

REV	DATE	BY	ISSUED FOR	DESCRIPTION
0	10/08/20	KCN	ISSUED FOR BID	

PROJECT NO. 3057.2003 (1676)
DRAWN BY: GYS / GEC
CHECKED BY: KCN
DATE: 10/08/2020
SHEET TITLE:
WALL TYPES & LIFE SAFETY DETAILS & NOTES
SCALE: AS NOTED
DRAWING NO. **A-003** REV. 0

Stewart - Cooper - Newell
Architects
Tel. 704.865.6311
www.scn-architects.com

This document is the property of Johnson, Laschner & Associates, P.C. The unauthorized reproduction, copying or otherwise use of this document is strictly prohibited and any infringement thereupon may be subject to legal action.