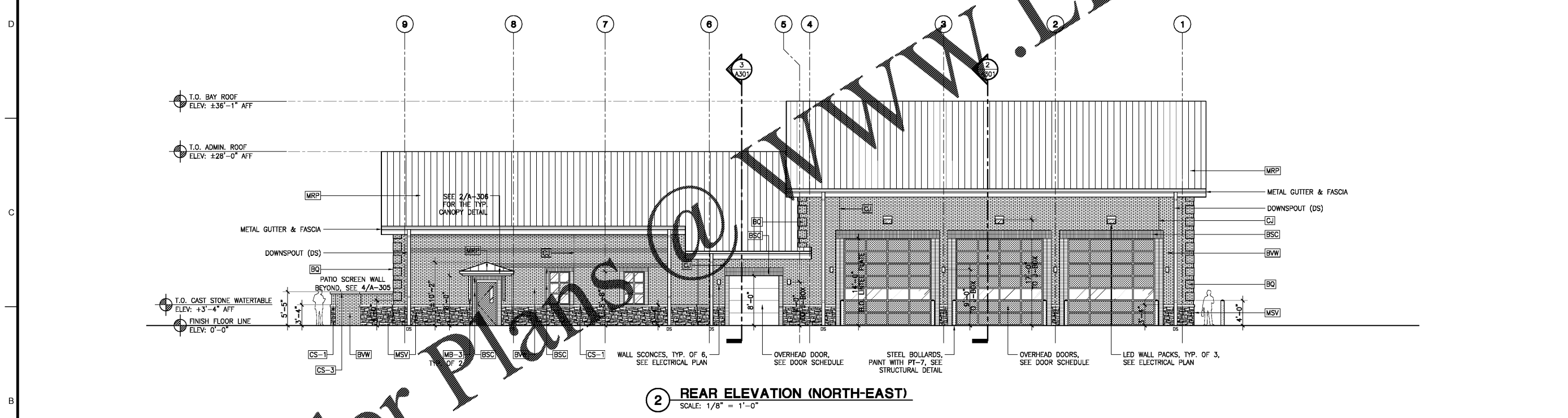


1 FRONT ELEVATION (SOUTH-WEST)
SCALE: 1/8" = 1'-0"



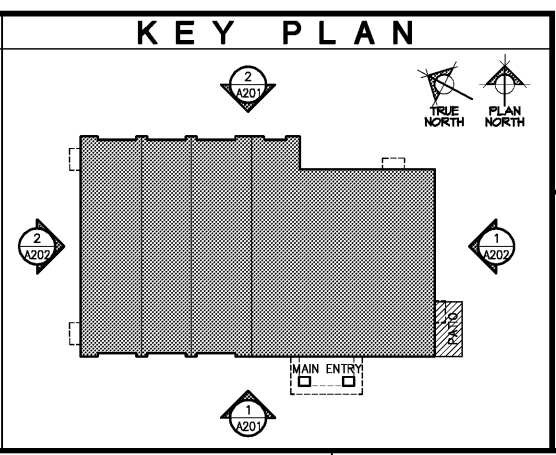
2 REAR ELEVATION (NORTH-EAST)
SCALE: 1/8" = 1'-0"

EXTERIOR FINISHES

- BRICK VENEER WALLS**
- BW** BRICK VENEER WALLS, (FIELD BRICK) TRIANGLE BRICK, NORTH HAMPTON, MODULAR-WIRECUT.
 - BSC** BRICK SOLDIER COURSE, TRIANGLE BRICK, NORTH HAMPTON, MODULAR-WIRECUT (1/2" PROTRUSION FROM BW).
 - BO** BRICK QUIN, 16"x16" (with 8" APART VERTICAL), TRIANGLE BRICK, NORTH HAMPTON, MODULAR-WIRECUT (1" PROTRUSION FROM THE BW).
- MANUFACTURED STONE VENEER**
- MSV** CENTURION STONE OF THE CAROLINAS & VIRGINIAS PENNSYLVANIA LEDGE (Model #: 150-800-25)
- PRE-CAST STONES:** SEE DETAILS IN A-501.
- CS-1** WATER TABLE CAST STONE
 - CS-2** APPARATUS WINDOW SILL CAST STONE
 - CS-3** PATIO SCREEN WALL CAST STONE
 - KS-1** KEY STONE, ABOVE CH DOOR
 - KS-2** KEY STONE, ABOVE WINDOW
- MORTAR - TYPE 'S'**
- FOR **BW** & **BSC**: STANDARD NATURAL GRAY MORTAR.
FOR **MSV**: STANDARD NATURAL GRAY MORTAR.
FOR ALL CAST STONES: MORTAR JOINT COLOR TO MATCH CAST STONE COLOR.
MORTAR JOINTS - CONCAVE ROUND TOOLED JOINTS.

- METAL ROOF PANEL (Standing Seam)**
- MRP** MBCI, BATTENLOK-HS METAL ROOF PANEL, 12" WIDE, 22ga., SMOOTH FINISH WITH STRIATIONS (COLOR: MEDIUM BRONZE, SIGNATURE 300).
NOTE: SEE ROOF PLAN A-103 FOR THE ALTERNATE ROOFING MATERIAL.
- METAL SOFFIT PANEL**
- MSP** MBCI, ARTISAN SERIES L-8 (8" WIDE) METAL SOFFIT PANELS WITH CONCEALED FASTENERS, 24ga., SMOOTH FINISH (COLOR: TO MATCH MRP, SIGNATURE 300), PROVIDE PERFORATED VENTED SOFFIT @ EVERY 6TH LAYER OF PANELS.
- METAL FASCIA & ROOF FLASHING**
- COLOR AND THICKNESS TO MATCH MRP (METAL ROOF PANEL)
- METAL GUTTERS & DOWNSPOUTS**
- COLOR & THICKNESS TO MATCH MRP METAL PANEL ROOF (DOWNSPOUT SIZES: 3"x6"x22ga & 3"x3" IN THE 4-SMALL CANOPIES AROUND THE BUILDING, SEE ROOF PLAN A-103).
- METAL BRACKETS (MB)**
- MB-1** METAL BRACKET, MAIN ENTRANCE, FRONT
 - MB-2** METAL BRACKET, MAIN ENTRANCE, SIDES
 - MB-3** METAL BRACKET, IN ALL CANOPIES
- SEE DETAILS IN A-501.
- METAL BRACKETS (MB)**
- MB-1** METAL BRACKET, MAIN ENTRANCE, FRONT
 - MB-2** METAL BRACKET, MAIN ENTRANCE, SIDES
 - MB-3** METAL BRACKET, IN ALL CANOPIES
- SEE DETAILS IN A-501.
- METAL BRACKETS (MB)**
- MB-1** METAL BRACKET, MAIN ENTRANCE, FRONT
 - MB-2** METAL BRACKET, MAIN ENTRANCE, SIDES
 - MB-3** METAL BRACKET, IN ALL CANOPIES
- SEE DETAILS IN A-501.

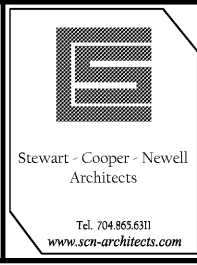
- CJ** CONTROL JOINT, CAULK COLOR TO MATCH ADJACENT MATERIAL, SEE DETAIL.
- STOREFRONT (Doors & Windows)**
- ALUMINUM STOREFRONT, KAWNEER (COLOR: #28 MEDIUM BRONZE, ANODIZED)
- LOUVERS (FOR BAY EXHAUST and INTAKE)**
- AIRROLITE K638 EXTRUDED ALUMINUM LOUVERS WITH INSECT SCREEN (COLOR: MEDIUM BRONZE SRI-10, AL237)
- OVERHEAD DOORS (Std. Roof Pitch)**
- CLOPAY OVERHEAD DOORS OR APPROVED EQUAL (ALUMINUM INSULATED GLASS and POWDER COATED INSULATED FLAT STEEL PANELS) SEE DOOR SCHEDULE @ A-603 FOR MORE INFO.
- NOTE:**
- PAINT ALL EXPOSED STEEL LINTELS TO MATCH HOLLOW METAL DOORS & FRAME FINISH.
- HOLLOW METAL DOORS & FRAMES**
- SEMI-GLOSS EPOXY PAINT:
SHERWIN WILLIAMS, SW-7020 (BLACK FOX), EXTERIOR SIDE ONLY. SEE A-601 FOR INTERIOR.



GENERAL NOTES:

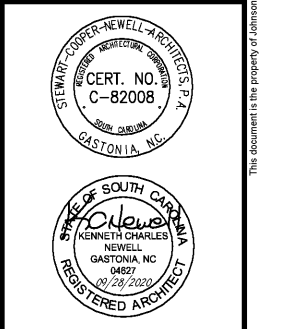
ALL NOTES APPLY TO ALL DRAWINGS AND ALL TRADES. IT IS THE RESPONSIBILITY OF ALL CONTRACTORS AND TRADES TO COORDINATE THE INSTALLATION OF THEIR WORK WITH THE INSTALLATION OF WORK BY ALL OTHER CONTRACTORS AND TRADES. THE REQUIREMENTS OF THE DRAWINGS, GENERAL REQUIREMENTS AND ALL ITEMS OF THE CONTRACT DOCUMENTS ARE EQUALLY BINDING ON ALL CONTRACTORS AND TRADES. EACH CONTRACTOR IS REQUIRED TO MAINTAIN FULL SETS OF THE CONTRACT DOCUMENTS FOR HIS EMPLOYEES USE ON THE PROJECT TO ASSURE THAT ALL WORK IS PROPERLY COORDINATED AND INSTALLED WITH THE WORK OF OTHER CONTRACTORS AND TRADES.

WHENEVER THERE ARE DISCREPANCIES BETWEEN DRAWINGS OR BETWEEN THE DRAWINGS AND SPECIFICATIONS, OR CONFLICTS WITHIN THE SPECIFICATIONS AND/OR DRAWINGS, AND SUCH DISCREPANCY IS NOT CALLED TO THE ARCHITECT'S ATTENTION IN TIME TO PERMIT CLARIFICATION BY ADDITIONAL THE CONTRACTOR SHALL BE RESPONSIBLE FOR PROVIDING THE BETTER QUALITY OR GREATER WORK OR MATERIAL CALLED FOR. SHALL SUBMIT A WRITTEN STATEMENT WITH HIS PROPOSAL NOTING SUCH DISCREPANCIES, AND SHALL SO FURNISH AND INSTALL SUCH BETTER QUALITY OR GREATER QUALITY UNLESS OTHERWISE ORDERED IN WRITING.



JLA
Since 1980
Architects • Engineers • Landscape Architects
JOHNSON, LASCHOB & ASSOCIATES, P.C.
AUGUSTA, GA • MT. PLEASANT, SC
TEL (706) 724-5756 • TEL (843) 619-4656
FAX (706) 724-3955
WWW.THEJLAGROUP.COM

CLIENT: CITY OF NORTH AUGUSTA, SC
100 GEORGIA AVENUE, NORTH AUGUSTA, SC 29841
PROJECT NAME: NORTH AUGUSTA FIRE STATION 1 RELOCATION
PROJECT LOCATION: 311 W. MARTINTOWN ROAD, NORTH AUGUSTA, SC 29841



REV.	DATE	BY	DESCRIPTION
0	10/08/20	KCN	ISSUED FOR BID

PROJECT NO. 3057.2003 (1576)
DRAWN BY: GYS / GEC
CHECKED BY: KCN
DATE: 10/08/2020
SHEET TITLE:
**FRONT ELEVATION
REAR ELEVATION
EXTERIOR FINISHES
and KEY PLAN**
SCALE: AS NOTED
DRAWING NO. **A-201**
REV. **0**

This document is the property of Johnson, Laschober & Associates, P.C. The unauthorized reproduction, copying or otherwise use of this document is strictly prohibited and any infringement thereupon may be subject to legal action.