

PLUMBING FIXTURE SCHEDULE

MARK	FIXTURE	NOM. PIPE SIZE				DESCRIPTION
		CW	HW	W	V	
P-1	WALL-HUNG LAVATORY (H.C.)	1/2"	1/2"	2"	1 1/2"	AMERICAN STANDARD 0355 012 ACCESSIBLE LAVATORY, AMERICAN STANDARD 7385 050 FAUCET, GRID DRAIN, ANGLE STOPS, & 3/8" SUPPLIES, PLUMBEREX HANDY-SHIELD MODEL 2003
P-2	COUNTERTOP LAVATORY (H.C.)	1/2"	1/2"	2"	1 1/2"	AMERICAN STANDARD 0476 028 ACCESSIBLE LAVATORY, AMERICAN STANDARD 7385 050 FAUCET, GRID DRAIN, ANGLE STOPS, & 3/8" SUPPLIES, PLUMBEREX HANDY-SHIELD MODEL 2003
P-3	WATER CLOSET (H.C.)	1/2"	-	4"	2"	AMERICAN STANDARD CADET PRO 215AB 104, 1.28 GAL. FLUSH w/ CHURCH 295CT TOILET SEAT. MOUNT FLUSH OPERATOR ON WIDE SIDE OF TOILET.
P-4	SAFETY SHOWER w/ EYE WASH	1 1/4"	1 1/4"	-	-	HAWS MODEL 8320-8325 COMBINATION SHOWER & EYE/FACE WASH w/ HAWS MODEL 9202E THERMOSTATIC MIXING VALVE
P-5	SHOWER (H.C.)	1/2"	1/2"	2"	2"	SYMMONS TEMPTRON S-86-1-L-X SHOWER VALVE SYSTEM w/ SYMMONS T-600B-36-V HAND SHOWER
P-6	DOUBLE BOWL SINK	1/2"	1/2"	2"	2"	JUST DLX-1933-A-GR SINK 19"x33"x10.5" (4 HOLE), #J-35 STRAINERS, AMERICAN STANDARD 4175 501 F15 FAUCET, SUPPLIES, STOP VALVES, AND TRAP
P-7	HI/LO WATER COOLER	1/2"	-	2"	1 1/2"	MURDOCK MODEL A172108F-UG
P-8	SINGLE BOWL SINK (H.C.)	1/2"	1/2"	2"	1 1/2"	JUST S-ADA-1313-A-GR SINK 13"x13"x5.5", #J-35 STRAINER, AMERICAN STANDARD 4175 100 F15 FAUCET, SUPPLIES, STOP VALVES, AND TRAP
P-9	MOP BASIN	1/2"	1/2"	3"	2"	FIAT MODEL MSB-2424, FAUCET 830-AA, HOSE & HOSE BRACKET 832-AA, MOP HANGER 889-CC AND STRAINER
P-10	DOUBLE LAUNDRY SINK	1/2"	1/2"	2"	2"	ADVANCE TABCO FC-2-1818-24RL FREE STANDING SINK w/ K-105RE SWING SPOUT FAUCET
IB-1	ICE MAKER VALVE	1/2"	-	-	-	IPS WATER TITE MODEL AB9700
WB-1	WASHER BOX	1/2"	1/2"	2"	1 1/2"	IPS WATER TITE MODEL W4700 OUTLET BOX w/ WASH LINT LUX-R (WALL MOUNTED) IN-WINE LINT FILTER, ENVIRONMENTAL ENHANCEMENTS
3/4"-WH	WALL HYDRANT	3/4"	-	-	-	J.R. SMITH MODEL 5500 NOT FOR 1/2" WALL THICKNESS WARNING - FAUCET MUST BE INSTALLED w/ DOWNWARD PITCH TOWARD NOZZLE. NOZZLE MUST BE REMOVED & FREEZING. OTHER ORANGE FAUCET FREEZE SURST.
1/2"-HB	HOSE BIBB	1/2"	-	-	-	WOODFORD MODEL 235P 1/2 w/ 1/2" HOSE
WDB	WALL DRAIN BOX	-	-	2"	2"	ACORN MODEL 8200-1
SD	SHOWER DRAIN (TILE)	-	-	2"	2"	PLUMBING FIXTURES INC. MODEL PBR-410
PMP-1	RECIRCULATION PUMP	3/4"	-	-	-	ELL & GOSSETT MODEL NBF-22 w/ TIMECLOCK TV110/60Hz (7 GPM @ 10 FOOT HEAD)
GWH-1	GAS WATER HEATER	1 1/4"	1 1/4"	1 1/4"	1 1/4"	A.O. SMITH MODEL BTX-100, 50 GALLON CAP, 100,000 BTU/HR INPUT, NATURAL GAS, 120/1/60, RECOVERY RATE OF 115 GPH AT A 100° F TEMP. RISE (PROVIDE TACO LEAKBREAKER WATER HEATER SHUT-OFF)

NOTES:
 1. ALL FIXTURES, FITTINGS, AND PIPING TO COMPLY WITH THE LATEST REVISION OF THE AMERICAN DISABILITIES ACT, WHERE APPLICABLE.
 2. HEIGHT SHALL COMPLY w/ ADA REQUIREMENTS AND STANDARD MANUFACTURER RECOMMENDED INSTALLATION HEIGHTS FOR NON-ADA FIXTURES.
 PLUMBING CONTRACTOR TO COORDINATE w/ COUNTER TOP CONTRACTOR BEFORE ORDERING SINKS.

WATER HAMMER ARRESTER SCHEDULE

SYMBOL	FIXTURE UNIT RATING
PDI "A"	1-11
PDI "B"	12-32
PDI "C"	33-60
PDI "D"	61-113
PDI "E"	114-154
PDI "F"	155-330

NOTE:
 USE METAL-BELLOWS TYPE WITH PRESSURIZED METAL CUSHIONING CHAMBER, COMPLYING WITH STANDARD P.D.I. WH-201.

HANGERS & SUPPORTS

SPACING TO NOT EXCEED THE FOLLOWING SPACING, ON CENTERS

PIPE SIZE	SCH. 40 PVC	COPPER	STEEL	HANGER ROD DIA.
1/2"	4 FT.	5 FT.	7 FT.	1/4"
3/4"	4 FT.	6 FT.	7 FT.	1/4"
1"	4 FT.	6 FT.	7 FT.	1/4"
1 1/2"	4 FT.	8 FT.	10 FT.	3/8"
2"	4 FT.	9 FT.	11 FT.	3/8"
2 1/2"	4 FT.	10 FT.	12 FT.	3/8"
3"	4 FT.	10 FT.	12 FT.	3/8"
4"	4 FT.	10 FT.	12 FT.	1/2"

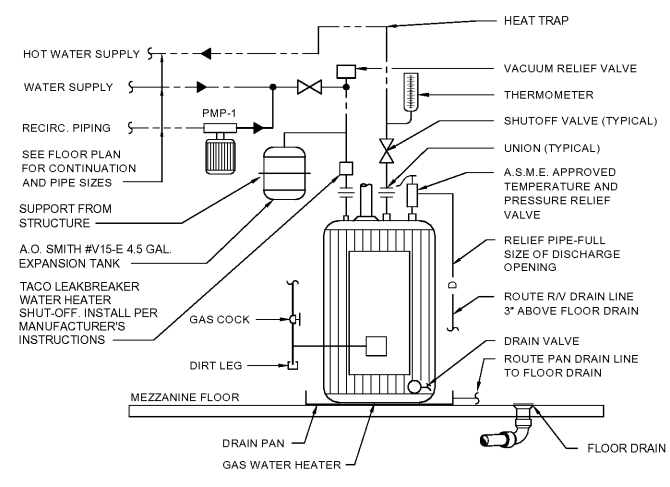
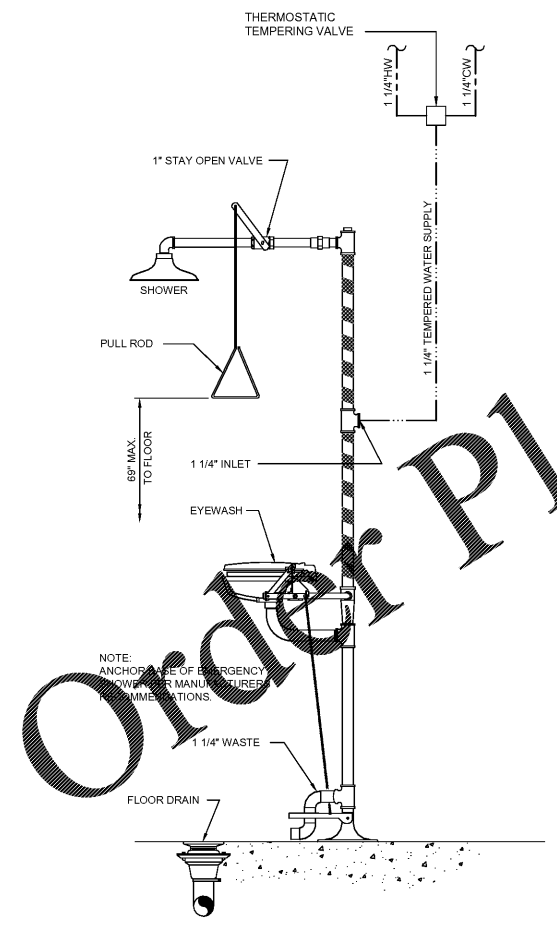
FLOOR DRAIN & CLEANOUT SCHEDULE

SYMBOL	J.R. SMITH SERIES NO.	PROVIDE	NOTES
FD-1	2473	②	APPARATUS BAYS
FD-2	2010-B	① ②	
GCO	4237		
FCO	4040		
WCO	4452-U		

FLOOR DRAIN & CLEANOUT ACCESSORIES

①	PROVIDE MANUFAC. RECOMMENDED STRAINER SIZE BASED ON OUTLET SIZE	②	PROSET TRAP GUARD INSERT
---	---	---	--------------------------

NOTES:
 1. PROVIDE PROSET "T-RITE" DRAINS ON ALL FLOOR/SHOWER/HUB DRAINS THAT ARE THROUGH PENETRATION OF A FIRE RATED FLOOR.
 2. COORDINATE FLOOR FINISHES w/ FLOOR DRAINS AND FLOOR CLEANOUTS. (ADJUST FLOOR DRAIN AND FLOOR CLEANOUT ELEVATIONS AS REQUIRED)



Since 1980
 Architects • Engineers • Landscape Architects
JOHNSON, LASCHOBER & ASSOCIATES, P.C.
 AUGUSTA, GA • MT. PLEASANT, SC
 TEL (706) 724-5756 • TEL (843) 619-4656
 FAX (706) 724-3935
 WWW.THEJLAGROUP.COM

CLIENT: CITY OF NORTH AUGUSTA, SC
 100 GEORGIA AVENUE, NORTH AUGUSTA, SC 29841
 PROJECT NAME: NORTH AUGUSTA FIRE STATION 1 RELOCATION
 PROJECT LOCATION: 311 W. MARTINTOWN ROAD, NORTH AUGUSTA, SC 29841

REV	DATE	BY	DESCRIPTION
0	10/08/20	CVW	ISSUED FOR BID

PROJECT NO. 3057.2003
 DRAWN BY: WBR
 CHECKED BY: CVW
 DATE: 10/08/2020

SHEET TITLE:
PLUMBING SCHEDULES AND DETAILS

SCALE: AS NOTED

DRAWING NO. **P-301** REV. **0**

Stewart - Cooper - Nowell
 Architects
 704.865.6311
 www.scn-architects.com