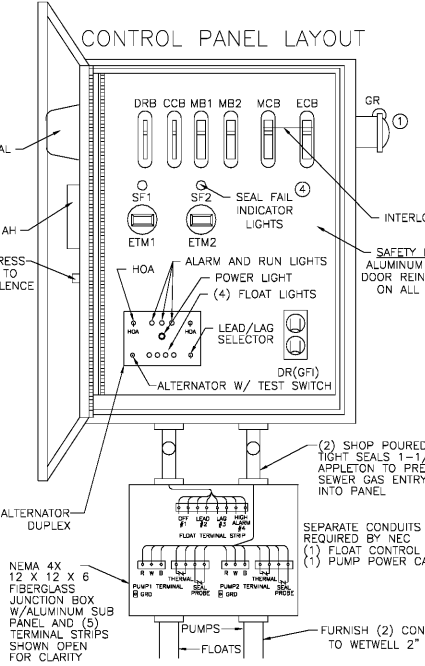
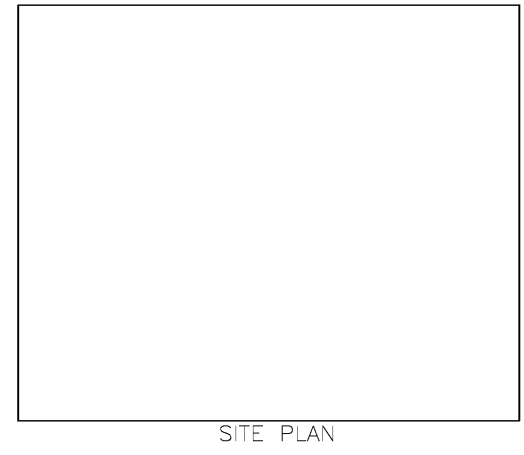
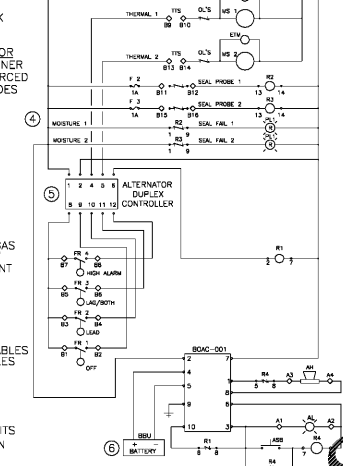
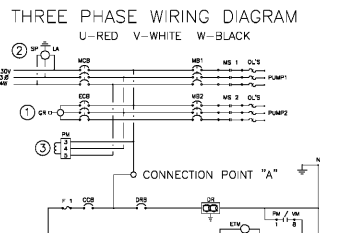
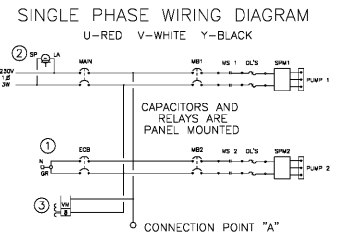


CONTROL PANEL - SHALL CONFORM TO FL DEP 64-604.42(A)
CONTROL PANEL SHALL BE TSC MODEL # 38-D OR APPROVED EQUIVALENT IN NEMA 4X FIBERGLASS ENCLOSURE. THE PANEL SHALL MEET STATE OF FLORIDA DEPARTMENT OF ENVIRONMENTAL PROTECTION (DEP), ENVIRONMENTAL PROTECTION COMMISSION (EPC) AND LOCAL CODE REQUIREMENTS GOVERNING PRIVATE LIFT STATIONS.
FLOAT SWITCHES AND CONTROL SYSTEM SHALL BE UL LISTED AND INTRINSICALLY SAFE. ALL COMPONENTS SHALL BE UL LISTED.
A JUNCTION BOX IS REQUIRED, WITH SHOP POURED SEALS BETWEEN BOX AND CONTROL PANEL TO PREVENT SEWER GAS ENTRY INTO CONTROL PANEL.
ELECTRICAL CONTRACTOR TO PROVIDE SERVICE DISCONNECT WITH LIGHTNING ARRESTOR MOUNTED PER LOCAL CODES.
THE CONTROL PANEL SHALL BE SUITABLY INSTALLED TO PREVENT SETTLING OR TIPPING.
BATTERY BACK-UP ALARM SYSTEM TO BE INCORPORATED INTO CONTROL PANEL PER THE "10 STATES STANDARDS"



- LEGEND**
- AH ALARM HORN
 - AL ALARM LIGHT
 - ASB ALARM SILENCE BUTTON
 - ATS ALTERNATOR W/TEST SWITCH
 - BUB BATTERY (BACK-UP UNIT)
 - CCB CONTROL CIRCUIT BREAKER
 - DR DUPLEX RECEPTACLE
 - DRB DUPLEX RECEPTACLE BREAKER
 - ECB EMERGENCY CIRCUIT BREAKER
 - ETM ELAPSED TIME METER
 - F FUSE
 - FL FLASHER
 - FS FLOAT SWITCH (REGULATOR)
 - GR GENERATOR RECEPTACLE
 - GRD GROUND
 - HOA HAND-OFF-AUTOMATIC SELECTOR
 - LA LIGHTNING ARRESTOR
 - MB MOTOR BREAKER
 - MCB MAIN CIRCUIT BREAKER
 - MS MOTOR STARTER
 - N NEUTRAL
 - OLTS OVERLOAD HEATERS
 - PM PHASE MONITOR
 - PTS PUMP TERMINAL STRIP
 - REL RELAY
 - RC RUN CAPACITOR
 - RES RESISTOR
 - RTS RELAY TERMINAL STRIP
 - SC START CAPACITOR
 - SE SEAL (1/4")
 - SR START RELAY
 - SP SURGE PROTECTOR
 - TTS THERMAL TERMINAL STRIP



GENERAL NOTES

FURNISH AND INSTALL EBARA SUBMERSIBLE GRINDER PUMPS OR APPROVED EQUIVALENT.

DESIGN CONDITION:

MODEL _____ HP
GPM _____ FT/TDH
VOLTAGE _____ PHASE
DISCHARGE _____ MILLER

SEWAGE GRINDER PUMP: 1. RATED FOR TWENTY (20) STARTS PER HOUR.
2. AIR FILLED MOTOR DESIGNED FOR SEWAGE APPLICATION WITH MASS FINE PARTICLES.
3. DUAL MECHANICAL SHAFT SEALS (SILICON CARBIDE/SILICON CARBIDE) LOCATED OUT OF THE PUMPAGE, IN A SEPARATE OIL FILLED CHAMBER.
4. HIGH TEMPERATURE BALL BEARINGS - 100,000 HOURS, UPPER BEARING - SINGLE ROW AND LOWER BEARINGS - DOUBLE ROW TYPE.
5. PUMP SHAFT HORSEPOWER (HP) SHALL NOT EXCEED MOTOR RATED HORSEPOWER THROUGHOUT THE ENTIRE OPERATING RANGE OF THE PUMP PERFORMANCE CURVE.

6. SINGLE PHASE MOTORS SHALL BE DUAL WOUND CAPACITOR START-RUN AND CAPABLE OF OPERATING ON 208/230 VOLT WITH A 10% TOLERANCE VOLTAGE (190 TO 260). THREE PHASE MOTORS SHALL BE DUAL WOUND AND CAPABLE OF OPERATING ON 208/230 VOLT WITH A 10% TOLERANCE VOLTAGE (190 TO 280) OR OPERATING ON 480 VOLT. CHANGING THE MOTOR LEADS INSIDE THE PUMP.

FIBERGLASS WET WELL SHALL BE ONE PIECE UNIT WITH INTEGRAL BOTTOM, WALL AND UPPER FLANGE. THE ENTIRE FIBERGLASS WET WELL SHALL HAVE A DYNAMIC LOAD RATING OF 100 LBS/FT². EACH UNIT MUST BE SERIAL NUMBERED TO IDENTIFY THE TEST PROCEDURE. ASTM D 3753 & H-20 SPECIFICATIONS SHALL BE REQUIRED AS MINIMUM.

ALUMINUM HATCH: TSC MODEL-54R OR APPROVED EQUIVALENT (54") ROUND WITH 24" X 36" LOCKABLE HATCH, REINFORCED FOR LOAD RATING OF 300 LBS/FT² WITH HOLD OPEN SAFETY ARM, LOCKING DEVICE FOR HATCH TYPE PADLOCK AND STAINLESS STEEL HARDWARE.

VALVE BOX: FIBERGLASS COMPOSITE (H-10 TRAFFIC RATED) WITH INTEGRAL BOTTOM. (FOR 1/4" AND 2" DISCHARGE PIPING SXS HEADER SYSTEM) SHALL BE 26" X 38" X 18" WITH 17" X 30" LIMITED ACCESS LID.

NECESSARIES: #304 S/S - GUIDE RAILS, UPPER GUIDE RAIL BRACKETS, CABLE HOLDER, ANCHOR BOLTS AND PUMP LIFTING CHAINS.

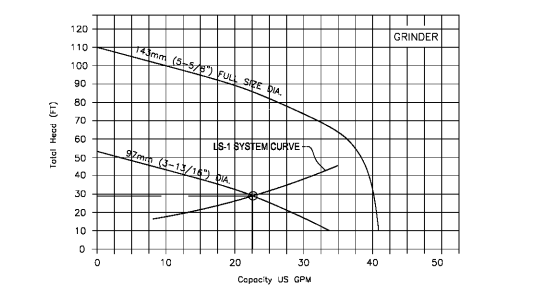
VALVES: SHALL BE SEWAGE SERVICE DESIGN BRASS SWING CHECK VALVES WITH TOP ENTRY CLEAN-OUT PORT AND BRASS WEDGE GATE VALVES OPEN 100%.

PIPING: 2" SCHEDULE 80 PVC.

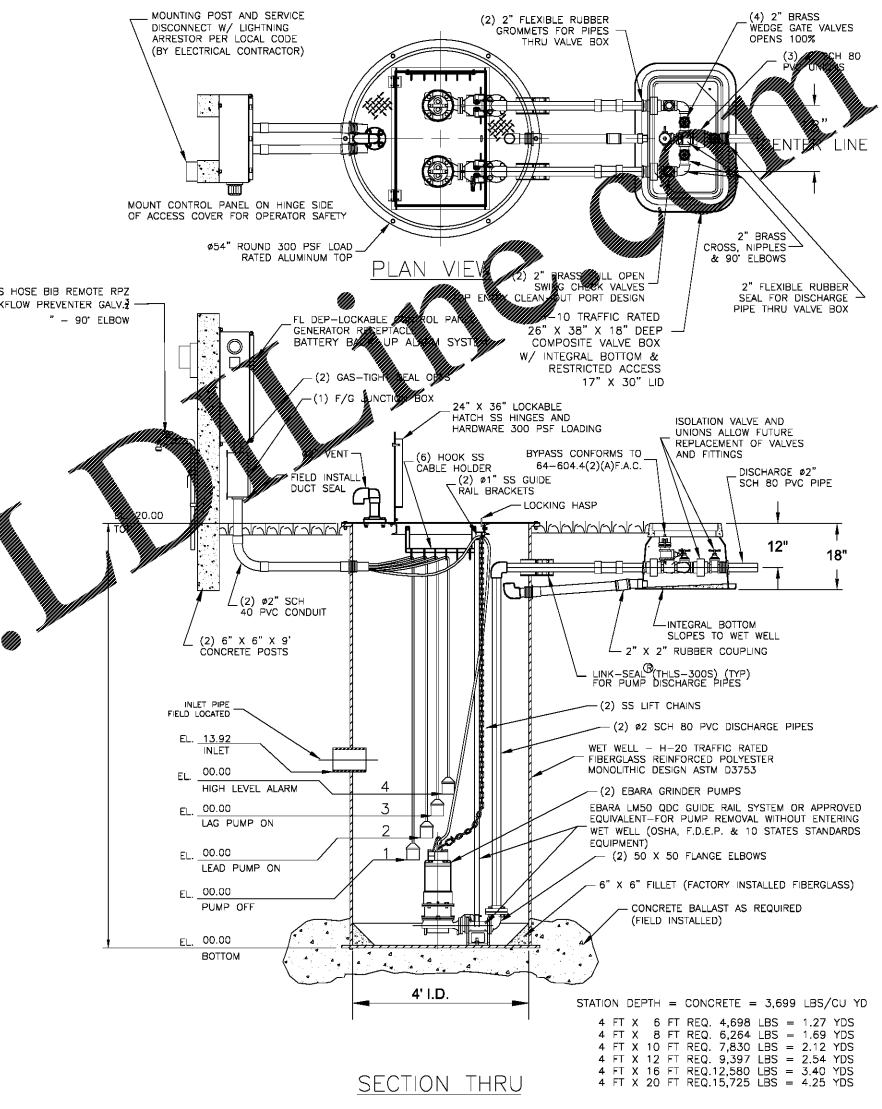
FLOAT SWITCHES: UL LISTED SJ ELECTRO MODEL (SJ 30 SWENO) OR APPROVED EQUIVALENT.

PUMP SUPPLIER SHALL PROVIDE SUBMERSIBLE PUMPS, SLIDE RAIL ASSEMBLIES, CONTROL PANEL, JUNCTION BOX, FLOAT SWITCHES, ALUMINUM HATCH AND ACCESSORIES TO INSURE PROPER OPERATION AND WARRANTY.

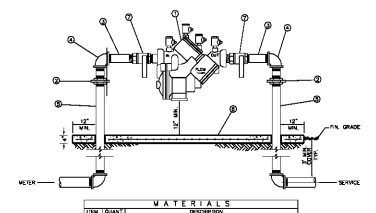
THE COMPLETE PACKAGE PUMPING STATION SHALL HAVE PUMP BASES, SLIDE RAIL ASSEMBLIES AND DISCHARGE PIPING.



PUMP PERFORMANCE CURVE



SECTION THRU



REDUCED PRESSURE BACKFLOW PREVENTER (SINGLE SERVICE: 3/4")

NOTE: - FIELD ADJUST AND CUT ITEM 8 TO THE PROPER LENGTH FOR TESTING.
- MINIMUM CLEARANCE OF 24" TO BE MAINTAINED AROUND DEVICE.
- DEVICE MUST BE INSTALLED SAFELY.
- COMPONENTS SHALL BE LISTED IN THE DEVICE.
- DEVICE MUST BE LISTED WITH THE UNIVERSITY OF CALIFORNIA REGULATION FOR CROSS CONNECTION CONTROL AND HYDRAULIC RESEARCH.

Order Plans