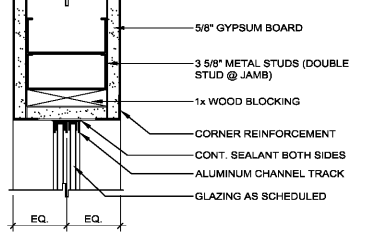
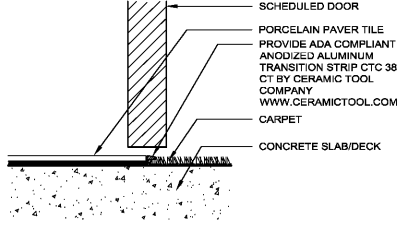


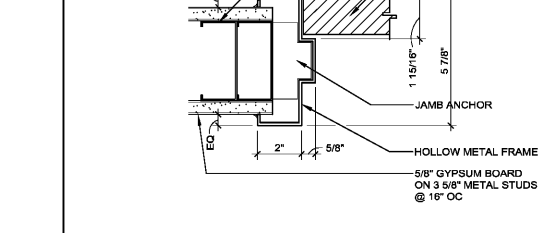
NOTE:
 PROVIDE KNAPE & VOGT P1092 ANODIZED ALUMINUM CHANNEL AND ROLLER ASSEMBLY (W/ 1093 JAMBS & UPPER CHANNEL, 1097 NYLON ROLLERS, 1095 VINYL GUIDES, 1096 SHOES, & 1099 LOWER TRACK) AND 1087 RUBBER BUMPERS BOTH SIDES. PROVIDE CLEAR PLASTIC FINGER PULLS ON EACH LEAF.



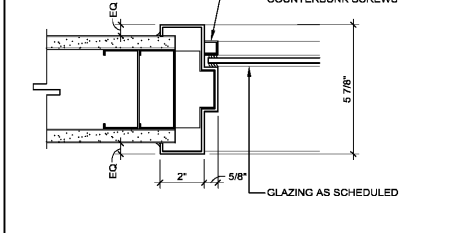
SLIDING WINDOW JAMB / HEAD DETAIL L14
3'-1"



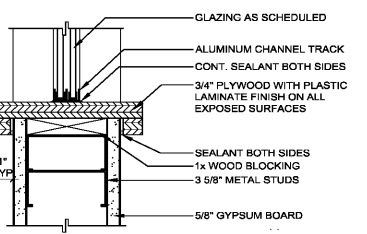
CARPET / TILE TRANSITION DETAIL @ DOOR L11
3'-1"



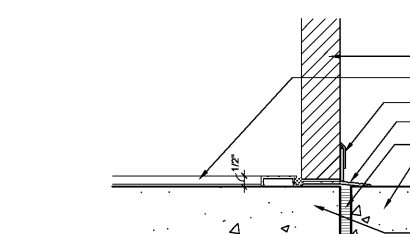
JAMB / HEAD DETAIL L8
3'-1"



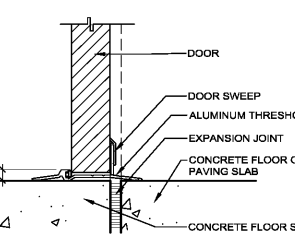
JAMB DETAIL (HEAD & SILL SIM) L5
3'-1"



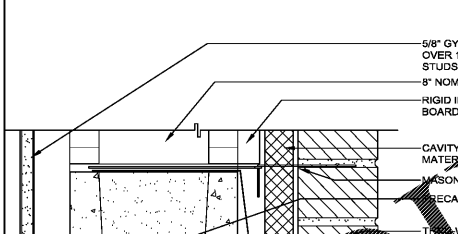
SLIDING WINDOW SILL DETAIL J14
3'-1"



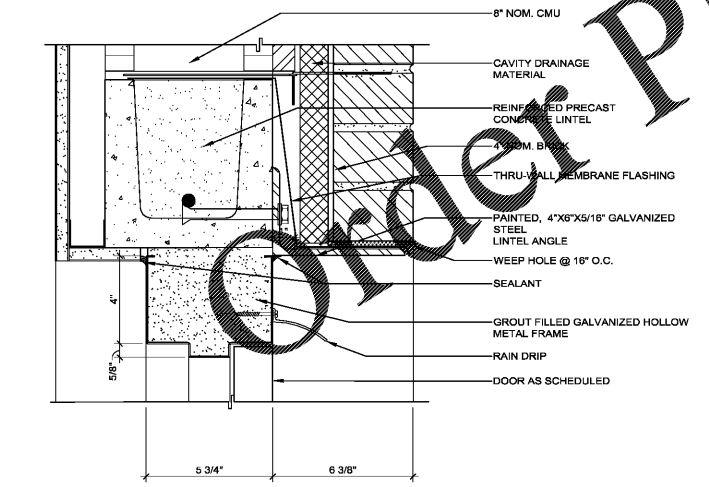
THRESHOLD DETAIL J10
3'-1"



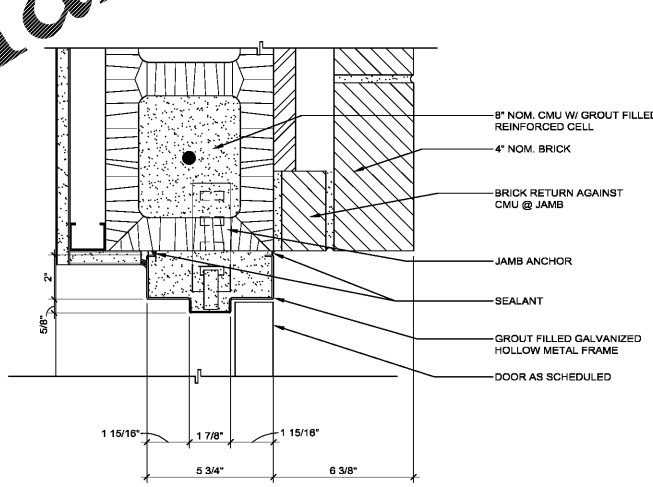
THRESHOLD DETAIL J8
3'-1"



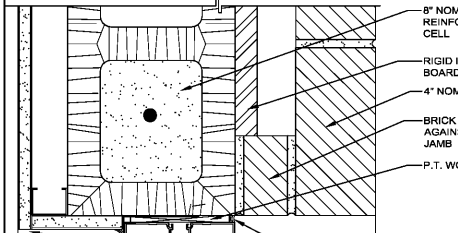
EXTERIOR STOREFRONT HEAD G5
3'-1"



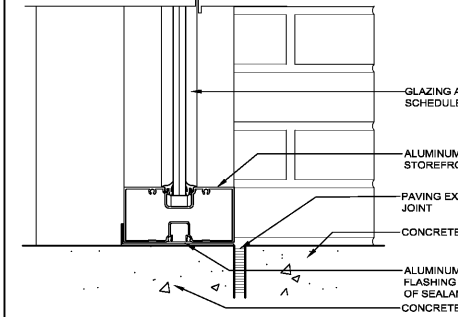
EXTERIOR HEAD DETAIL A12
3'-1"



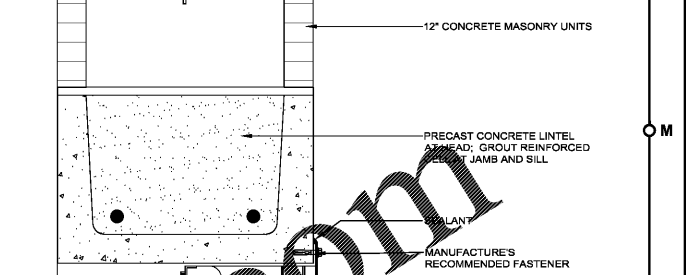
EXTERIOR JAMB DETAIL A8
3'-1"



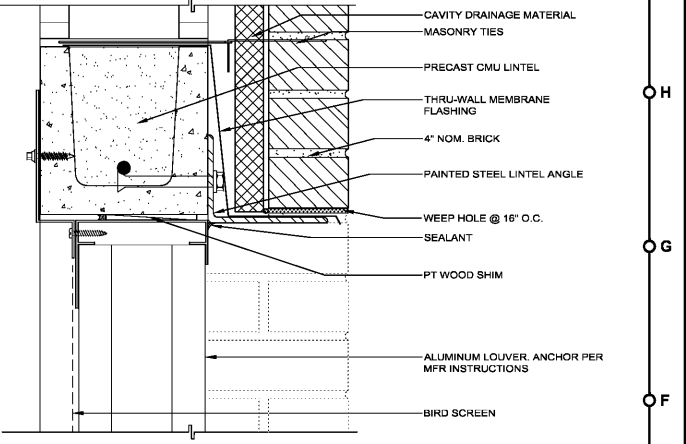
EXTERIOR STOREFRONT JAMB D5
3'-1"



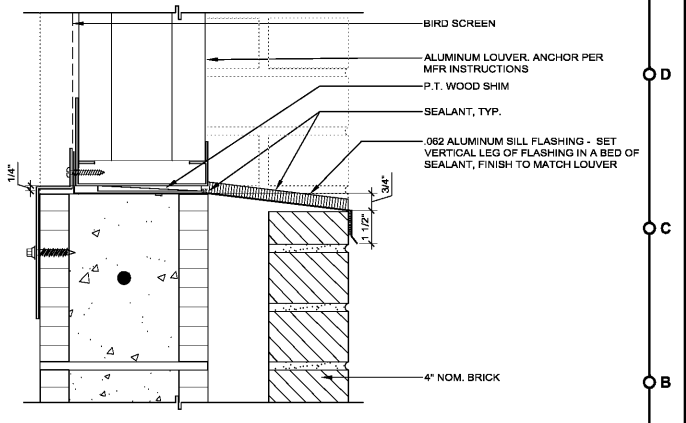
SILL DETAIL A5
3'-1"



EXTERIOR ALUMINUM LOUVER HEAD (JAMB SIM) J1
3'-1"



EXTERIOR ALUMINUM LOUVER HEAD (JAMB SIM) E1
3'-1"



EXTERIOR ALUMINUM LOUVER SILL A1
3'-1"

FleischmanGarcia
 ARCHITECTURE • INTERIORS • EXTERIORS • ENTERTAINMENT DESIGN
 3410 WEST PARK AVENUE, SUITE 100
 TAMPA, FLORIDA 33609
 PHONE (813) 241-4000
 FAX (813) 241-4000
 REGISTRATION NUMBER: AA 0000123

Pasco County Fire & Rescue Station No. 17
 New Port Richey, Florida

THIS PERSON AND DRAWING ARE THE SOLE PROPERTY OF FLEISCHMANGARCIA ARCHITECTURE. NO PART OF THIS WORK MAY BE REPRODUCED WITHOUT THE WRITTEN PERMISSION OF FLEISCHMANGARCIA ARCHITECTURE. ANY REUSE OF THIS DRAWING WITHOUT THE WRITTEN PERMISSION OF FLEISCHMANGARCIA ARCHITECTURE IS STRICTLY PROHIBITED.

FGA PROJECT NUMBER
19039

ISSUE DATE
05-25-20

REVISIONS
 DATE: -
 DATE: -
 DATE: -

SHEET NUMBER
A4.3

05-19-20 J:\Projects\19039\19039_17\FGA\Drawings\17_A4.dwg