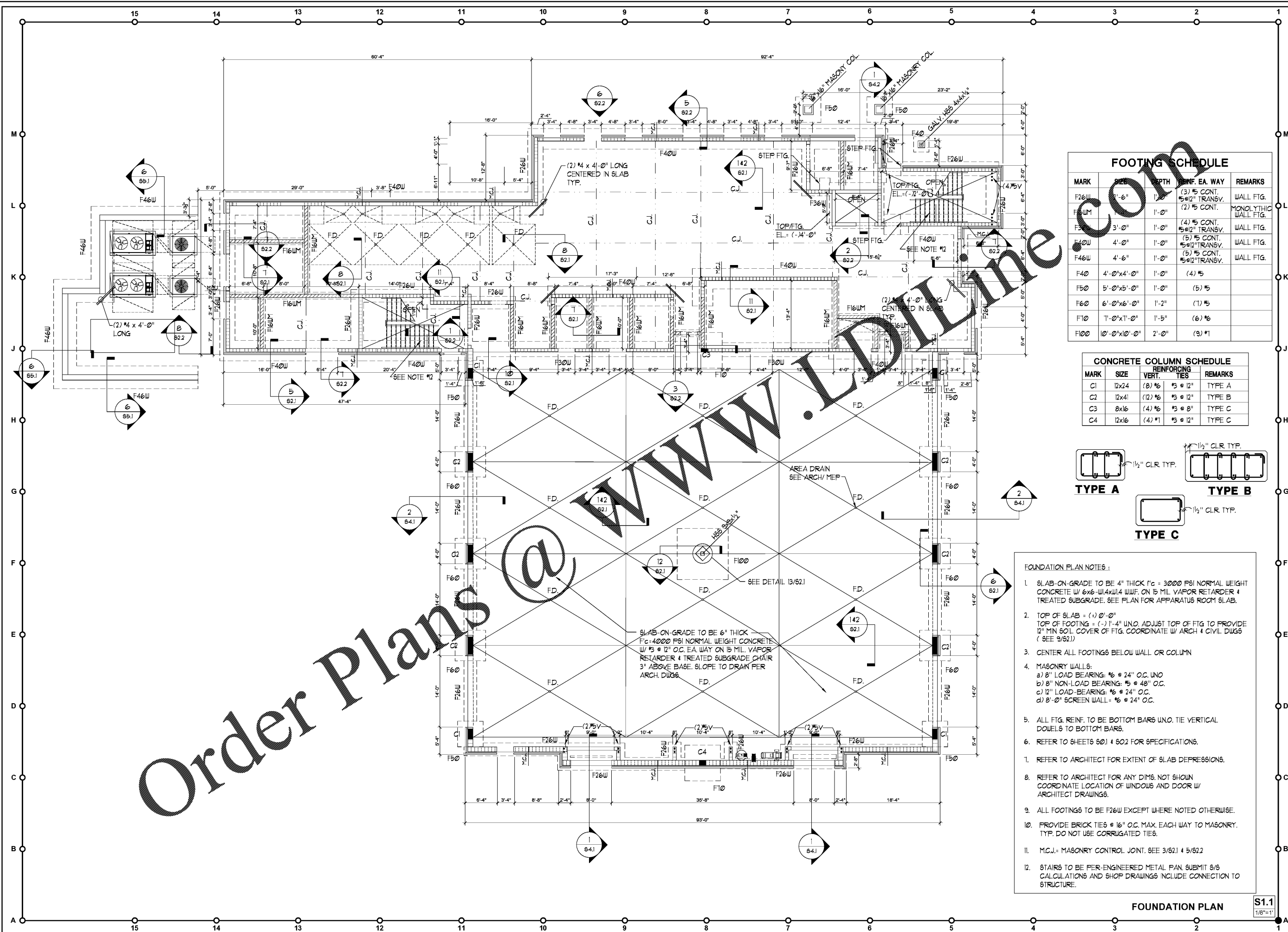
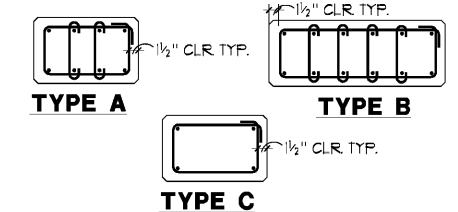


02-25-20 DWG: F:\Projects\19039\FGA\19039-Foundation\Foundation.dwg - Pasco Fire Station - FOUNDATION S1.1.dwg



FOOTING SCHEDULE				
MARK	SIZE	DEPTH	REIN. EA. WAY	REMARKS
F26W	2'-6"	1'-0"	(3) #5 CONT. #5 @ 2" TRANSV.	WALL FTG.
F40W	4'-0"	1'-0"	(2) #5 CONT. (4) #5 CONT. #5 @ 2" TRANSV.	MONOLITHIC WALL FTG.
F60	6'-0" x 6'-0"	1'-0"	(5) #5 CONT. #5 @ 2" TRANSV.	WALL FTG.
F100	10'-0" x 10'-0"	2'-0"	(9) #5 CONT. #5 @ 2" TRANSV.	WALL FTG.

CONCRETE COLUMN SCHEDULE				
MARK	SIZE	VERT. REINFORCING TIES	REMARKS	
C1	12x24	(8) #6 #3 @ 12"	TYPE A	
C2	12x41	(12) #6 #3 @ 12"	TYPE B	
C3	8x16	(4) #6 #3 @ 8"	TYPE C	
C4	12x16	(4) #1 #3 @ 12"	TYPE C	



- FOUNDATION PLAN NOTES:**
- SLAB-ON-GRADE TO BE 4" THICK $f_c = 3000$ PSI NORMAL WEIGHT CONCRETE W/ 6x6-1/4x1/4 W/WF. ON 15 MIL VAPOR RETARDER & TREATED SUBGRADE. SEE PLAN FOR APPARATUS ROOM SLAB.
 - TOP OF SLAB = (+) 0'-0" TOP OF FOOTING = (-) 1'-4" UNO. ADJUST TOP OF FTG TO PROVIDE 12" MIN SOIL COVER OF FTG. COORDINATE W/ ARCH & CIVIL DUGS (SEE 3/521)
 - CENTER ALL FOOTINGS BELOW WALL OR COLUMN
 - MASONRY WALLS:
 - a) 8" LOAD BEARING: #6 @ 24" O.C. UNO
 - b) 8" NON-LOAD BEARING: #5 @ 48" O.C.
 - c) 12" LOAD-BEARING: #6 @ 24" O.C.
 - d) 8'-0" SCREEN WALL = #6 @ 24" O.C.
 - ALL FTG. REIN. TO BE BOTTOM BARS UNO. TIE VERTICAL DOUELS TO BOTTOM BARS.
 - REFER TO SHEETS S01 & S02 FOR SPECIFICATIONS.
 - REFER TO ARCHITECT FOR EXTENT OF SLAB DEPRESSIONS.
 - REFER TO ARCHITECT FOR ANY DIMS. NOT SHOWN COORDINATE LOCATION OF WINDOWS AND DOOR W/ ARCHITECT DRAWINGS.
 - ALL FOOTINGS TO BE F26W EXCEPT WHERE NOTED OTHERWISE.
 - PROVIDE BRICK TIES @ 16" O.C. MAX. EACH WAY TO MASONRY. TYP. DO NOT USE CORRUGATED TIES.
 - M.C.J. = MASONRY CONTROL JOINT. SEE 3/521 & 5/522
 - STAIRS TO BE PER-ENGINEERED METAL PAN. SUBMIT S/S CALCULATIONS AND SHOP DRAWINGS INCLUDE CONNECTION TO STRUCTURE.

5755 RICHMOND DRIVE
CLEARWATER, FL 34617
(727) 536-8772
CHRISTOPHER J. GARCIA, P.E.
PROJECT NO. 19039

FleischmanGarcia
ANALYSIS • DESIGN • CONSTRUCTION SERVICES
3515 W. PARK AVENUE, SUITE 100
TAMPA, FL 33609
PH: (813) 281-8800
FAX: (813) 281-8800
REGISTRATION NUMBER: AA 000223

**Pasco County
Fire & Rescue Station
No. 17**

New Port Richey, Florida

THIS DESIGN AND DRAWING IS THE SOLE PROPERTY OF FLEISCHMAN-GARCIA AND SHALL NOT BE REPRODUCED, COPIED, OR TRANSMITTED IN ANY FORM OR BY ANY MEANS WITHOUT THE WRITTEN PERMISSION OF FLEISCHMAN-GARCIA.

CHECKED BY: J. GARCIA
DATE: 05-25-20
DRAWN BY: J. GARCIA
SCALE: AS SHOWN
RELEVANT BUILDING CODES

FGA PROJECT NUMBER
19039

ISSUE DATE
05-25-20

SHEET NUMBER
S1.1