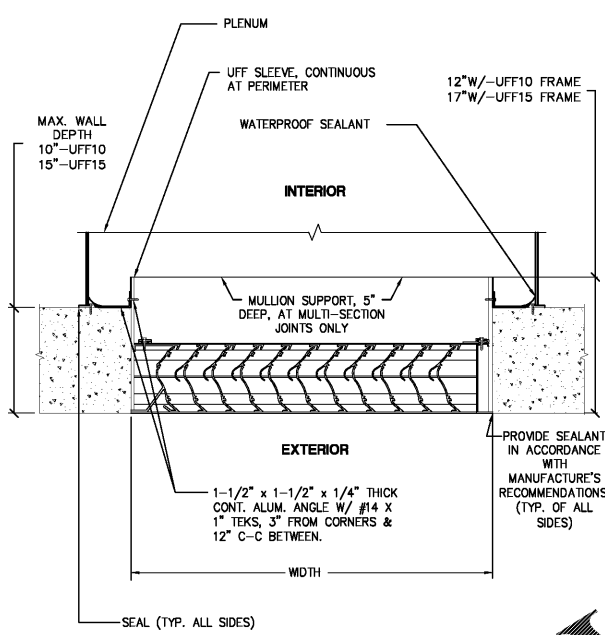


NOTE: PROVIDE ENGRAVED SIGN ON ACCESS DOOR TO READ: "TURN OFF EXHAUST FAN DISCONNECT, BEFORE OPENING ACCESS DOOR."

APPARATUS BAY EXHAUST FAN DETAIL

SCALE: NONE

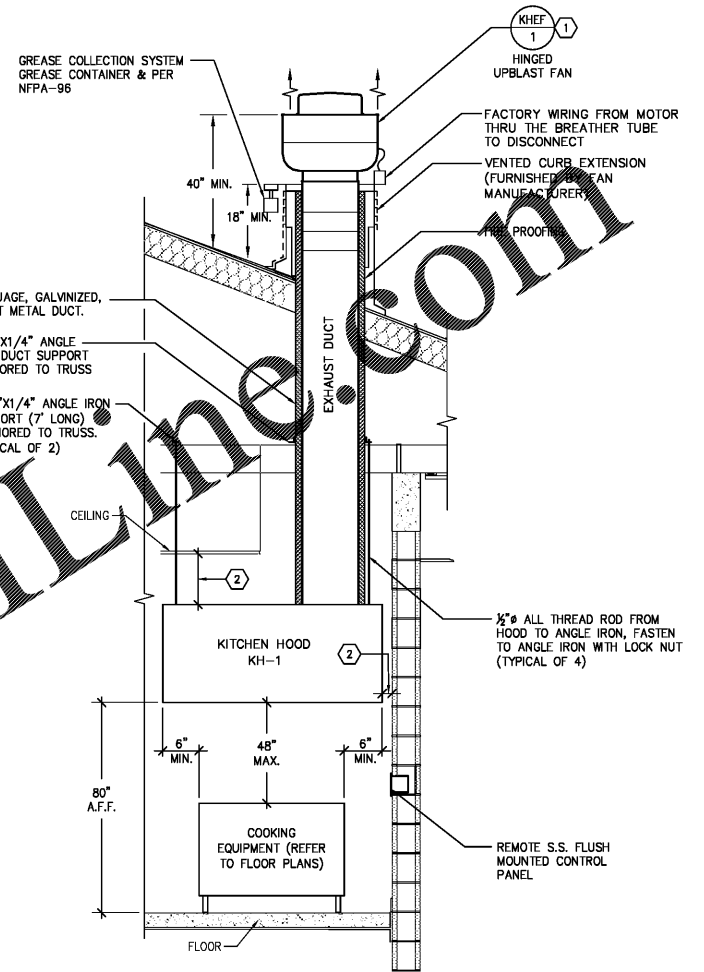


RUSKIN EME6325D LOUVER FRAME INSTALLATION DETAIL

NO SCALE

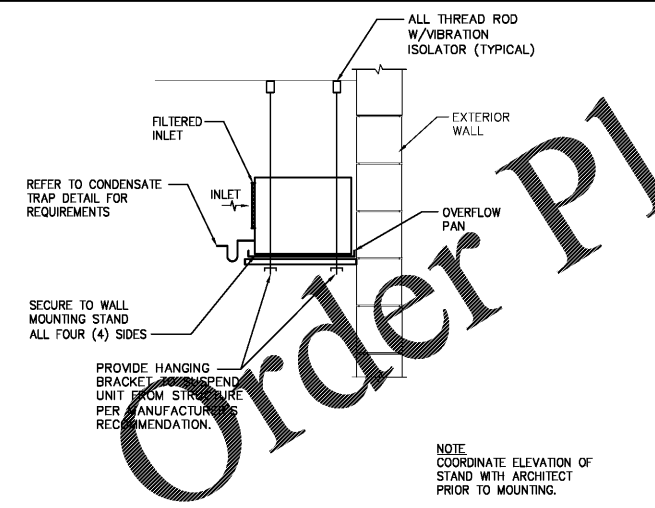
- GENERAL NOTES:**
- COORDINATE EXACT LOCATION OF ANSUL PULL STATION WITH ARCHITECTURAL DRAWINGS.
 - ALL WALL AND CEILING SYSTEMS ADJACENT TO HOOD AND EXHAUST FAN DUCT IS COMPOSED OF NON-COMBUSTIBLE MATERIAL.
 - EXHAUST FAN COMPONENTS SHALL BE SCREWED TOGETHER (NOT RIVETED) FOR EASE OF MOTOR MAINTENANCE.
 - EXPOSED SURFACES CONSTRUCTED OF 18 GAUGE STAINLESS STEEL WITH A #4 FINISH, UNEXPOSED SURFACES ARE 18 GAUGE, CORROSION RESISTANT STEEL.

- KEYED NOTES:**
- PROVIDE GUARD RAILS AND SERVICE PLATFORM IN ACCORDANCE WITH SECTIONS 304.11 AND 306.5.1 OF THE FLORIDA BUILDING CODE 6TH EDITION (2017) MECHANICAL. REFER TO ARCHITECTURAL PLANS FOR MORE INFORMATION.
 - PROVIDE THE FOLLOWING CLEARANCES ON ALL SIDES IN ACCORDANCE WITH SECTION 507.2.6 OF THE FLORIDA BUILDING CODE 6TH EDITION (2017) MECHANICAL: 0" TO NON-COMBUSTIBLES, AND 18" TO COMBUSTIBLES.



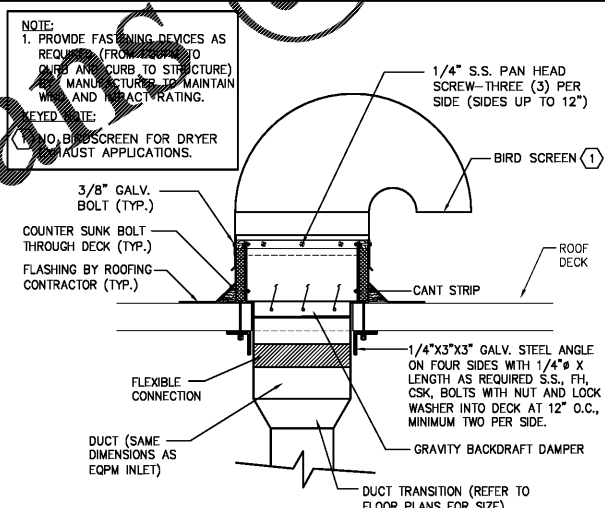
KITCHEN HOOD AND EXHAUST FAN DETAIL

NO SCALE



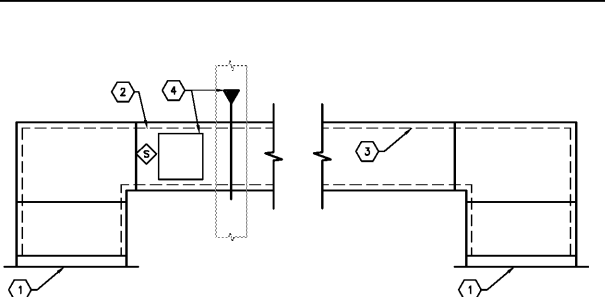
DEHUMIDIFICATION UNIT DETAIL

NO SCALE



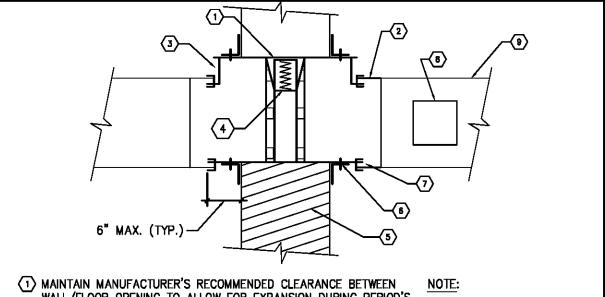
TYPICAL ROOF MOUNTED GOOSENECK DETAIL

NO SCALE



TYPICAL TRANSFER DUCT DETAIL

NO SCALE



FIRE DAMPER DETAIL

NO SCALE

ENGINEERING MATRIX, INC.
CONSULTING ENGINEERS
2880 SCHEERER DRIVE, SUITE 640
ST. PETERSBURG, FLORIDA, 33716
(727) 321-4668 FAX (727) 321-8082 EMAIL: ematrix@matrixinc.com
CERT. OF AUTHORIZATION NO. 4898 ERM JOB NO. 19-0960
© 2019 Engineering Matrix, Inc. DRAWN BY: RCM CHECKED BY: JSW

FleischmanGarcia
ARCHITECTS
3511 15TH AVENUE NORTH, SUITE 300
TAMPA, FLORIDA 33618
PHONE (813) 726-8800
FAC (813) 726-8800
REGISTRATION NUMBER: AA 000237

Pasco County Fire & Rescue Station No. 17
New Port Richey, Florida

THIS DESIGN AND DRAWING IS THE SOLE PROPERTY OF FLEISCHMAN-GARCIA ARCHITECTS. IT IS TO BE USED ONLY FOR THE PROJECT AND SITE SPECIFICALLY IDENTIFIED HEREIN. IT IS NOT TO BE REPRODUCED, COPIED, OR TRANSMITTED IN ANY FORM OR BY ANY MEANS, WITHOUT THE WRITTEN PERMISSION OF FLEISCHMAN-GARCIA ARCHITECTS.

FGA PROJECT NUMBER
19039

ISSUE DATE
05-25-20

REVISIONS
DATE: _____
DATE: _____
DATE: _____

SHEET NUMBER
M3.2

MECHANICAL DETAILS A1

05-27-20 Joshua Wicks, 20191010-0000 FGA CPA Fire Station 17Mechanical M3.2.dwg