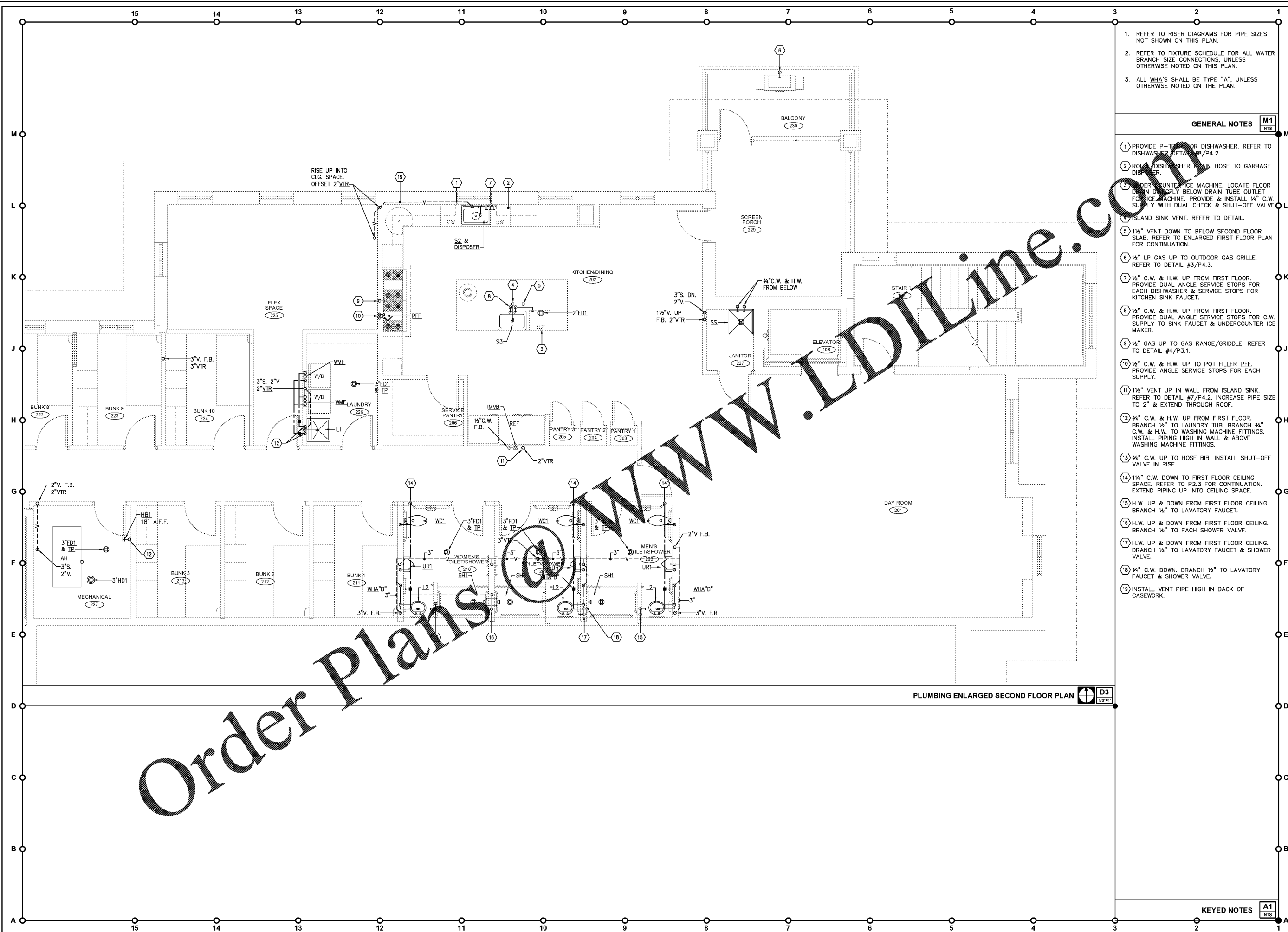


05-25-20 Sheet Dabab\10\dwg\2020\dwg\10_2119-0800 FGA CPA Fire Station 17\piping\19-0800_P2_L_THRU_P2_L_F_P1_ANS.dwg



PLUMBING ENLARGED SECOND FLOOR PLAN

- REFER TO RISER DIAGRAMS FOR PIPE SIZES NOT SHOWN ON THIS PLAN.
- REFER TO FIXTURE SCHEDULE FOR ALL WATER BRANCH SIZE CONNECTIONS, UNLESS OTHERWISE NOTED ON THIS PLAN.
- ALL WHA'S SHALL BE TYPE "A", UNLESS OTHERWISE NOTED ON THE PLAN.

GENERAL NOTES

- PROVIDE P-TUB FOR DISHWASHER. REFER TO DISHWASHER DETAIL #B/P4.2
- ROUND DISHWASHER DRAIN HOSE TO GARBAGE DISPOSER.
- UNDER COUNTER ICE MACHINE. LOCATE FLOOR DRAIN DIRECTLY BELOW DRAIN TUBE OUTLET FOR ICE MACHINE. PROVIDE & INSTALL 1/2" C.W. SUPPLY WITH DUAL CHECK & SHUT-OFF VALVE.
- ISLAND SINK VENT. REFER TO DETAIL.
- 1 1/2" VENT DOWN TO BELOW SECOND FLOOR SLAB. REFER TO ENLARGED FIRST FLOOR PLAN FOR CONTINUATION.
- 1/2" LP GAS UP TO OUTDOOR GAS GRILLE. REFER TO DETAIL #3/P4.3.
- 1/2" C.W. & H.W. UP FROM FIRST FLOOR. PROVIDE DUAL ANGLE SERVICE STOPS FOR EACH DISHWASHER & SERVICE STOPS FOR KITCHEN SINK FAUCET.
- 1/2" C.W. & H.W. UP FROM FIRST FLOOR. PROVIDE DUAL ANGLE SERVICE STOPS FOR C.W. SUPPLY TO SINK FAUCET & UNDERCOUNTER ICE MAKER.
- 1/2" GAS UP TO GAS RANGE/GRIDDLE. REFER TO DETAIL #4/P3.1.
- 1/2" C.W. & H.W. UP TO POT FILLER PFF. PROVIDE ANGLE SERVICE STOPS FOR EACH SUPPLY.
- 1 1/2" VENT UP IN WALL FROM ISLAND SINK. REFER TO DETAIL #7/P4.2. INCREASE PIPE SIZE TO 2" & EXTEND THROUGH ROOF.
- 3/4" C.W. & H.W. UP FROM FIRST FLOOR. BRANCH 1/2" TO LAUNDRY TUB. BRANCH 3/4" C.W. & H.W. TO WASHING MACHINE FITTINGS. INSTALL PIPING HIGH IN WALL & ABOVE WASHING MACHINE FITTINGS.
- 3/4" C.W. UP TO HOSE BIB. INSTALL SHUT-OFF VALVE IN RISE.
- 1 1/2" C.W. DOWN TO FIRST FLOOR CEILING SPACE. REFER TO P2.3 FOR CONTINUATION. EXTEND PIPING UP INTO CEILING SPACE.
- H.W. UP & DOWN FROM FIRST FLOOR CEILING. BRANCH 1/2" TO LAVATORY FAUCET.
- H.W. UP & DOWN FROM FIRST FLOOR CEILING. BRANCH 1/2" TO EACH SHOWER VALVE.
- H.W. UP & DOWN FROM FIRST FLOOR CEILING. BRANCH 1/2" TO LAVATORY FAUCET & SHOWER VALVE.
- 3/4" C.W. DOWN. BRANCH 1/2" TO LAVATORY FAUCET & SHOWER VALVE.
- INSTALL VENT PIPE HIGH IN BACK OF CASEWORK.

KEYED NOTES

ENGINEERING MATRIX, INC.
 CONSULTING ENGINEERS
 2800 SCHEERER DRIVE, SUITE 640
 ST. PETERSBURG, FLORIDA 33716
 (727) 372-4666 FAX (727) 372-3062 EMAIL: em@matrixeng.com
 CERT. OF AUTHORIZATION NO. 4898 P.E. JOB NO. 19-0800
 © 2019 Engineering Matrix, Inc. DRAWN BY: JSW CHECKED BY: JSW

FleischmanGarcia
 ARCHITECTS
 2510 W. PARK AVENUE, SUITE 300
 TAMPA, FLORIDA 33606
 (813) 772-1400
 (813) 772-3800
 (813) 772-3900
 REGISTRATION NUMBER: AA 000272

**Pasco County
 Fire & Rescue Station
 No. 17**
 New Port Richey, Florida

THIS DESIGN AND DRAWING IS THE SOLE PROPERTY OF PASCO COUNTY AND SHALL NOT BE REPRODUCED, COPIED, OR TRANSMITTED IN ANY FORM OR BY ANY MEANS WITHOUT THE WRITTEN PERMISSION OF PASCO COUNTY.

FGA PROJECT NUMBER
19039

ISSUE DATE
05-25-20

REVISIONS
△ DATE: _____
△ DATE: _____
△ DATE: _____

SHEET NUMBER
P2.4