

1. DASHED OUTLINE DEFINES APPROXIMATE COVERAGE AREA.
2. SEE SPECIFICATIONS FOR ADDITIONAL REQUIREMENTS.
3. REFER TO CIVIL DRAWINGS FOR MAIN FIRE LINE LOCATION AND CONNECTION TO CITY MAIN.
4. DOUBLE DETECTOR CHECK VALVE ASSEMBLY REQUIRED AT FIRE MAIN CONNECTION. REFER TO CIVIL DRAWINGS FOR PROPOSED LOCATION.
5. VERIFY EXACT REQUIREMENTS WITH THE LOCAL AUTHORITY HAVING JURISDICTION. COORDINATE EXACT LOCATION OF HYDRANT, FIRE MAIN AND FDC WITH CIVIL DRAWINGS PRIOR TO BIDDING.
6. SEE SPECIFICATIONS FOR ADDITIONAL REQUIREMENTS.
7. THIS CONTRACTOR'S SHOP DRAWINGS SHALL BE COORDINATED WITH CEILINGS, AIR DEVICES, LIGHTING, STRUCTURAL MEMBERS, ETC. THE CONTRACTOR SHALL STRIVE TO ALIGN THE SPRINKLER HEADS WITHIN THE CENTER OF EACH CEILING WHERE POSSIBLE WHILE MAINTAINING SPACING REQUIREMENTS.

- ① APPROXIMATE LOCATION AND ROUTING OF FIRE LINE. REFER TO CIVIL DRAWING FOR EXACT LOCATION.
- ② MAIN FIRE LINE CONNECTION TO BUILDING RISER (8"Ø), LOCATED IN OUTDOOR STORAGE ROOM 149. REFER TO DETAIL ON THIS SHEET FOR MORE INFORMATION.
- ③ APPROXIMATE CONNECTION LOCATION TO CITY MAIN. REFER TO CIVIL DRAWINGS FOR EXACT LOCATION.
- ④ BACKFLOW PREVENTER FOR FIRE SPRINKLER SYSTEM. REFER TO CIVIL DRAWINGS FOR ADDITIONAL INFORMATION.
- ⑤ 4"Ø PIPING FOR FDC CONNECTION.
- ⑥ DASHED LINE INDICATES AREA TO BE SUPPLIED WITH AUTOMATIC SPRINKLER PROTECTION.

HYDRANT FLOW DATA

1. CONTRACTOR SHALL INCLUDE IN THEIR SCOPE OF WORK A HYDRANT FLOW TEST, AS PERFORMED BY THE RESPONSIBLE AGENCY. THE FLOW TEST SHALL BE CONDUCTED NO MORE THAN 12 MONTHS PRIOR TO THE WORKING PLAN SUBMITTAL.

HYDRAULIC DESIGN INFORMATION

NAME : FIRE & RESCUE STATION NO. 17
 OWNER : PASCO COUNTY
 LOCATION : XXXXX
 CONSTRUCTION : ROOF.....NON-COMBUSTIBLE
 FRAMING.....COMBUSTIBLE
 WALLS.....NON-COMBUSTIBLE

SYSTEM DESIGN

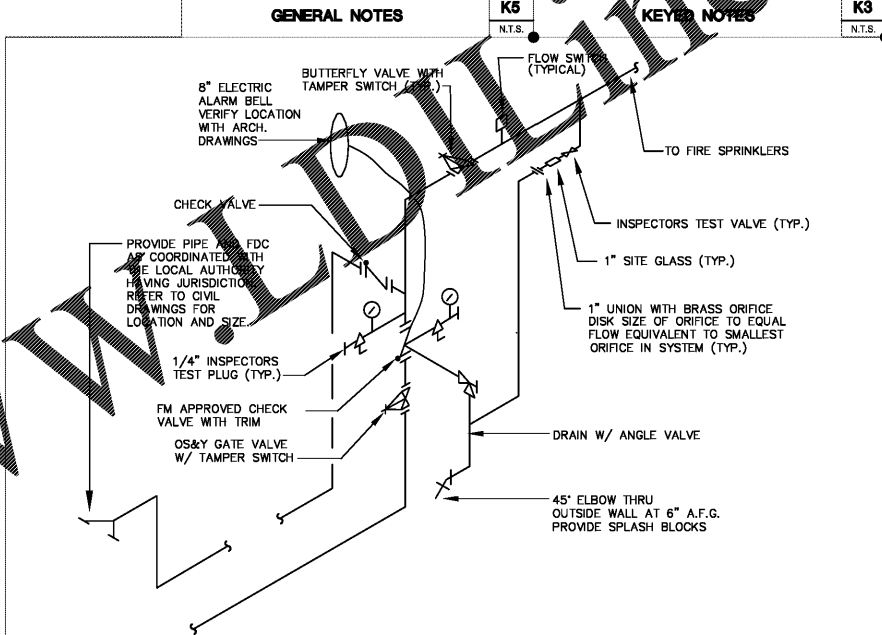
1. ENTIRE BUILDING SHALL BE PROTECTED WITH AUTOMATIC SPRINKLER SYSTEM PER NFPA 13. ALL GENERAL BUILDING AREAS SHALL HAVE COVERAGE PER NFPA-13 - LIGHT HAZARD. STORAGE AREAS, MECHANICAL ROOMS AND ELECTRICAL ROOMS SHALL HAVE COVERAGE PER NFPA-13 - ORDINARY HAZARD. SEE SPECIFICATIONS FOR ADDITIONAL REQUIREMENTS.
2. FIRE SPRINKLER CONTRACTOR SHALL REVIEW THE INFORMATION CONTAINED HEREIN AND SHALL PREPARE COMPLETE FIRE SYSTEM INSTALLATION SHOP DRAWINGS COINCIDING WITH HYDRAULIC CALCULATIONS SEALED BY A FLORIDA REGISTERED PROFESSIONAL ENGINEER EXPERIENCED IN THE FIELD AND SHALL CARRY A MINIMUM OF \$500,000 WORTH OF PROFESSIONAL LIABILITY ERRORS AND OMISSIONS INSURANCE APPLICABLE FOR THIS PROJECT. IF REQUIRED, A WAIVER SHALL BE PROVIDED TO SPRINKLER CONTRACTOR. THE DESIGN AND DETAILS SHALL CONFORM TO NFPA 13 AND NFPA 14, AND ALL LOCAL CODES AND REGULATIONS, PURSUANT TO FS 471.003 (2) AND RULES 61615-30 AND 32. THE FIRE PROTECTION CONTRACTOR SHALL BE REQUIRED TO PROVIDE DETAILED FIRE PROTECTION CONSTRUCTION DRAWINGS TO BE SIGNED AND SEALED BY A REGISTERED FIRE PROTECTION SYSTEM DESIGN ENGINEER ACTING AS THE DELEGATED ENGINEER TO THE PRIME ENGINEER AS PART OF THIS SCOPE. THE CONTRACTOR SHALL SUBMIT THE NECESSARY NUMBER OF COPIES OF SIGNED AND SEALED DRAWINGS TO AUTHORITIES HAVING JURISDICTION FOR REVIEW, APPROVAL, AND ISSUANCE OF PERMIT. COPIES OF THE SIGNED AND SEALED DRAWINGS SHALL BE SUBMITTED TO THIS OFFICE FOR REVIEW AND COMMENT AFTER APPROVAL FROM AUTHORITY HAVING JURISDICTION.
3. THIS CONTRACTOR'S SHOP DRAWINGS SHALL BE COORDINATED WITH CEILINGS, AIR DEVICES, LIGHTING, STRUCTURAL MEMBERS, ETC. THE CONTRACTOR SHALL STRIVE TO ALIGN THE SPRINKLER HEADS WITHIN THE CENTER OF EACH CEILING WHERE POSSIBLE WHILE MAINTAINING SPACING REQUIREMENTS.
4. A SINGLE MANUAL, CLASS I, WET PIPE STANDPIPE IN THE FRONT STAIRWELL, EXTENDING FROM THE GROUND FLOOR TO THE EQUIPMENT PENTHOUSE, COMPLYING WITH THE REQUIREMENTS OF FLORIDA BUILDING CODE SECTION 905 STANDPIPE SYSTEMS, WILL BE REQUIRED.
5. THE EXTERIOR BALCONIES WILL BE REQUIRED TO BE PROTECTED BY THE FIRE SPRINKLER SYSTEM. PENDENT SPRINKLER WILL BE REQUIRED TO PROVIDE PROTECTION BENEATH EXTERIOR ROOFS AND CANOPIES EXCEEDING 4 FEET IN LENGTH. BALCONIES AND DECKS PROJECTING FROM THE BUILDING SHALL BE CONSIDERED EXTERIOR ROOFS AND CANOPIES.
6. GALVANIZED STEEL PIPING WILL BE REQUIRED TO BE USED IN AREAS OUTSIDE THE BUILDING CONDITIONED ENVELOPE. THIS INCLUDES AREAS SUCH AS THE OPEN AIR GARAGE ON THE GROUND LEVEL AND EXTERIOR ROOFS AND CANOPIES.

GENERAL NOTES

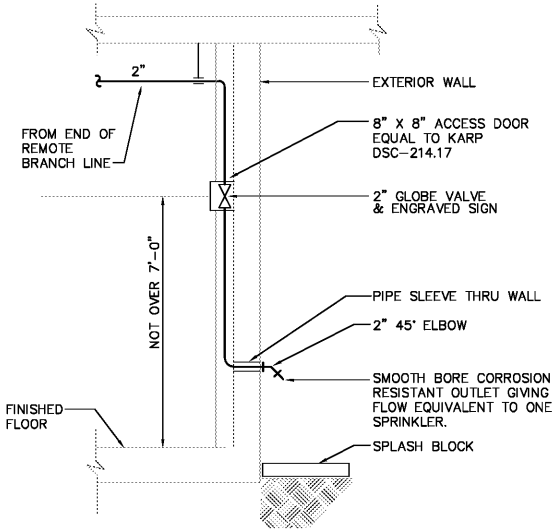
K5
N.T.S.

KEYED NOTES

K3
N.T.S.



FIRE SPRINKLER RISER



INSPECTORS TEST STATION

Order Plans @ www.wldline.com

SITE PLAN - FIRE PROTECTION

AB
1"=20'

FIRE PROTECTION DETAILS

A3
N.T.S.

FIRE PROTECTION NOTES

A1
N.T.S.

ENGINEERING MATRIX, INC.
 CONSULTING ENGINEERS
 2880 SCHEERER DRIVE, SUITE 640
 ST. PETERSBURG, FLORIDA, 33716
 (727) 321-4668 FAX (727) 321-8082 EMAIL: enr@matrixinc.com
 CERT. OF AUTHORIZATION NO. 4288 B.M. JOB NO. 19-0960
 © 2019 Engineering Matrix, Inc. DRAWN BY: JFW CHECKED BY: JFW

FleischmanGarcia
 REGISTERED PROFESSIONAL ENGINEERS
 2511 WINDY PARK AVENUE, SUITE 300
 SEASIDE, FLORIDA 32081
 PHONE (904) 342-8991
 FAX (904) 342-8992
 REGISTRATION NUMBER: AA 000227

**Pasco County
 Fire & Rescue Station
 No. 17**
 New Port Richey, Florida

THIS DESIGN AND DRAWING IS THE SOLE PROPERTY OF FLEISCHMAN-GARCIA AND SHALL NOT BE REPRODUCED OR TRANSMITTED IN ANY FORM OR BY ANY MEANS, ELECTRONIC OR MECHANICAL, INCLUDING PHOTOCOPYING, RECORDING, OR BY ANY INFORMATION STORAGE AND RETRIEVAL SYSTEM, WITHOUT THE WRITTEN PERMISSION OF FLEISCHMAN-GARCIA.

FGA PROJECT NUMBER
19039

ISSUE DATE
05-25-20

REVISIONS
DATE: _____
DATE: _____
DATE: _____

SHEET NUMBER
FP1.1