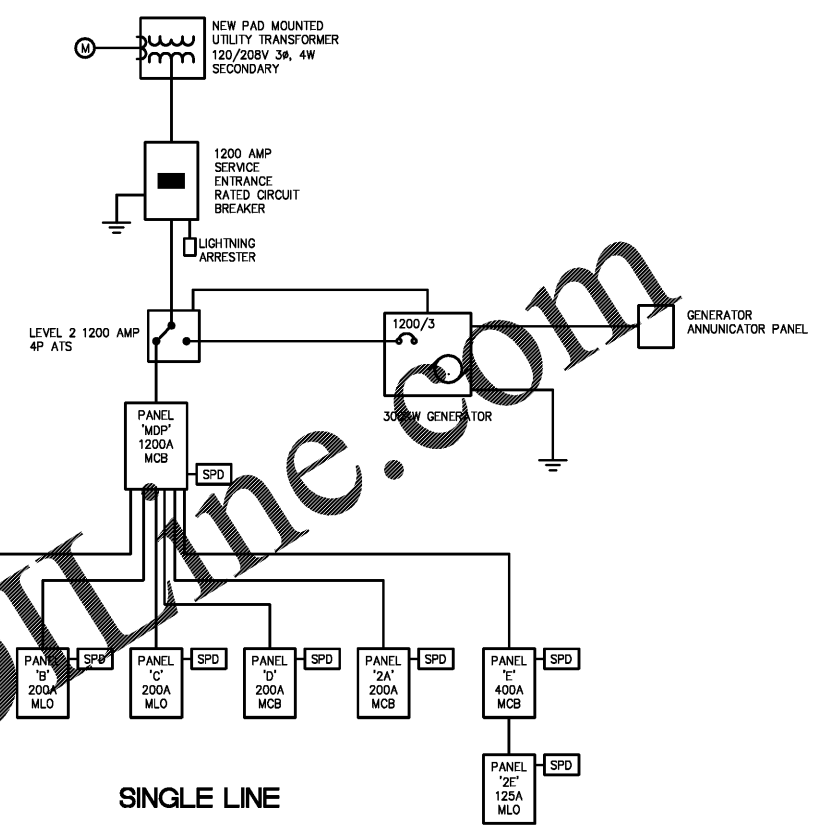


208V FEEDERS AND PANELS

PANEL NAME	SOURCE	OCF	DESIGN LOAD KVA	# OF SETS	WIRE SIZE	NEUTRAL/GROUNDING	CONDUIT SIZE PER SET	VOLTAGE DROP %	AVAILABLE FAULT KVAIC
MAIN CB	UTILITY	1200/3	356.8	4	350 KCMIL	4 WIRES PER SET	3"	0.32%	55.37
ATS	MAIN CB	1200/3	356.8	4	350 KCMIL	4 WIRES PER SET, 1-3/0 CU E.G.	3"	0.02%	54.55
PANEL MDP	ATS	1200/3	356.8	4	350 KCMIL	4 WIRES PER SET, 1-3/0 CU E.G.	3"	0.02%	53.75
PANEL A	PANEL MDP	200/3	37.9	1	3/0	4 WIRES PER SET, 1-#6 CU E.G.	2"	0.07%	40.68
PANEL B	PANEL MDP	200/3	48.5	1	3/0	4 WIRES PER SET, 1-#6 CU E.G.	2"	0.09%	40.68
PANEL C	PANEL MDP	200/3	45.2	1	3/0	4 WIRES PER SET, 1-#6 CU E.G.	2"	0.08%	40.68
PANEL D	PANEL MDP	200/3	37.2	1	3/0	4 WIRES PER SET, 1-#6 CU E.G.	2"	0.07%	40.68
PANEL 2A	PANEL MDP	200/3	54.8	1	3/0	4 WIRES PER SET, 1-#6 CU E.G.	2"	0.10%	40.68
PANEL E	PANEL MDP	400/3	75.3	2	3/0	4 WIRES PER SET, 1-#3 CU E.G.	2"	0.69%	20.62
PANEL 2E	PANEL E	125/3	35.6	1	#1	4 WIRES PER SET, 1-#6 CU E.G.	1 1/2"	0.07%	18.51

NOTE: ALL CONDUCTORS SHALL BE CU UNLESS OTHERWISE NOTED HERE OR ON RISER DIAGRAM



REMARKS	POLES AND	LOAD SERVING						LOAD SERVING						REMARKS	3 PHASE INFO
		A		B		C		A		B		C			
		AMPS	POWER	AMPS	POWER	AMPS	POWER	AMPS	POWER	AMPS	POWER	AMPS	POWER		
X 3PHASE INFO	1	200/3													
HP	1	200/3	12817		12817										
HP	3	200/3													
HP	7	200/3	18188		18188										
HP	11	200/3													
X 3PHASE INFO	13	200/3													
HP	15	200/3	15051		15051										
HP	17	200/3													
X 3PHASE INFO	19	200/3													
HP	21	200/3	12391		12391										
HP	23	200/3													
X 3PHASE INFO	25	200/3													
HP	27	200/3	18256		18256										
HP	29	200/3													
X 3PHASE INFO	31	400/3													
HP	33	400/3	25086		25086										
HP	35	400/3													
HP	37	400/3													
HP	39	400/3													
HP	41	400/3													
TOTAL			89569		89569			31361		31361			26361		

REMARKS	POLES AND	LOAD SERVING						LOAD SERVING						REMARKS	3 PHASE INFO
		A		B		C		A		B		C			
		AMPS	POWER	AMPS	POWER	AMPS	POWER	AMPS	POWER	AMPS	POWER	AMPS	POWER		
RECEPT 5	1	20/1	900												
RECEPT 3	3	20/1													
RECEPT 3	5	20/1													
RECEPT 5	7	20/1	800												
EW	9	20/1+													
MENDING	11	20/1													
TRUCKS	13	20/1	900												
TRUCKS	15	20/1													
RECEPT 4	17	20/1													
RECEPT 1	19	20/1	180												
RECEPT 3	21	20/1													
WASHER	23	20/1													
DRYER	25	30/2	1750												
DRYER	27	30/2													
WASHER	29	20/1													
DRYER	31	30/2	1750												
SPARE	33	20/1													
SPARE	35	20/1													
SPARE	37	20/1													
SPARE	39	20/1													
SPARE	41	20/1													
TOTAL			6380		6032			4020		8995		7180	245		

WIRE SIZE REQUIRED FOR BRANCH CIRCUITS AT LESS THAN 3% VOLTAGE DROP

DESIGN LOAD	120V						208V 1 PHASE						208V 3 PHASE												
	1 FT TO 50 FT	51 FT TO 75 FT	76 FT TO 100 FT	101 FT TO 125 FT	126 FT TO 150 FT	151 FT TO 200 FT	20A	30A	40A	50A	60A	70A	80A	90A	100A	20A	30A	40A	50A	60A	70A	80A	90A	100A	
15A	#12	#10	#10	#8	#8	#6	#12	#12	#12	#12	#10	#10	#8	#8	#6	#12	#12	#12	#12	#10	#10	#8	#8	#6	#6
20A	#12	#10	#8	#8	#6	#6	#12	#12	#12	#12	#10	#10	#8	#8	#6	#12	#12	#12	#12	#10	#10	#8	#8	#6	#6
30A	#10	#8	#8	#6	#6	#4	#10	#10	#10	#10	#8	#8	#6	#6	#4	#10	#10	#10	#10	#8	#8	#6	#6	#4	#4
40A	#8	#6	#6	#6	#4	#4	#8	#8	#8	#8	#6	#6	#4	#4	#3	#8	#8	#8	#8	#6	#6	#4	#4	#3	#3
50A	#6	#6	#4	#4	#3	#2	#6	#6	#6	#6	#4	#4	#3	#2	#2	#6	#6	#6	#6	#4	#4	#3	#3	#2	#2
60A	#6	#6	#4	#4	#3	#2	#6	#6	#6	#6	#4	#4	#3	#2	#2	#6	#6	#6	#6	#4	#4	#3	#3	#2	#2
70A	#4	#4	#4	#4	#3	#2	#4	#4	#4	#4	#3	#3	#2	#2	#2	#4	#4	#4	#4	#3	#3	#2	#2	#2	#2
80A	#4	#4	#4	#4	#3	#2	#4	#4	#4	#4	#3	#3	#2	#2	#2	#4	#4	#4	#4	#3	#3	#2	#2	#2	#2
90A	#3	#3	#3	#3	#3	#2	#3	#3	#3	#3	#2	#2	#2	#2	#2	#3	#3	#3	#3	#2	#2	#2	#2	#2	#2
100A	#3	#3	#3	#3	#3	#2	#3	#3	#3	#3	#2	#2	#2	#2	#2	#3	#3	#3	#3	#2	#2	#2	#2	#2	#2

GENERATOR SCHEDULE

MARK		
MANUFACTURER		KOHLER
MODEL NUMBER		300R02ZF
CAPACITY	KVA	300
PEAK STARTING KVA @ 35% V. DIP	KVA	980
ENGINE MODEL	JOHN DEERE	6080FGB6
ALTERNATOR	KOHLER	4UA13
FUEL		DIESEL
ELECTRICAL CHARACTERISTICS	V/PH	208/3/60
ENGINE SPEED	RPM	1800
FUEL CONSUMPTION @50%	GPH	13.1
SERVICE TYPE		STANDBY
CLASS		72
TYPE		10
LEVEL		1
SUB-BASE TANK (72-HR RUNTIME @ 50% LOAD)	GALLONS (MINIMUM)	1074

- NOTES:
1. PROVIDE WEATHERPROOF SOUND ATTENUATED ALUMINUM ENCLOSURE WITH MIN. 150 MPH WIND RATING.
 2. PROVIDE BLOCK HEATER AND BATTERY CHARGER.
 3. PROVIDE 1200 AMP SHUNT TRIP CIRCUIT BREAKER.
 4. PROVIDE STATE CERTIFIED SUB-BASE FUEL TANK AND VIBRATION ISOLATORS.
 5. PROVIDE REMOTE ANNUNCIATOR.
 6. PROVIDE REMOTE EPO SWITCH.
 7. PROVIDE UNIT MOUNTED CONTROLLER.
 8. PROVIDE MATCHING AUTOMATIC TRANSFER SWITCH.

ENGINEERING MATRIX, INC.
CONSULTING ENGINEERS
2880 SCHEERER DRIVE, SUITE 640
ST. PETERSBURG, FLORIDA, 33716
(727) 372-4668 FAX (727) 372-4666 EMAIL: emi@matrixinc.com
CERT. OF AUTHORIZATION NO. 4898 EMI JOB NO. 19-0960
© 2019 Engineering Matrix, Inc. DRAWN BY: JTH CHECKED BY: JSW

FleischmanGarcia
REGISTERED PROFESSIONAL ENGINEERS
3511 15TH AVENUE NORTH, SUITE 300
TAMPA, FLORIDA 33618
PHONE (813) 972-8800
FAX (813) 972-8800
REGISTRATION NUMBER: AA 000227

Pasco County Fire & Rescue Station No. 17
New Port Richey, Florida

FGA PROJECT NUMBER
19039

ISSUE DATE
05-25-20

REVISIONS
DATE: _____
DATE: _____
DATE: _____

SHEET NUMBER
E6.1