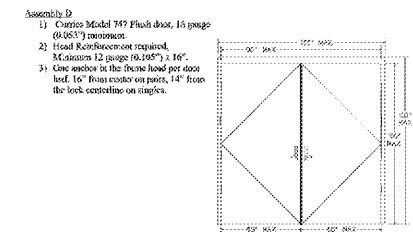
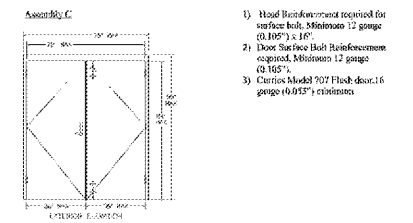


ZHA.A.12 Windform-rated Assemblies

Assembly No. 12

Table with 2 columns: Standard, Description. Lists various door models and their specifications.

- 1. Head Reinforcement required for surface lock. Minimum 12 gauge (0.105") x 16".
2. Door Surface Lock Reinforcement required. Minimum 12 gauge (0.105").
3. Curries Model 707 Flash door, 16 gauge (0.053") minimum.

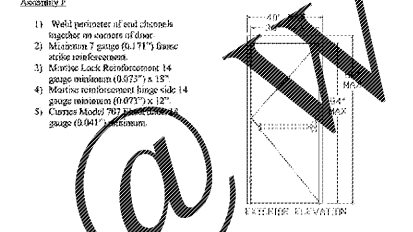
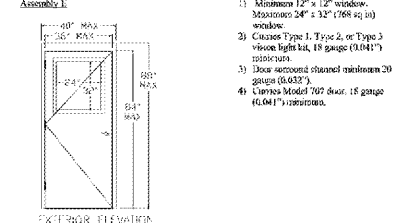


R1604451 10/29/2012 3 of 5 For use with FL8394

CURRIES Product Summary

Table with 2 columns: Assembly Ref, Description. Lists various door models and their specifications.

- 1. Minimum 12" x 12" window. Maximum 24" x 32" (762 x 813) window.
2. Curries Type 1, Type 2, or Type 3 vision light kit, 18 gauge (0.041") minimum.
3. Door reinforced channel minimum 20 gauge (0.032").
4. Curries Model 707 door, 16 gauge (0.053") minimum.

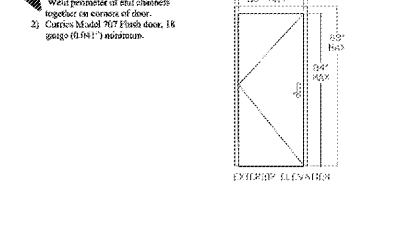
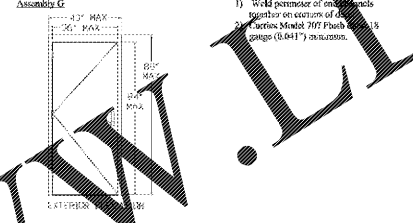


R1604451 10/29/2012 4 of 5 For use with FL8394

CURRIES Product Summary

Table with 2 columns: Assembly Ref, Description. Lists various door models and their specifications.

- 1. Curries Model 707 Flash door, 16 gauge (0.053") minimum.
2. Curries Model 707 Flash door, 16 gauge (0.053") minimum.
3. Curries Model 707 Flash door, 16 gauge (0.053") minimum.



R1604451 10/29/2012 5 of 5 For use with FL8394

CURRIES Installation Instructions

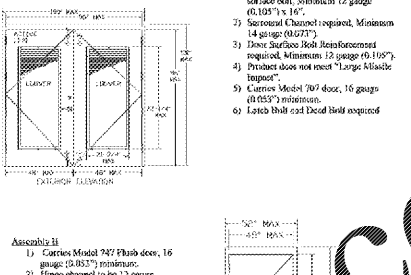
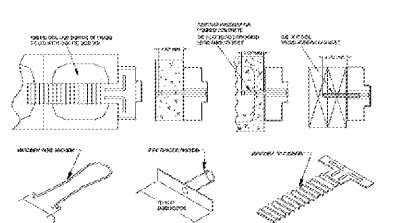
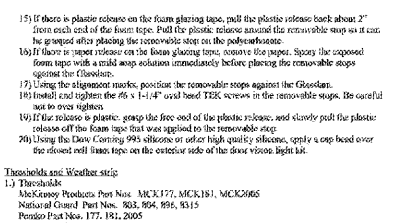


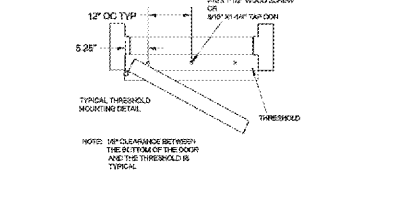
Table with 4 columns: CURRIES, ANCHORS, MAX. EXPANSION, MAX. SPACING. Lists specifications for different door models.



R160446 10/29/2012 1 of 5 For use with FL8394



R160446 10/29/2012 2 of 5 For use with FL8394



R160446 10/29/2012 3 of 5 For use with FL8394

R160446 10/29/2012 4 of 5 For use with FL8394

R160446 10/29/2012 5 of 5 For use with FL8394

Order Plans @ WWW.LDILine.com

FleischmanGarcia logo and contact information including address, phone, and website.

Pasco County Fire & Rescue Station No. 17 New Port Richey, Florida

THIS DESIGN AND DRAWING IS THE SOLE PROPERTY OF FLEISCHMAN-GARCIA AND SHALL NOT BE REPRODUCED OR TRANSMITTED IN ANY FORM OR BY ANY MEANS WITHOUT THE WRITTEN PERMISSION OF FLEISCHMAN-GARCIA.

FGA PROJECT NUMBER 19039

ISSUE DATE 05-25-20

SHEET NUMBER PA-4